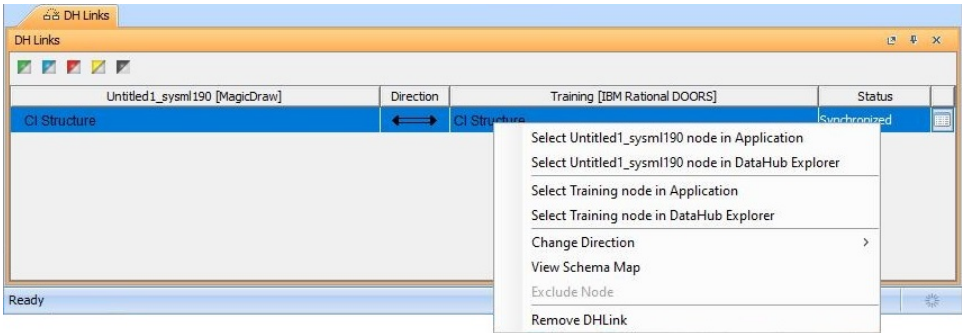


# Working with the DH Links panel

The **Copy Data with Sync** operation mode creates **DHLink**. A DHLink provides a mechanism for synchronization by marking any nodes that have been edited, deleted, moved, or added as new nodes after copying operation. You can view DHLinks from the **DH Links** panel.

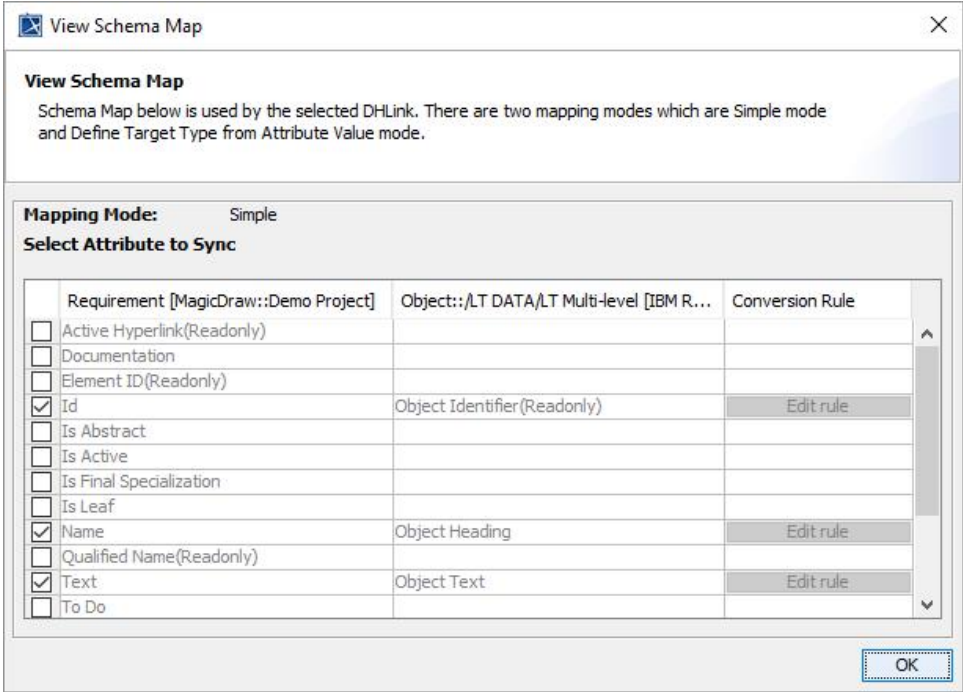
To open the **DH Links** panel

1. From the main menu, click **Tools > DataHub > DHLink Panel**. The **DH Links** panel opens.



2. Right-click a node in the **DH Links** panel and select one of the commands explained in the following table

Command	Function
Select <i>MagicDraw project name</i> node in Application	Selects the element in the MagicDraw Containment tree.
Select <i>MagicDraw project name</i> node in DataHub Explorer	Selects the MagicDraw node in <b>DataHub/Alias Explorer</b> .
Select <i>Data Source name</i> node in Application	Selects the node in the original application, e.g., the node originally from DOORS will be opened in the DOORS client application.
Select <i>Data Source name</i> node in DataHub Explorer	Selects the node from other Data Sources, e.g., DOORS, in <b>DataHub/Alias Explorer</b> .
Change Direction (only for root nodes)	Changes the current direction of synchronization: <b>Two-way Sync</b> , <b>Sync from MagicDraw</b> , and <b>Sync to MagicDraw</b> .

View Schema Map	<p>Opens the <a href="#">View Schema Map</a> dialog.</p>  <p>The View Schema Map dialog.</p>
Exclude Node (not for root nodes)	Skips the synchronization of the selected node and its child nodes.
Include Node	Includes the selected node and its child nodes for the synchronization.
Update Pending DHLINK (for Pending Update items)	Synchronizes the node by updating the pending DHLINK.
Discard Update (for Pending Delete items)	Synchronizes the node by discarding the DHLINK.
Remove DHLINK	Removes the selected DHLINK.