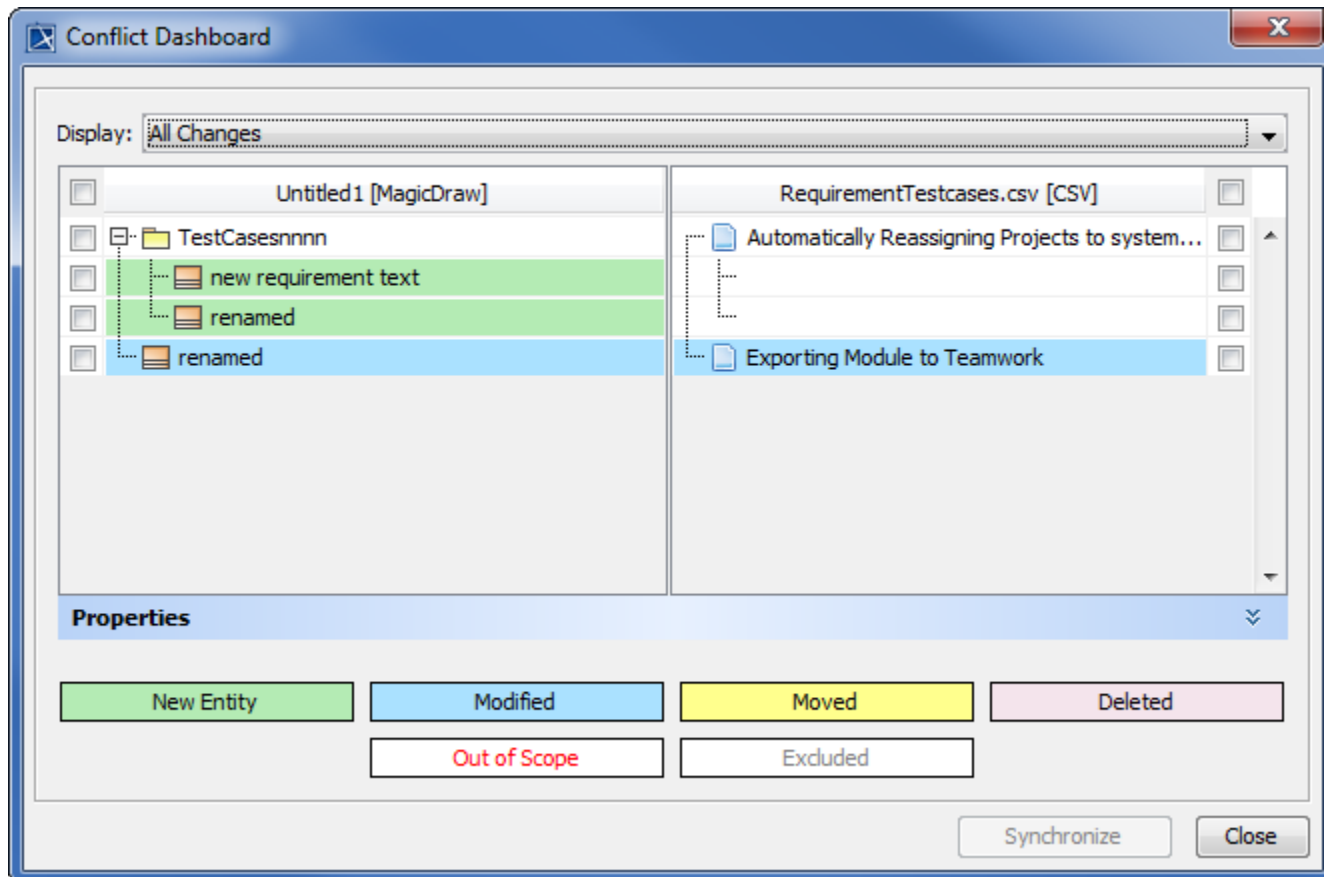


# Conflict Dashboard and its components

When you **Copy Data with Sync** from DOORS, DOORS Next Generation, HP Application Lifecycle projects, or CSV Data Sources, DataHub keeps track of the changes of both source and target nodes. When a node is changed, moved, or deleted on the source or target side, you can perform data synchronization using the **Conflict Dashboard**.

To access the **Conflict Dashboard**

1. [Copy Data with Sync](#), then edit, move, or delete some of these nodes.
2. In **DataHub Explorer**, right-click a node and select **Check DHLink Changes** or **Check DHLink Changes Recursively**. The **Conflict Dashboard** dialog opens.



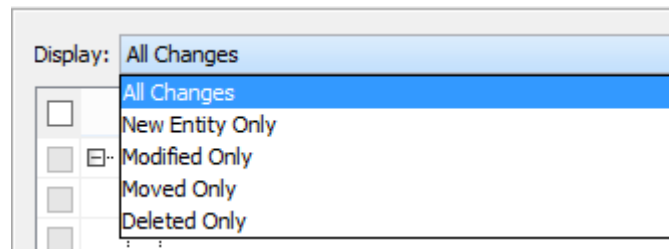
The **Conflict Dashboard** is comprised of the following components

- Source and Target data trees
- **Display** drop-down list
- **Properties** panel
- Node changes in colors
- Synchronize and close buttons

The **Display** drop-down list, **Properties** panel, and node changes in colors are explained below.

## Display drop-down list

The **Display** drop-down list allows you to filter the pending synchronizations according to type of modifications.



The Display drop-down list in the Conflict Dashboard.

## Properties panel

The Conflict Dashboard **Properties** panel shows the properties and attributes of the source and target nodes.

Properties			
<div> <div> <div></div> <div></div> <div></div> <div></div> <div></div> </div> <div> <div></div> <div></div> <div></div> <div></div> <div></div> </div> </div>		<div> <div> <div></div> <div></div> <div></div> <div></div> <div></div> </div> <div> <div></div> <div></div> <div></div> <div></div> <div></div> </div> </div>	
<div> <div>TARGET_PATH_NAME</div> <div> <div>DRIVER</div> <div>MagicDraw</div> </div> <div> <div>Data Source</div> <div>testmar 17</div> </div> <div> <div>PARENT_PATH</div> <div>Data::Requirements:::&lt;&gt;:::&lt;&gt;</div> </div> </div>		<div> <div>TARGET_PATH_NAME</div> <div> <div>DRIVER</div> <div>IBM Rational DOORS</div> </div> <div> <div>Data Source</div> <div>DOORS Database</div> </div> <div> <div>PARENT_PATH</div> <div>DOORS Database::test-dhub::Re...</div> </div> </div>	
<div> <div>Class</div> <div> <div>To Do</div> <div></div> </div> <div> <div>Name</div> <div></div> </div> <div> <div>Documentation</div> <div></div> </div> <div> <div>Qualified Name</div> <div>Requirements::::</div> </div> <div> <div>Is Active</div> <div>False</div> </div> <div> <div>Visibility</div> <div>public</div> </div> <div> <div>Is Abstract</div> <div>False</div> </div> <div> <div>Is Final Specialization</div> <div>False</div> </div> </div>		<div> <div>Object::/test-dhub/Requirements</div> <div> <div>Absolute Number</div> <div>10</div> </div> <div> <div>Object Identifier</div> <div>10</div> </div> <div> <div>Object Number</div> <div>2.3</div> </div> <div> <div>Created By</div> <div>Administrator</div> </div> <div> <div>Created On</div> <div>Apr 9, 2015</div> </div> <div> <div>Created Thru</div> <div>Extracting</div> </div> <div> <div>Last Modified By</div> <div>Administrator</div> </div> <div> <div>Last Modified On</div> <div>Apr 9, 2015</div> </div> </div>	
<div> <div>(Name)</div> <div>(Description)</div> </div>		<div> <div>(Name)</div> <div>(Description)</div> </div>	

The Conflict Dashboard Properties panel.

## Node changes in colors

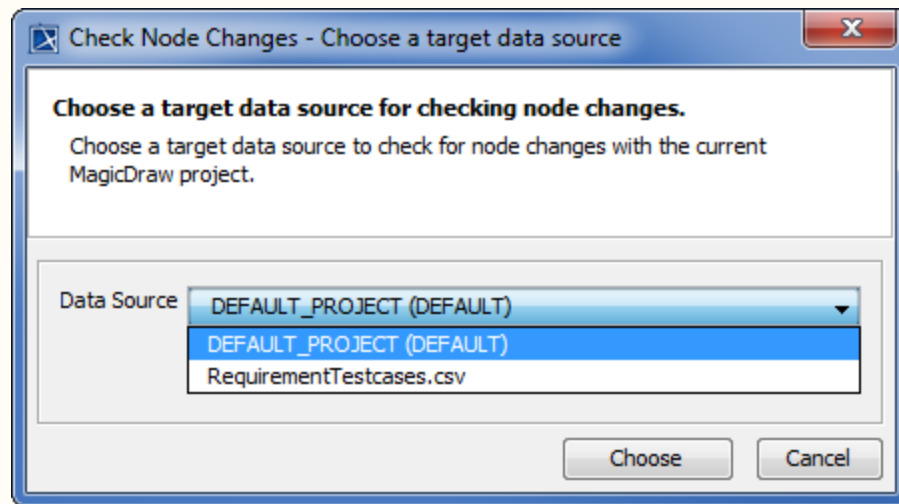
The **Conflict Dashboard** displays node changes in colors explained in the following table

Change type	Color	Meaning
New Entity	Green	Refers to a new node in the scope or a deleted node at the end of a one-way synchronization (re-create).
Modified	Blue	Refers to a modified node.
Moved	Yellow	Refers to a moved node.
Deleted	Pink	Refers to a deleted node or a new node at the end of a one-way sync (force-delete).
Out of Scope	Red Lettering	Refers to a node that is no longer within the scope of the root node.
Excluded	Gray Lettering	Refers to a node that has been excluded from synchronization.



#### Note

- You can open the **Conflict Dashboard** by right-clicking any Data Sources and select **Check Node Changes** or **Check Node Changes Recursively**.
- The **Choose a target data source** dialog opens to allow you to choose which Data Source to check for node changes. This dialog is displayed when you check for node changes in MagicDraw Data Sources, and there is more than one Data Source connected to DataHub.



The Choose a target data source dialog to check node changes.