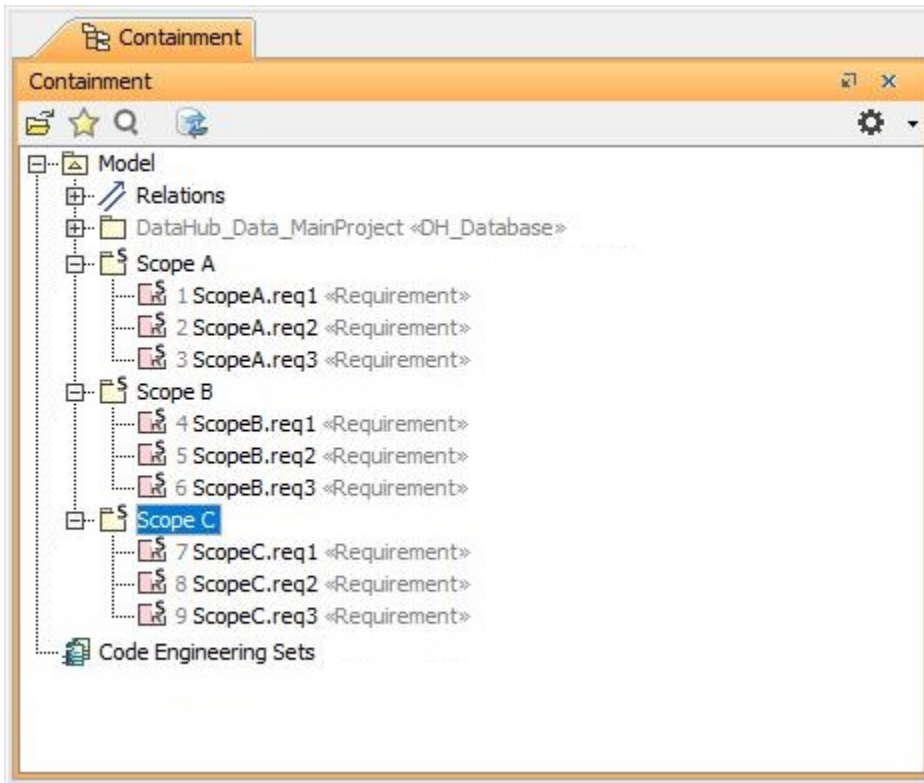


Prepare data for module

This DataHub feature allows you to split DataHub database of a project so that other projects can use the split DataHub database independently. The **Prepare Data For Module** process extracts the DataHub database of the selected Package and all the items inside so that you can export them into another project.

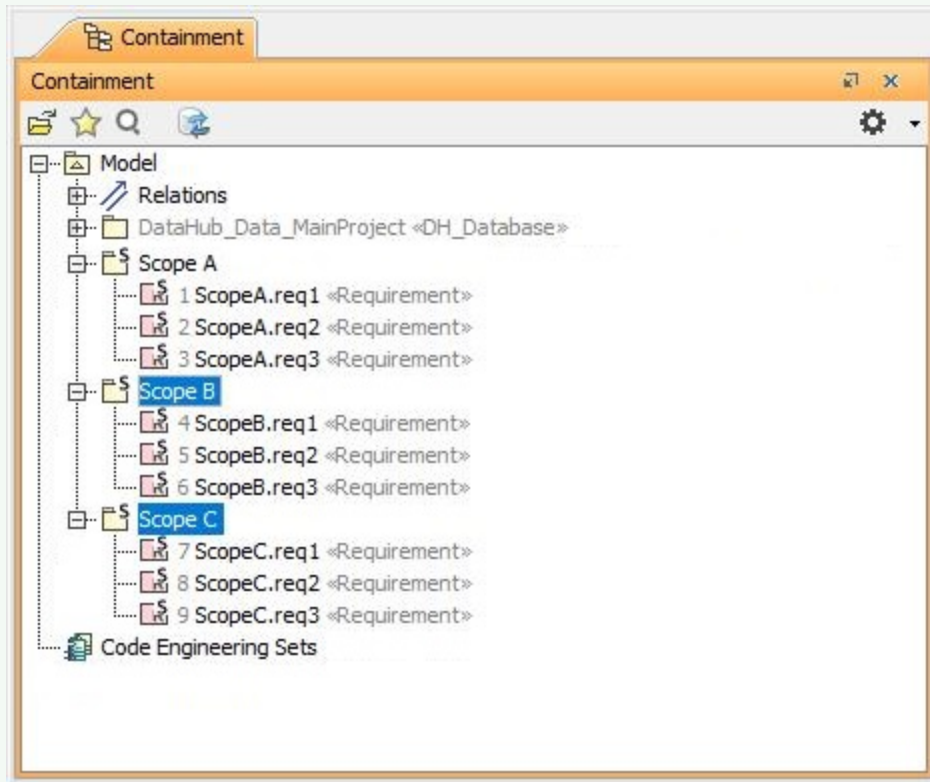
To prepare data for module

1. Select the Package(s) you want to prepare data for module.



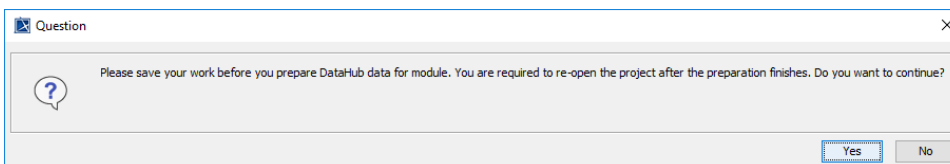
**Tip**

To select multiple Packages, hold **CTRL** while selecting each Package.

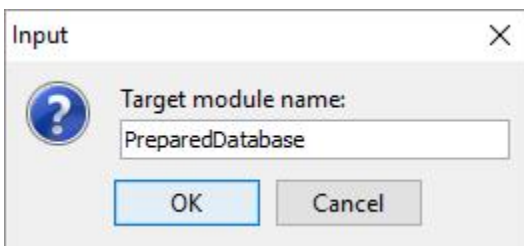


Selecting multiple Packages in the MagicDraw Containment tree.

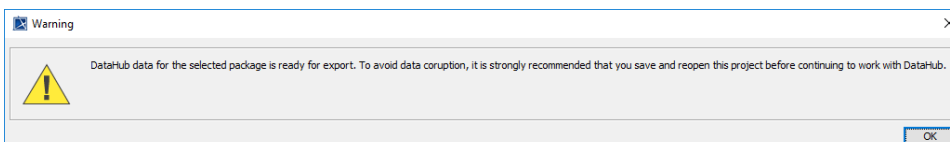
- From the MagicDraw main menu, click **Tools > DataHub > Prepare Data For Module**.
- A question dialog appears to ask you to save your work before preparing data for module. Click **Yes**.



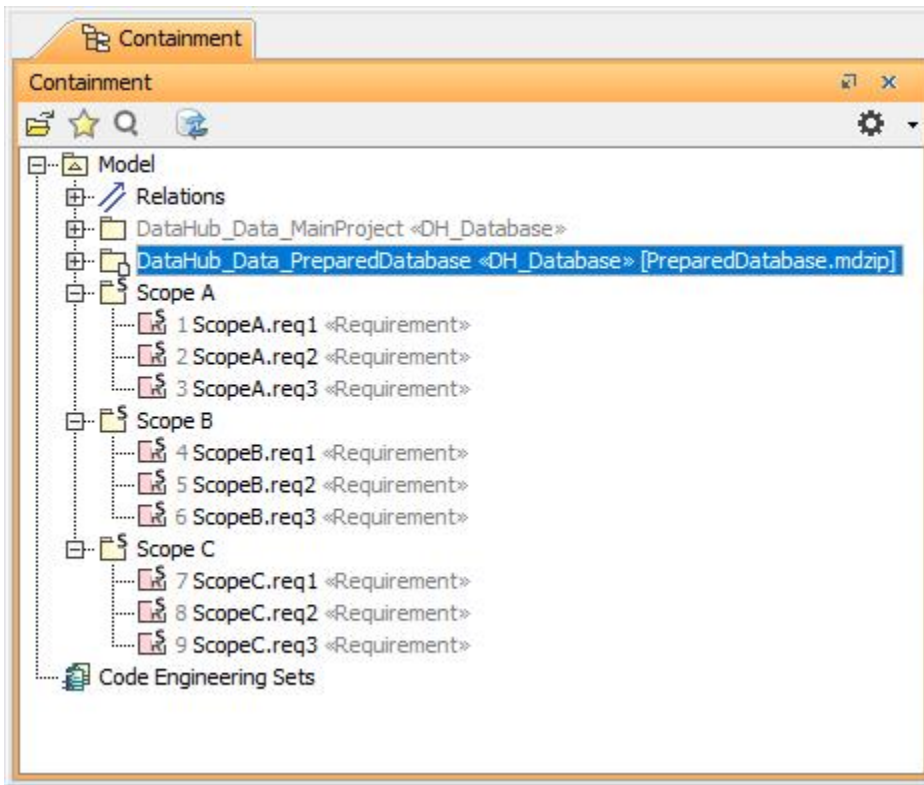
- The **Input** dialog opens. Type a name for the target module.



- A warning dialog opens to ask you to save, close, and re-open your project to prevent DHLINK references from loss. Click **OK**.



6. In the MagicDraw Containment tree, the *PreparedDatabase* Package is created. [Export the newly created package to a new project.](#)



7. Save the project and re-open the project to continue working with DataHub.