

# What's New to CD in 18.5



## News of earlier versions

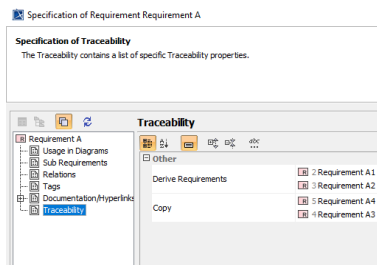
- [Cameo DataHub 18.4 FR](#)
- [Cameo DataHub 18.3 FR](#)
- [Product News Archive](#)

Released on: February 20, 2017

Cameo DataHub 18.5 supports exporting Traceability properties as well as importing the Type and Value Specification for the Property. Apart from the support, Cameo DataHub has significantly improved memory consumption, making it lighter on resources especially when you are copying data using the Sync or Trace operation mode. The release also includes several bug fixes. Get it today on [nomagic.com](http://nomagic.com) or contact your sales representative, and don't forget to give us your feedback on [Twitter](#) or [Facebook](#). Also, please check the latest [documentation](#) and additional [resources](#).

## Traceability Properties Export

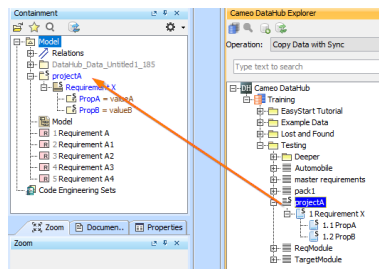
You can now export the **Traceability** properties from a MagicDraw element. This feature is very useful because after exporting the properties you can then map the target of the **Traceability** to the **Attribute**'s value.



Exporting Traceability properties from a MagicDraw element.

## Support for Type and Value Specification of MagicDraw Property

Included in this 18.5 release is the support for the **Type** and **Value Specification** properties of a MagicDraw Property element. With this support, you can now import data as a Property with a specific **Type** and **Value Specification**.



Data imported as a Property with a specific Type and Value Specification.

## Lower Memory Usage

Cameo DataHub 18.5 makes better use of the memory for every operation. It now consumes significantly less memory when running the **Copy with Sync** and **Copy with Trace** operations.

#### MagicDraw Documentation

- [Cameo DataHub 18.5](#)

#### Other Resources

- [Modeling Community Blogs](#)
- [Modeling Community Forum](#)
- [Webinars](#)
- [FAQ](#)