

NOV-6b Operational State Transition Description

Description

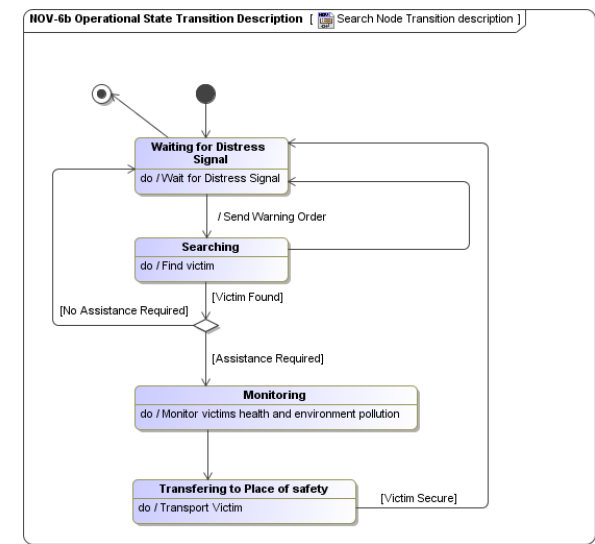
The NATO Operational State Transition Description is a graphical method of describing how an operational node or activity responds to various events by changing its state. The diagram represents the sets of events to which the architecture will respond (by taking an action to move to a new state) as a function of its current state. Each transition specifies an event and an action. The explicit sequencing of activities in response to external and internal events is not fully expressed in an NOV-5. An NOV-6b can be used to describe the explicit sequencing of the operational activities.

Alternatively, an NOV-6b can be used to reflect the explicit sequencing of actions internal to a single operational activity or the sequencing of operational activities with respect to a specific operational node. In a net-centric architecture, the NOV-6b is used to describe the set of state transitions for providers and consumers in the NetCentric Environment (NCE) in response to the posting of information to the NCE or retrieving of information from the NCE.

Implementation

NOV-6b can be represented using a UML State Machine diagram.

Sample



NOV-6b Operational State Transition Description

Related views

An NOV-6b can be used to describe the detailed sequencing of activities or work flow in the business process. The NOV-6b is particularly useful for describing critical sequencing of behaviors and timing of operational activities that cannot be adequately described in the Activity Model (NOV-5).

Related elements
<ul style="list-style-type: none">Operational State DescriptionOperational StateNode