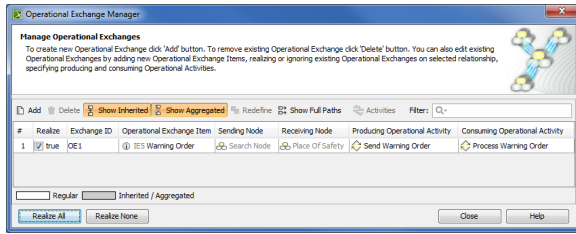



Operational Exchange Manager dialog

The Operational Exchange Manager dialog enables to analyze and manage the Operational Exchanges data. You can edit existing Operational Exchanges by adding new Operational Exchange Items, realizing or ignoring existing Operational Exchanges on selected relationship, specifying producing and consuming Operational Activities.



To open an **Operational Exchange Manager** dialog

1. Select a Node Association, Needline, Operational Activity Edge, or Operational Message in the diagram pane.
2. On the smart manipulator, click  .
The **Operational Exchange Manager** dialog opens.

Related procedures

- [Creating Operational Exchanges in L1 Node Types diagram](#)
- [Creating Operational Exchanges in L2 Logical Scenario diagram](#)
- [Creating Operational Exchanges in L4 Logical Activities diagram](#)
- [Creating Operational Exchanges in L6 Logical Sequence diagram](#)
- [Creating Operational Exchanges in OV-2 diagram](#)
- [Creating Operational Exchanges in OV-2 Internal diagram](#)
- [Creating Operational Exchanges in OV-5b diagram](#)
- [Creating Operational Exchanges in OV-6c diagram](#)
- [Realized Operational Exchange wizard](#)