

Actual Project Milestone Creation Wizard

The **Actual Project Milestone Creation Wizard** is used to define a new milestone for the selected project.

To open the **Actual Project Milestone Creation Wizard**

1. Open a AcV-2 (MODAF), [Lr Lines of Development](#) (NAF 4.0), NPV-1 (NAF), [PV-2](#) (DoDAF 2.0).
2. Select a project.
3. Do one of the following:
 - On the diagram toolbar, click **Add New > Milestone**.
 - On the selected project shortcut menu, click **Add new Actual Project Milestone**.
4. Select one of the available milestone kinds:
 - Out Of Service Milestone
 - Increment Milestone
 - Deployed Milestone
 - No Longer Used Milestone
 - Actual Project Milestone

The **Actual Project Milestone Creation Wizard** opens.

The wizard consists of three steps:

1. Milestone name, kind, and date specification.

In this step, you can specify a name of a new Milestone you are creating.

You can select one of the Milestone kinds, which are:

- Out Of Service Milestone
- Increment Milestone
- Deployed Milestone
- No Longer Used Milestone
- Actual Project Milestone

Also you can set the Milestone date and time. Date and time indicates the position of the milestone in the project time frame. For more information on setting date and time, see [Date and Time Settings dialog](#).

The screenshot shows the 'Actual Project Milestone Creation Wizard' dialog box. The title bar reads 'Actual Project Milestone Creation Wizard'. The main area is titled 'Specify name, kind and date' with a subtitle: 'Type name for the Actual Project Milestone of the selected kind. Specify exact date of the Milestone within the limits of the owning Actual Project time frame.' On the left, there are three steps: '1. Specify Name, Kind and Date' (selected), '2. Select Actual Project Milestone Type', and '3. Specify Project Status at a particular Milestone'. The main content area contains the following fields and controls:

- 'Type Actual Project Milestone name:' with a text box containing 'OOSM_NM_1'.
- 'Select Actual Project Milestone kind:' with a dropdown menu showing 'OutOfServiceMilestone [InstanceSpecification]'.
- 'Set the date and time:' with a date/time picker showing '2009-08-30T18:24:19+02:00'.
- 'Select timeline:' with a dropdown menu showing 'Enterprise Time Line'.
- 'Date:' with a calendar view for August 2009, showing the 30th as the selected date.
- 'Time:' with a time picker showing '18:24:19'.
- 'Time zone:' with a dropdown menu showing '+02:00'.

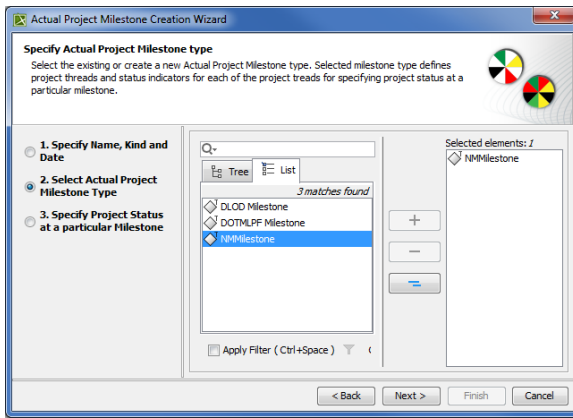
At the bottom, there are four buttons: '< Back', 'Next >', 'Finish', and 'Cancel'.

2. Project milestone type specification.

You can select one (or both) of the given milestone types:

- DLOD Milestone
- DOTMLPF Milestone

You can create your own milestone type as well.



3. Project status specification at a particular Milestone.

After creating a new milestone, you can apply the project status according to the selected milestone type. Each milestone type can have specific project threads and status indicators.

| | DLOD Milestone type | DOTMLPF Milestone type |
|-------------------|---|--|
| Project threads | <ul style="list-style-type: none"> • Equipment • Logistics • Infrastructure • Organization • Doctrine/Concepts • Information • Personnel • Training | <ul style="list-style-type: none"> • Doctrine • Organization • Training • Materiel • Leadership • Personnel • Facilities |
| Status indicators | <ul style="list-style-type: none"> • DLOD Absent • Not Required • No Outstanding Issues • Manageable Issues • Critical Issues | <ul style="list-style-type: none"> • Materiel Solution Analysis • Technology Development • Engineering and Manufacturing Development • Production & Deployment • Operations & Support |

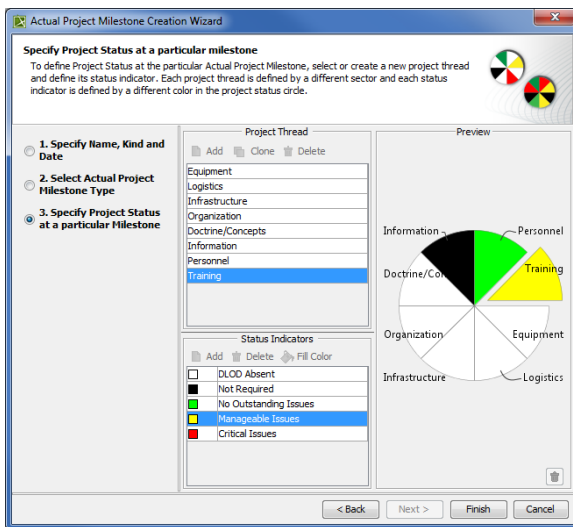
You can also define you own milestone type with a custom set of project threads and status indicators.

To create project threads and status indicators

1. In the Project Thread area, click the **Add** button.
2. Specify the thread name.
3. In the Status Indicator area, click the **Add** button.
4. Specify the indicator name.
5. Click the **Fill Color** button.
6. In the **Color** dialog select the color and click **OK**.



To create a second thread with the same status indicators, select a previously created thread and click the **Clone** button. A new thread with previously defined status indicators are created.



Related procedures

- [Adding Milestones in Lr diagram](#)
- [Adding Milestones in PV-2 diagram](#)