

Capability Provision Creation Wizard

The **Capability Provision Creation Wizard** is used to define a Capability Provision by one or more Resources at a specific period of time.

To open the **Capability Provision Creation Wizard**


1. Open a [CV-3](#) (DoDAF), StV-3 (MODAF), NCV-3 (NAF), or [Cr](#) (NAF 4.0)
2. Select a Capability.
3. Do one of the following:
 - On the <viewpoint name> diagram toolbar, click **Add New > Capability Provision**.
 - Right-click the Capability and select **Add New Capability Provision**.

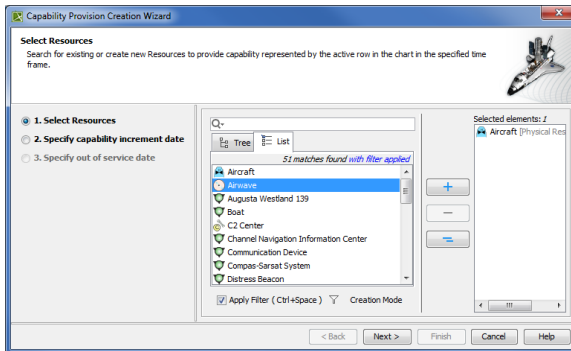
The **Capability Provision Creation Wizard** opens.

The wizard consists of three steps:

1. Resources selection.


In this step, you can select the existing or create new resources.

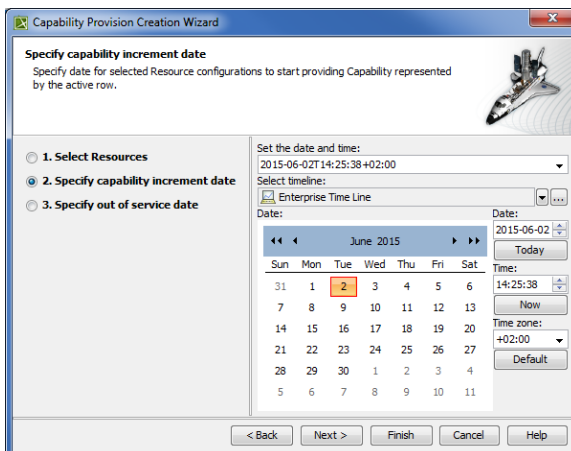
 For more information on selecting elements, see [Diagram Creation Wizard](#), Step #2.



2. Capability increment date specification.


In this step, you can set the date and time, when the resource should begin provisioning the capability. The increment milestone is created.

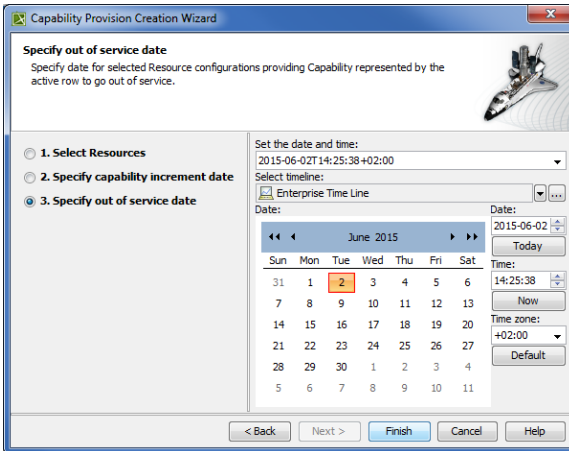
 For more information on setting the day and time, see [Date and Time Settings](#) dialog.



3. Out of service date specification (Optional).

In this step, you can specify when the Resource should stop provisioning the Capability. The out of service Milestone is created. This step is optional. If you skip this step, the capability exhibition bar on the chart will have the triangle ending.

 For more information on setting date and time, see [Date and Time Settings](#) dialog.



The screenshot shows the 'Capability Provision Creation Wizard' dialog box, specifically the 'Specify out of service date' step. The dialog has a title bar with a close button. The main area is divided into two panes. The left pane contains three radio buttons: '1. Select Resources', '2. Specify capability increment date', and '3. Specify out of service date', with the third option selected. The right pane contains the date and time selection controls. At the top, it says 'Set the date and time:' followed by a text box showing '2015-06-02T14:25:38+02:00'. Below this is a 'Select timeline:' dropdown menu set to 'Enterprise Time Line'. The 'Date:' section features a calendar for June 2015, with the 2nd of June highlighted. To the right of the calendar is a 'Date:' text box showing '2015-06-02' and a 'Today' button. The 'Time:' section has a text box showing '14:25:38' and a 'Now' button. The 'Time zone:' section has a dropdown menu set to '+02:00' and a 'Default' button. At the bottom of the dialog are five buttons: '< Back', 'Next >', 'Finish', 'Cancel', and 'Help'.

Capability Provision Creation Wizard

Specify out of service date
Specify date for selected Resource configurations providing Capability represented by the active row to go out of service.

☐ 1. Select Resources
☐ 2. Specify capability increment date
☒ 3. Specify out of service date

Set the date and time:
2015-06-02T14:25:38+02:00

Select timeline:
Enterprise Time Line

Date:
June 2015
Sun Mon Tue Wed Thu Fri Sat
31 1 2 3 4 5 6
7 8 9 10 11 12 13
14 15 16 17 18 19 20
21 22 23 24 25 26 27
28 29 30 1 2 3 4
5 6 7 8 9 10 11

Date:
2015-06-02
Today

Time:
14:25:38
Now

Time zone:
+02:00
Default

< Back Next > Finish Cancel Help

Related procedures

- [Adding Capabilities in Cr diagram](#)
- [Adding Capabilities to CV-3 diagram](#)