

# Realized Operational Exchange wizard

The **Realized Operational Exchange** wizard gives the instructions to follow, when adding a new Operational Exchange or selecting one of the existing Operational Exchanges to:

- A Needline between a pair of Performer usages in OV-2 (NOV-2 in NAF) diagrams.
- An Operational Activity Edge between a pair of Operational Activities in OV-5 (NOV-5 in NAF) behavioral diagram.
- An Operational Message between a pair of two lifelines of Performers in OV-6c (NOV-6c in NAF) diagram.

The **Realized Operational Exchange** wizard includes of two steps:

1. Operational Exchange creation (mandatory).


This step is designed to create a new Operational Exchange by specifying a Conveyed Item, both sending and receiving Performers, and a direction of a Operational Exchange. Depending on a fact, if selected Performers are known or not, requested information differs:



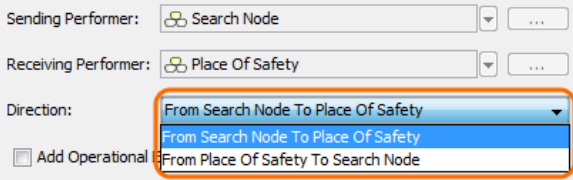
- If sending and receiving Performers are unknown form the wizard invocation context, you need to specify both.

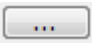

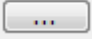
The screenshot shows the 'New Operational Exchange' wizard window. The title bar is 'Realized Operational Exchange'. The main heading is 'New Operational Exchange' with a subtext: 'To create new Operational Exchange, specify Exchange Type, Conveyed Information Item, Sending and Receiving Performers.' On the left, there are two steps: '1. Create New or Select Existing Operational Exchange' (selected) and '2. Specify Producing and Consuming Activities'. The right pane contains the following fields: 'Exchange Kind' (dropdown menu set to 'Information Exchange'), 'Conveyed Item' (text box), 'Sending Performer' (dropdown menu set to 'Search Node'), 'Receiving Performer' (dropdown menu set to 'Place Of Safety'), and 'Direction' (dropdown menu set to 'From Search Node To Place Of Safety'). There is also a checkbox 'Add Operational Exchange to corresponding relationships' which is unchecked. At the bottom are buttons: '< Back', 'Next >', 'Finish', 'Cancel', and 'Help'.

- If sending and receiving Performers are known, they are added to a **Realized Operational Exchange** wizard automatically.

The screenshot shows the 'New or Existing Operational Exchange' wizard window. The title bar is 'Realized Operational Exchange'. The main heading is 'New or Existing Operational Exchange' with a subtext: 'To create new Operational Exchange, specify Exchange Type, Conveyed Information Item and Exchange Direction. You can also select existing Operational Exchange from Drop Down List.' On the left, there are two steps: '1. Create New or Select Existing Operational Exchange' (selected) and '2. Specify Producing and Consuming Activities'. The right pane contains the following fields: 'Exchange Kind' (dropdown menu set to 'Information Exchange'), 'Conveyed Item' (text box set to 'Distress Signal'), 'Operational Exchange' (dropdown menu set to 'OE13 Operational Exchange:flow for Distress Signal'), and 'Direction' (dropdown menu set to 'From Person In Distress To Search Node'). There is also a checkbox 'Add Operational Exchange to corresponding relationships' which is unchecked. At the bottom are buttons: '< Back', 'Next >', 'Finish', 'Cancel', and 'Help'.

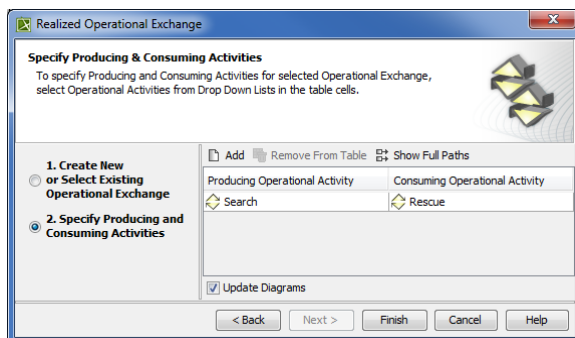
Box	Description
Conveyed Item	One or more Operational Exchange Items that are conveyed by the information flow from the sending Performers to receiving Performers.
Operational Exchange	<p>Operational Exchange that specifies an information flow for specified conveyed items.</p> <p>If you select an existing Operational Exchange from the drop-down list, Conveyed Item and Direction boxes will be filled with corresponding information automatically. You will be able to edit values of conveyed items.</p> <p>The direction of the information flow won't be editable.</p> <div> Available if sending and receiving Performers are known from the wizard invocation context.</div>

Sending Performer	Performer that sends the specified conveyed information.  <div>  Available if a Performer is unknown from the wizard invocation context.         </div>
Receiving Performer	Performer that receives the specified conveyed information.  <div>  Available if a Performer is unknown from the wizard invocation context.         </div>
Direction	Direction of the information flow.  <p>After changing the direction from the default one, the sending Performance is switched with the receiving Performance. The direction of the Operational Exchange is changed accordingly.</p>
Add Operational Exchange to corresponding relationships	Select the check box, if you want to add the Operational Exchange to corresponding relationships existing in other related diagrams.

Button	Description
 (by the <b>Conveyed Item</b> box)	Click to open the <b>Select Conveyed Information</b> dialog to select or create a conveyed item. You can specify more than one conveyed item.
 (by the <b>Sending Performer</b> box)	Click to open the element Selection dialog.
 (by the <b>Receiving Performer</b> box)	Click to open the element Selection dialog.

## 2. Producing and Consuming Activities specification (optional).

This step is designed to specify Producing and Consuming Activities for the created or selected Operational Exchange. Operational Exchanges are produced and consumed by Activities acting under the Performers.



## Related procedures

- [Creating Operational Exchanges in L1 Node Types diagram](#)
- [Creating Operational Exchanges in L2 Logical Scenario diagram](#)
- [Creating Operational Exchanges in L4 Logical Activities diagram](#)
- [Creating Operational Exchanges in L6 Logical Sequence diagram](#)
- [Creating Operational Exchanges in OV-2 diagram](#)
- [Creating Operational Exchanges in OV-2 Internal diagram](#)
- [Creating Operational Exchanges in OV-5b diagram](#)
- [Creating Operational Exchanges in OV-6c diagram](#)
- [Operational Exchange Manager dialog](#)