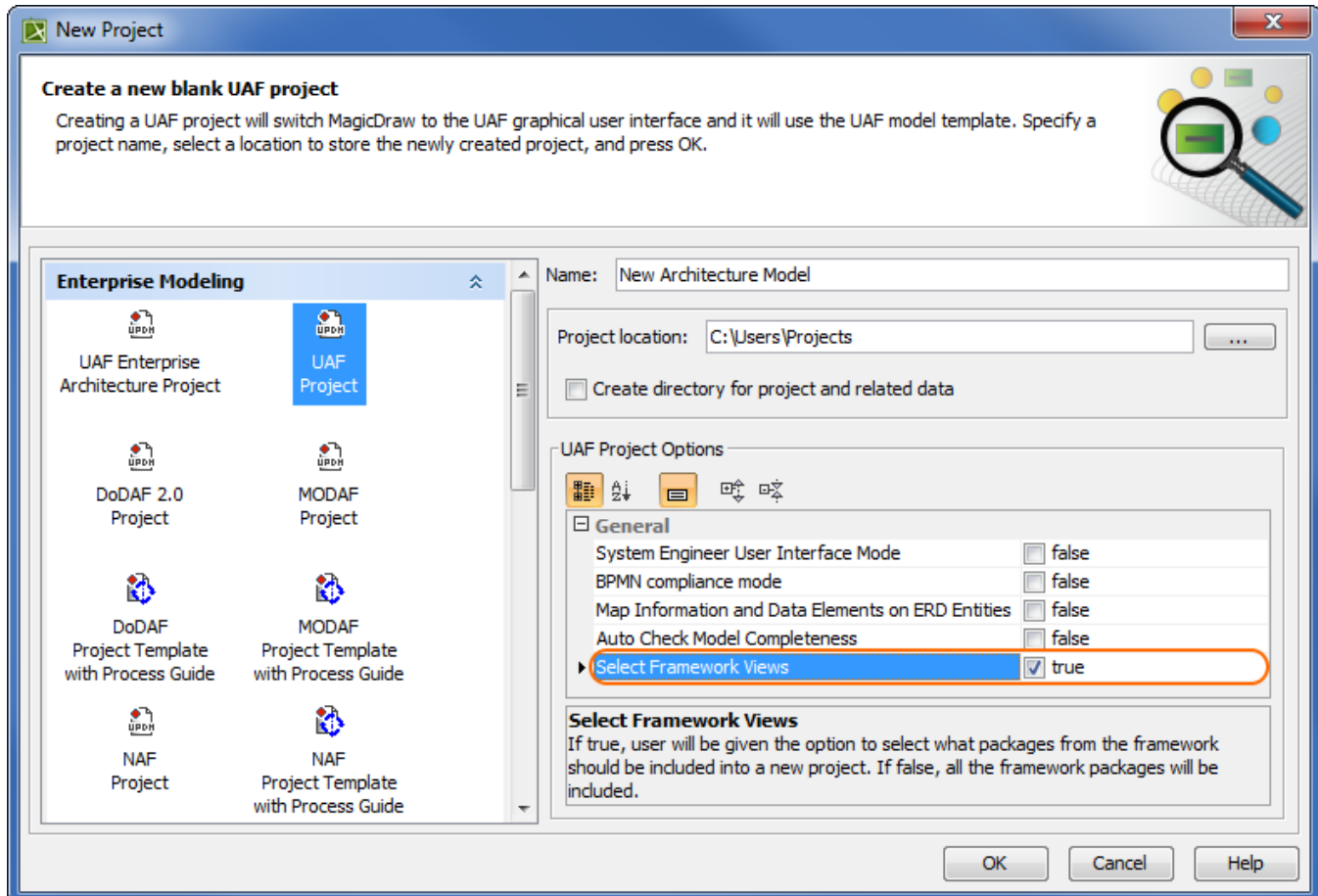


Select Framework Views dialog

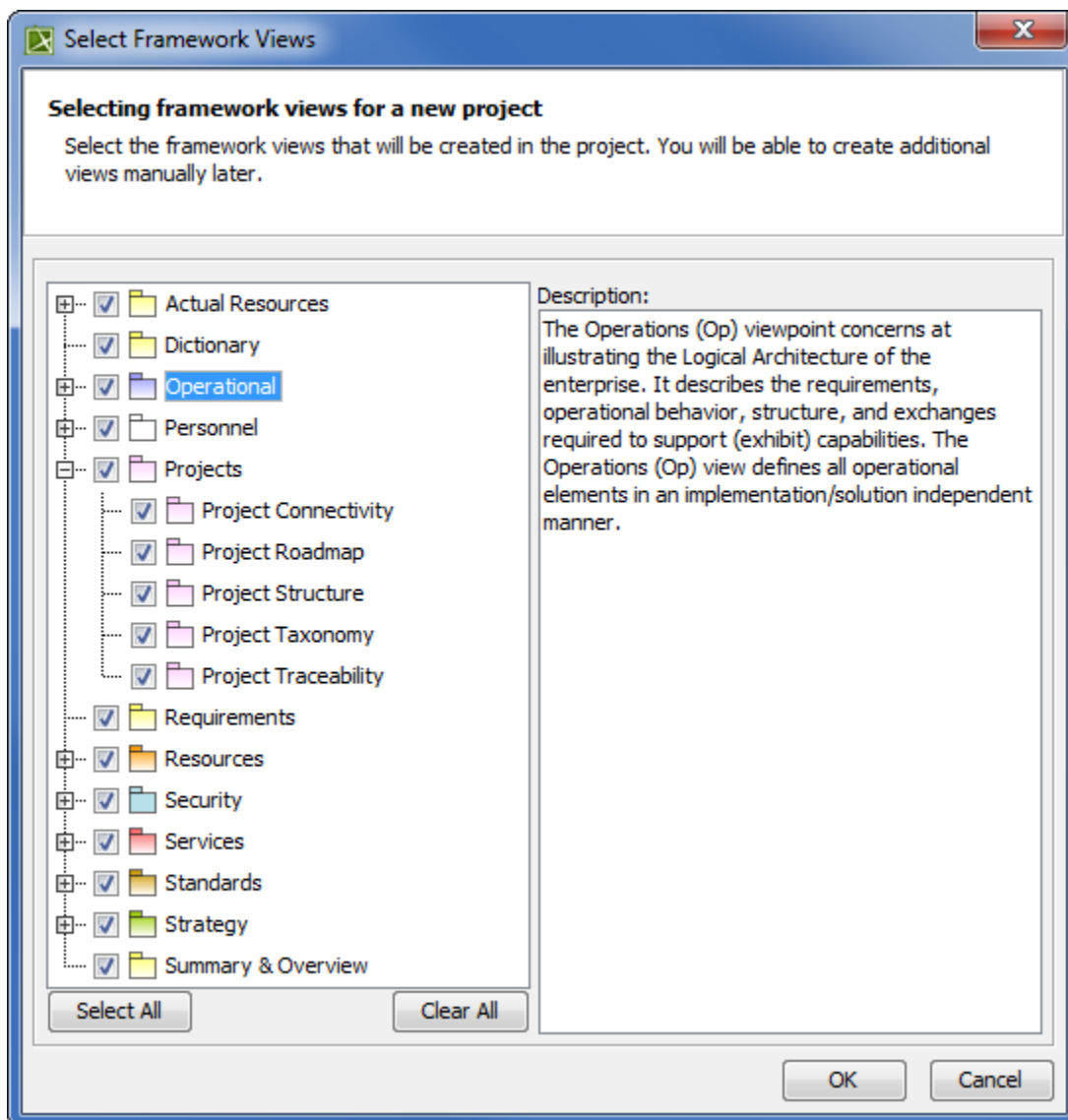
When you create a new project, you can easily define your own project structure by choosing only the views that you really need. You can achieve this by using the **Select Framework Views** dialog.

The **Select Framework Views** dialog is displayed when the **Select Framework Views** option in the **New Project** dialog is set to *True*. By default this option is set to *True*. If you want to create a project with the default structure containing all the views, set this option to *False*.



The Select Framework Views option in the New Project dialog

In the **Select Framework Views** dialog, you can select which views you want to create in your model.



The dialog for selecting views for your new project