

# MODAF. SOV-2 Service Interface Specification

## Description

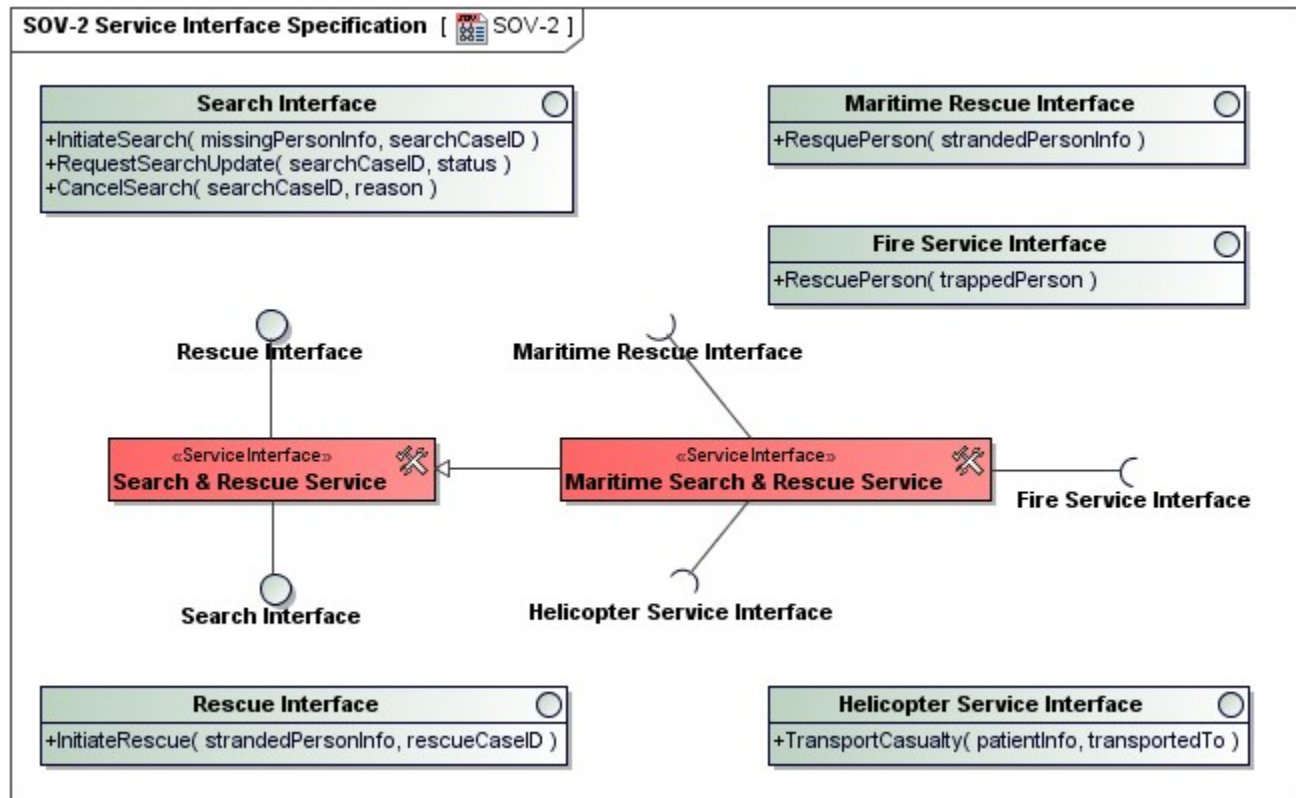
The purpose of the Service Interface Specification View (SOV-2) is to define the interfaces presented by a service. A Service presents one or more interfaces to consumers (a "consumer" being any agent capable of using the service – a person, an organization, a system or another service). In this case, the architect specifies the provided interfaces. A service may also be capable of using interfaces exposed by other services, and the architect may specify these as used interfaces.

## Implementation

SOV-2 can be represented using

- Report which is automatically generated from all data
- SOV-2 diagram which is based on the UML Class diagram

## Sample



SOV-2 Service Interface Specification

## Related elements

- [Service Interface](#)
- [Service Method](#)
- [Service Parameter](#)
- [Resource Port](#)