

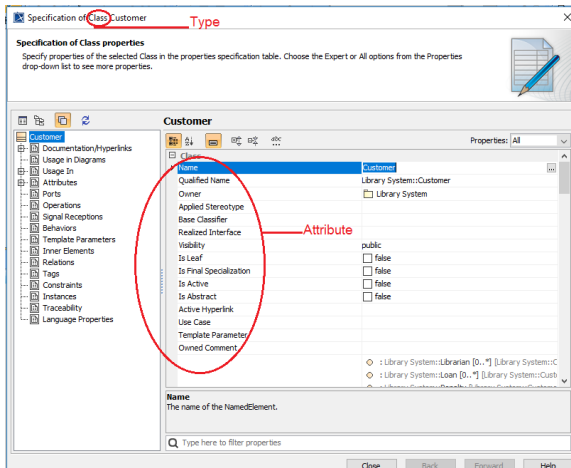
Getting a value from a MagicDraw element to a template

Getting element values to a template

You can access the value of an element, and include it in a report in Report Wizard.

How to get a value from a modeling tool element to a template

1. First you need to know the element type and attributes. Open the Specification dialog to see the type and attributes (Figure 1).



The Specification dialog showing the element type on the title bar and the attributes in the properties specification table

2. Open Microsoft Word and type, for example:

```
#foreach ($class in $Class)
  Name: $class.name
  Owner: $class.owner.name
  Visibility: $class.visibility
  Is Abstract: $class.isAbstract
#end
```

The example above shows that **\$Class** is an array that contains all the Class elements in a **Selected Element Scope** (see [Report Wizard user guide](#) for more information). **\$class** is the individual Class element inside the array. To access the value of a property in **\$class**, type: **\$class** followed by "." and the attribute's name ("**.name**", "**.visibility**", and "**.isAbstract**" are the names of the **\$class** attribute). The syntax for accessing the attribute value can be represented by: **\$(Referenced object).[Attribute's name]**.

When you generate the output of the template for a project with a single Class element, the result will be shown as follows:

```
Name: Customer
Owner: com
Visibility: public
Is Abstract: false
```

On this page

- [Getting element values to a template](#)
 - [How to get a value from a modeling tool element to a template](#)
- [Glossary](#)
- [More information about working with values in Report Wizard](#)

Glossary

An array is a container object that holds a fixed number of values of a single type. The length of an array is established when the array is created. After it is created, its length is fixed.

Attribute defines values that can be attached to instances of the class or interface. For example, an attribute of a class represents the characteristics of the class.

Class is the concrete realization of EncapsulatedClassifier and BehavioedClassifier. The purpose of a class is to specify a classification of objects, and to specify the Features that characterize the structure and behavior of those objects.

Element is a constituent of a model. Every element has the inherent capability of owning other elements. When an element is removed from a model, all its ownedElements are also removed from the model.

The abstract syntax for each kind of element specifies what other kind of elements it may own. Every element in a model must be owned by exactly one other element of that model, with the exception of the top-level Packages of the model.

More information about working with values in Report Wizard

To learn more about working with values in Report Wizard, visit the following pages:

[Retrieving slot value](#)

[Getting property value](#)