

Generating reports from the Containment tree

After creating a Report Data in your model, you can generate a report directly from the Containment tree. You can right-click either Model or Report Data to generate it.

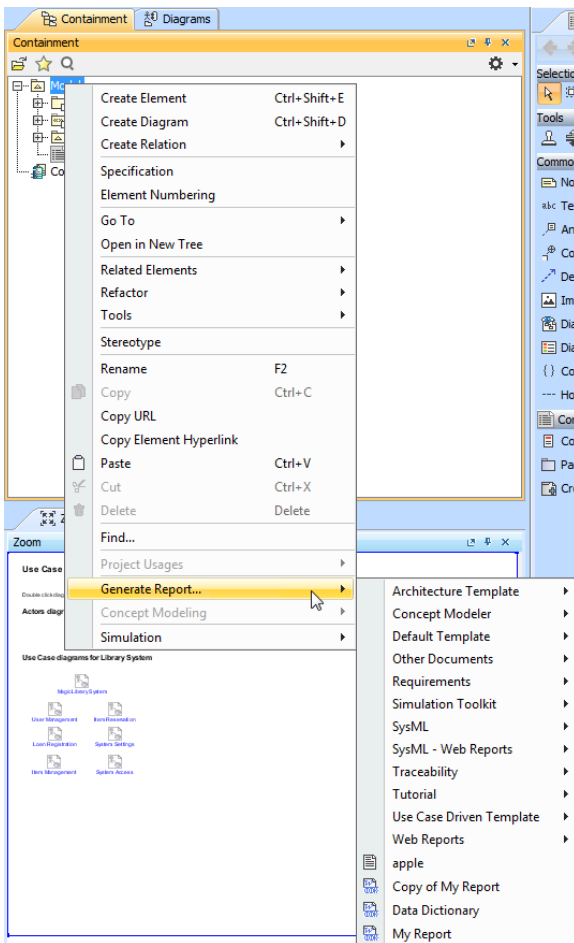
- [Generating a report from Model in the Containment tree.](#)
- [Generating a report from Report Data in the Containment tree.](#)



You must specify the template and data in the report data to generate a report from the **Report Data** in the Containment tree.

How to generate a report from Model in the Containment tree

1. Right-click a package in the Containment tree, select **Generate Report**, and then select a template.

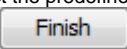


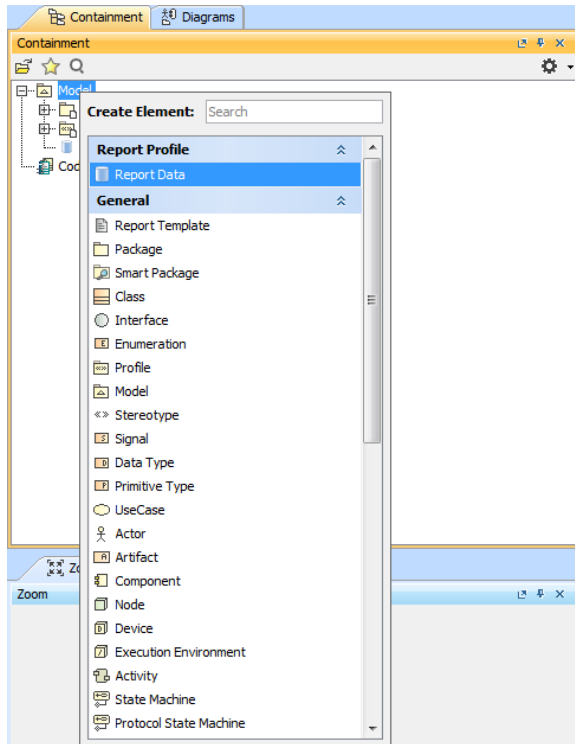
Generating a report from Model in the Containment tree

2. Select the save location and type the filename. A dialog will open asking if you want to open the report in the default viewer after the report generating process is complete.


3. Click either or .

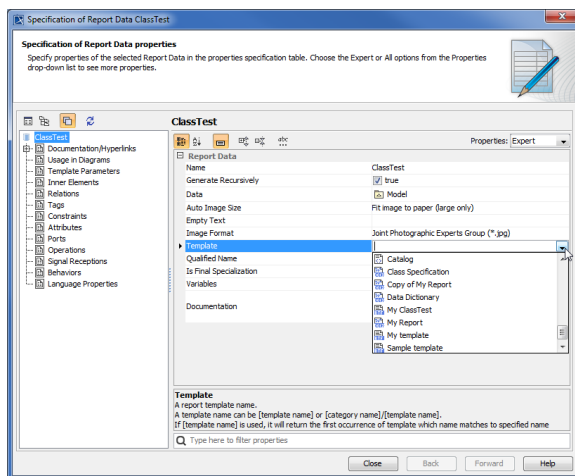
How to generate a report from Report Data in the Containment tree

1. Create a project in MagicDraw.
2. Click **File > Use Project > Use Local Project**. The **Use Project** dialog will open.
3. Select the predefined path: **<install.root>\profiles** and the predefined profile: **Report Profile**
4. Click . The Report Profile will be added to your project in read-only mode.
5. Right-click Model and select **Create Element**.
6. Select ReportData. Report Data will be created under Model.



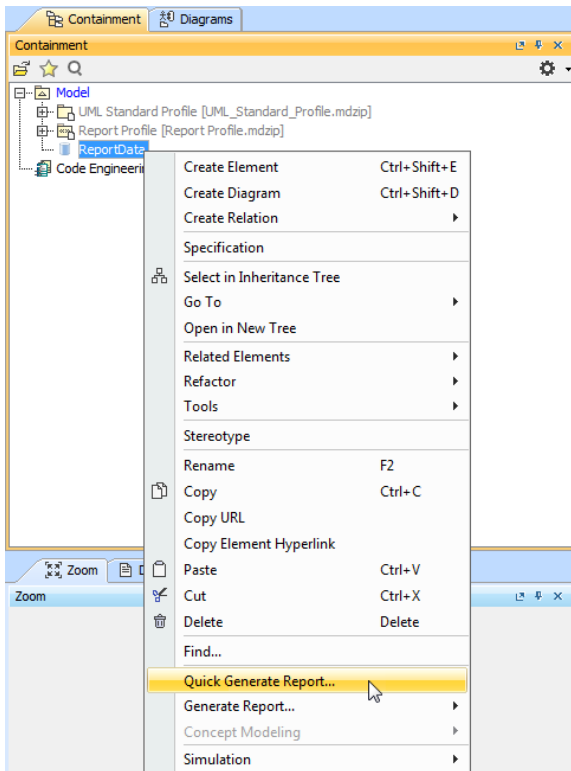
Creating report data in the Model in the Containment tree

7. Right-click the Report Data in the Containment tree, and select Specification to open its **Specification** dialog.
8. Select a template file, and click .



Selecting a template file for the Report Data using the Specification dialog

9. Right-click the Class element in the Containment tree, and select **Quick Generate Report**. The **Select Location** dialog will open.



Generating a report from Report Data in the Containment tree

10. Either create a new file, or select an existing one (the content of the generated report will override that of the selected file).



- To open the **Report Wizard** dialog and modify the data or output properties, click the **Report Wizard** on the shortcut menu.
- By default, the **Quick Generate Report** command will select the default settings from the last changes saved to the **Report Data**.

Glossary

Model is the package that is placed at the highest level of the Containment tree in MagicDraw.

Report data is a collection of variables in a report in Report Wizard.

Report template in Report Wizard is a file that serves as a starting point for a new report.

More information about generating reports in Report Wizard

To learn more about generating reports using Report Wizard, you can visit the following page:

[Generating Reports from Report Wizard](#)