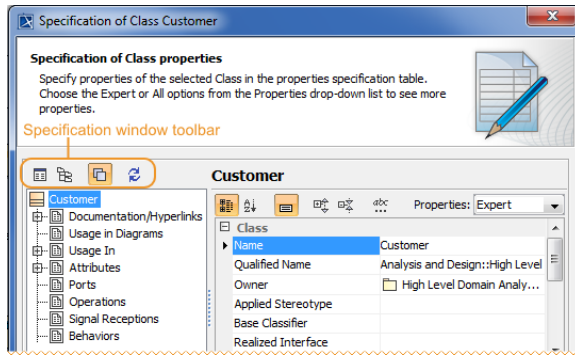






Specification window toolbar



- Functions of Specification window
- Specification window toolbar
- Property group toolbar
- Quick filter

Icon	Name	Description
	Open Specification	Opens specification of the selected referenced element in the same window.
	Select in Containment Tree	Selects the chosen element in the Containment tree of the Model Browser.
	Specification Opening Mode	If selected, the referenced Specification windows are opened in the same window. To navigate between specifications, use Back and Forward buttons. You can cancel the selection, if you need the Specification window to be open for each element in a separate window, for example, to compare specifications of several elements at the same time.
	Refresh	Refresh data of the Specification window. Refresh the Specification window of an element to see if any changes that are not directly related to that element were made. Also you may need to refresh data if the Specification window is open for a long time.