

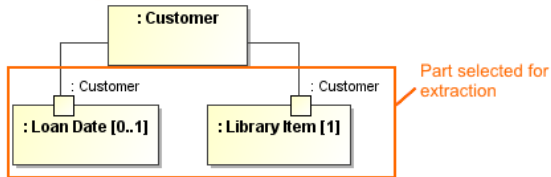
# Extracting in Composite Structure diagram



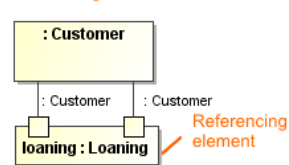
With the SysML plugin, the extracting in composite structure diagram feature is available in Standard, Professional, Architect, and Enterprise editions.

The extraction functionality allows for extracting a selected part of a composite structure diagram to a newly created diagram. After extraction, a property is created in the source diagram in place of the extracted part(s). That is, the property is a referencing element that references the newly created activity diagram.

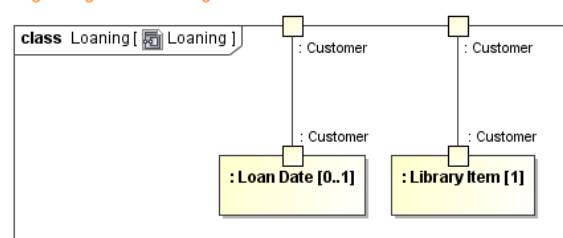
Source diagram



Source diagram after extraction



Target diagram - new diagram created after extraction



As you can see in the example, during extraction, the selected part of the composite structure diagram is moved to the newly created *Loaning* composite structure diagram. In the source composite structure diagram, a *loaning* property is created in a place of the selected elements.

## Related pages

- [Extract Structure Wizard](#)

## Related pages

- [Extracting](#)
- [Working with model elements](#)