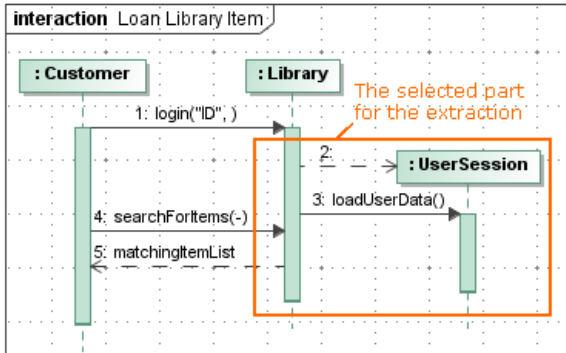


# Extracting in Sequence diagram

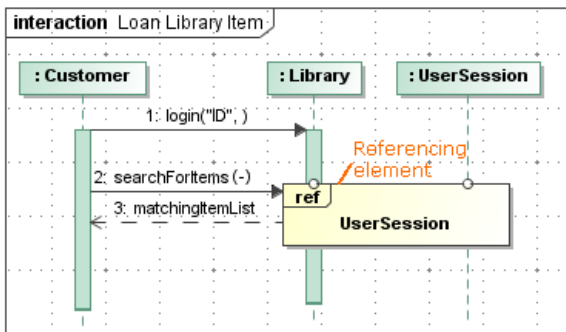
The extraction functionality allows extracting a selected part of a sequence diagram to a newly created diagram. After extraction, an interaction use is created in the source diagram in place of the extracted part (s).

That is, the interaction use is a referencing element that references the newly created sequence diagram.

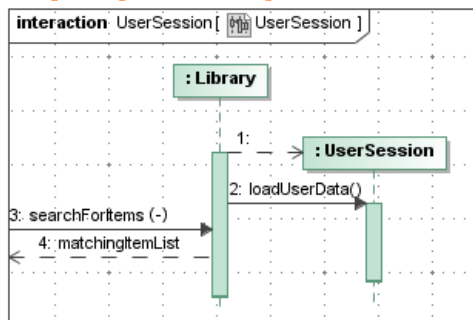
Source diagram



Source diagram after extraction



Target diagram - new diagram after extraction



As you can see in the example, during the extraction, the selected part of the sequence diagram is moved to the newly created *UserSession* sequence diagram. The interaction use element that references the *UserSession* interaction is created in the source diagram.

## Related pages

- [Rules of extracting in Sequence diagram](#)
- [Extract Sequence Wizard](#)

## Related pages

- [Extracting](#)
- [Working with model elements](#)