

# Messages in Communication diagrams

Messages in [Communication diagrams](#) can only be depicted on connectors; thus, you should draw a connector before assigning a Message to it.


The following steps show you how to work with messages:

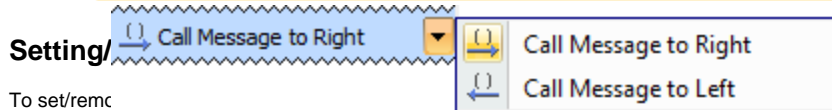
- [Assigning a message to a connector](#)
- [Setting/removing the advanced numbering of messages](#)
- [Changing current message numbering](#)
- [Displaying messages](#)

## Assigning a message to a connector

To assign a message to a connector

1. On the diagram palette, click the button corresponding to the desired Message type.
2. Click a desired connector on the diagram pane. A Message arrow will be placed on the selected connector.

 Message flow has two directions: right and left. Choose one of them by clicking the associated button on the diagram palette.

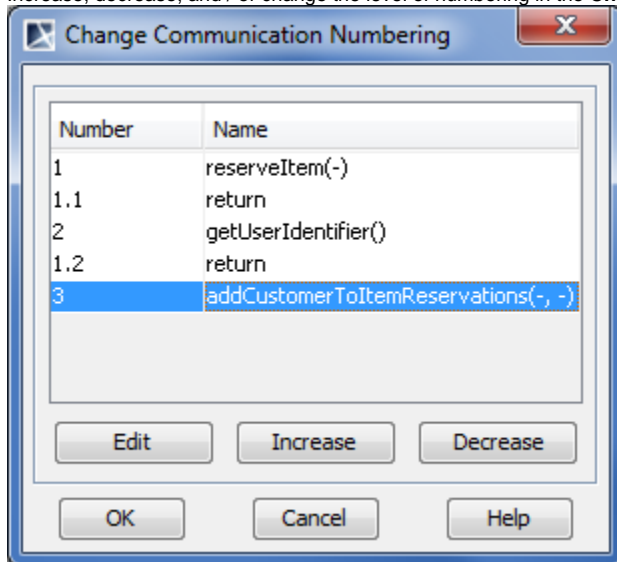


1. From the diagram shortcut menu, select **Numbering**.
2. Select to set, or clear to remove the **Use Advanced Numbering**.

## Changing current message numbering

To change current message numbering

1. From the diagram shortcut menu, select **Numbering > Change Numbering**.
2. Increase, decrease, and / or change the level of numbering in the **Change Communication Numbering** dialog.

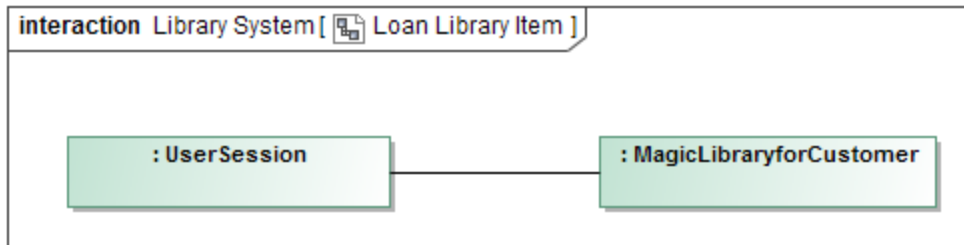


 If the **Edit** button is inactive, [remove the automatic advanced numbering](#) of Messages.

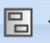
## Displaying messages

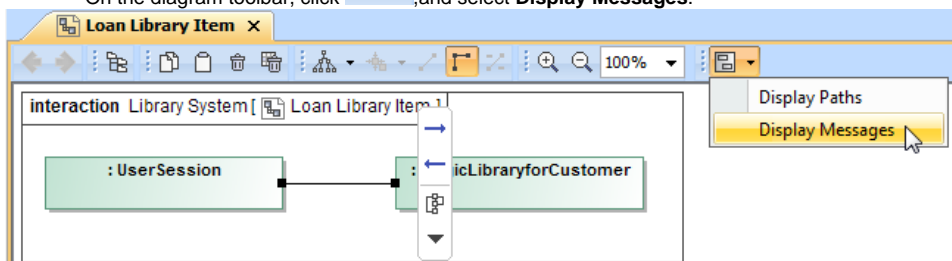
If you want to display messages on connectors in the Communication diagram you must first implement the following conditions (see the figure below):

- Messages are assigned to connectors. [How to assign a message to connector >](#)
- The lifeline shapes are already displayed on the diagram pane. [How to display lifelines >](#)
- The paths between lifelines are displayed on the diagram pane. [How to display paths >](#)

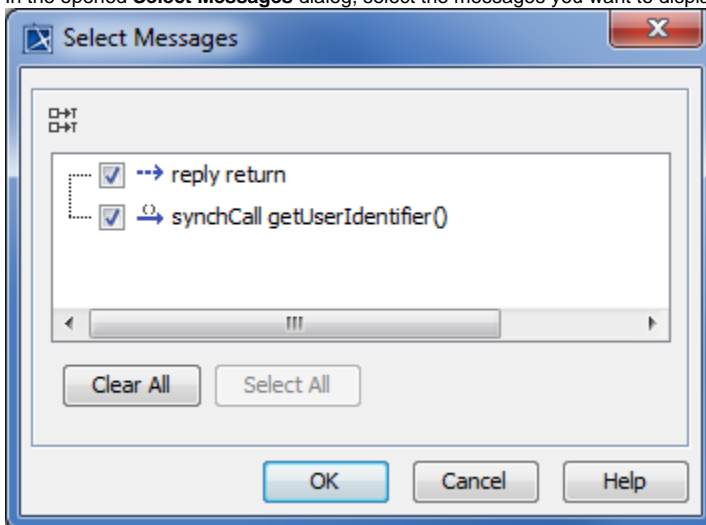


To display messages

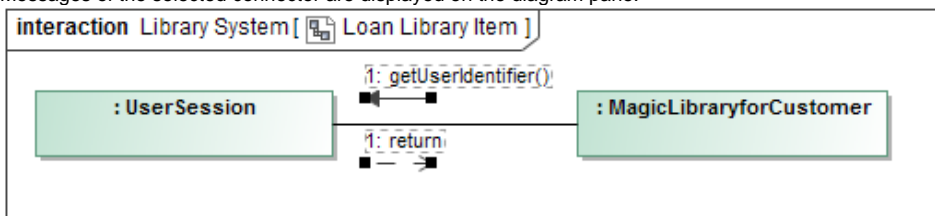
1. Select the connector between lifelines.
2. Perform one of the following actions:
  - Right-click the connector to open the shortcut menu, and select **Display > Display Messages**.
  - On the diagram toolbar, click , and select **Display Messages**.



3. In the opened **Select Messages** dialog, select the messages you want to display, and click **OK**.



Messages of the selected connector are displayed on the diagram pane.



- [Model Elements](#)
- [Specification Window](#)
- [Lifelines](#)
- [Interaction](#)
- [Operation](#)
- [Message](#)

The model used in the figures of this page is the **Communication diagram** sample model that comes with MagicDraw. To open this sample do one of the following:

- Download [communication diagram.mdzip](#).
- Find in modeling tool *<modeling tool installation directory>\samples\diagrams\communication diagram.mdzip*.