


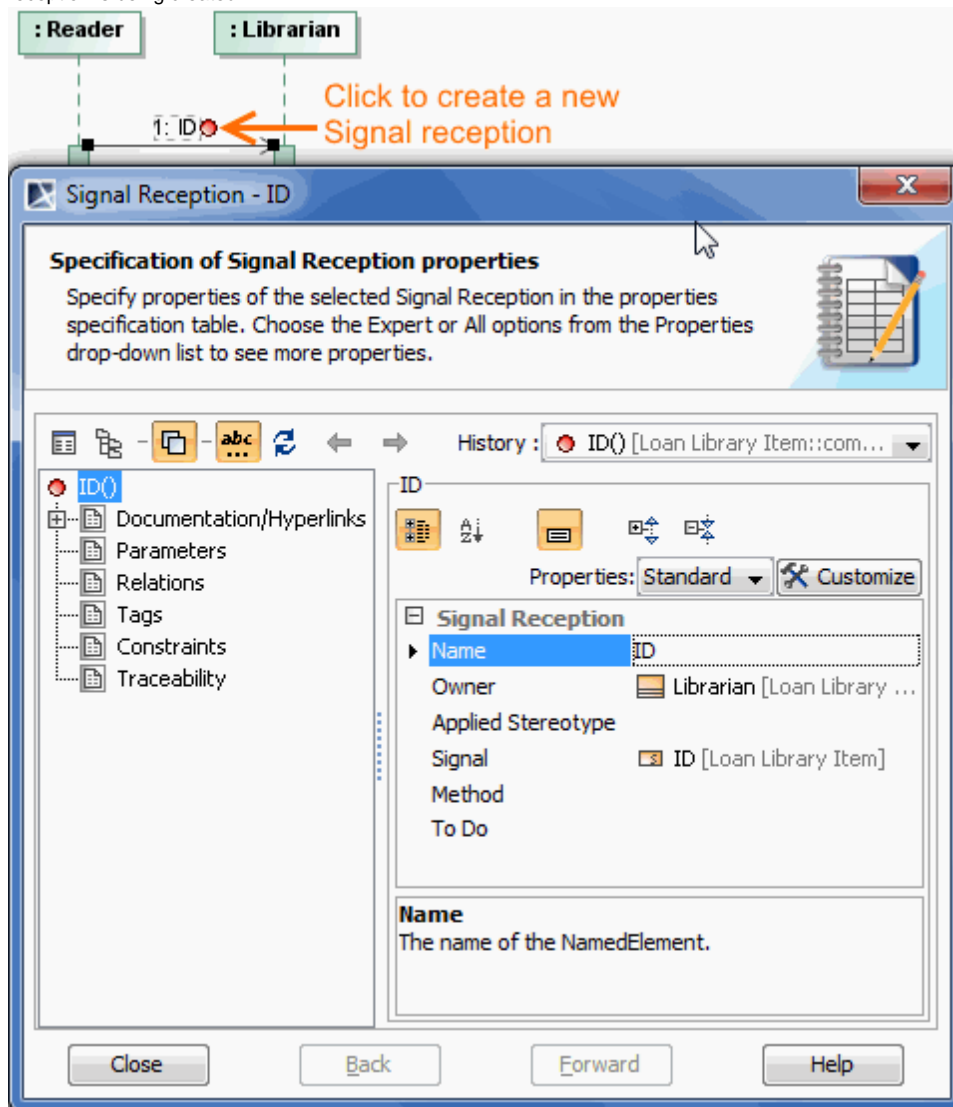
Creating Signal receptions for Messages

Assigning a Signal reception to a Message is very similar to the procedure of [assigning an Operation to a Message](#).

 These two conditions must be satisfied when creating a new Signal reception:

- At least one Signal must exist in your project.
 - A possible Signal reception receiver (an activation to which the Message points) must have a type assigned.
- To create a new signal reception for the message

1. Draw a send Message between the [Lifelines](#) or select an existing one on a diagram pane.
2. [Assign a Signal to the Message](#).
3. Do one of the following:
 - Click the button in the shape of a small red circle at the end of the Message name. Define the Signal reception property values in the Signal reception [Specification window](#). The default name of the Signal reception is the name of the Message for which the Signal reception is being created.



- From the Message shortcut menu, select the **Create New Signal Reception** (the command with the small red circle icon, as shown above). Define Signal reception property values in the Signal reception [Specification window](#). The default name of the Signal reception is the name of the Message for which the Signal reception is being created.

Related pages

- [Model Elements](#)

- Specification Window
- Lifelines
- Interaction
- Operation
- Message