

Selecting criteria

On this page

- [Specifying element type](#)
- [Specifying dependency criterion](#)
- [Specifying relationship direction](#)
- [Specifying what elements are visible on the matrix](#)

To create a Dependency Matrix, first of all you need to define which data you wish to display on its pane. Select row and column element types, row and column scope, direction of relationships as well as dependency criteria for this. Be advised that the easiest way to define all the above mentioned criteria, except the type of relationships direction is using the drag-and-drop operation.

A lot of properties of the Dependency Matrix can be specified in the the matrix [Specification window](#).



You can open the matrix [Specification window](#) in one of the following ways:

- From the [matrix shortcut menu](#)
- From the [matrix toolbar](#)

Specifying element type

Click an empty place in the matrix and press Enter.

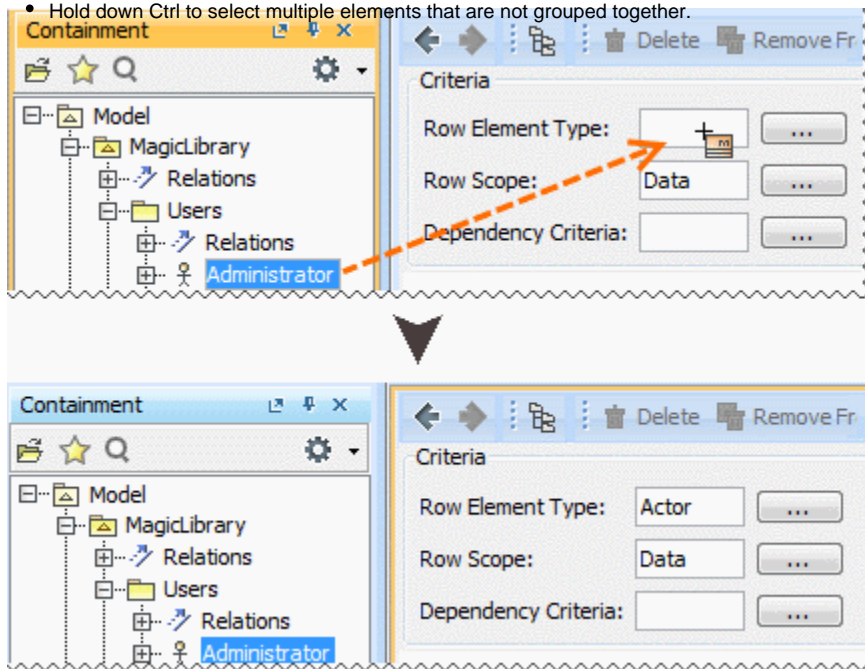
To specify a row/column element type

Do either:

- In the [Model Browser](#), select one or more elements which types you wish to see on your matrix and drag them to the **Row Element Type/Column Element Type** box in the **Criteria** area.



- Hold down Shift to select multiple elements that are grouped together.
- Hold down Ctrl to select multiple elements that are not grouped together.



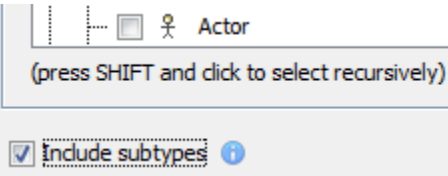
- Click the button next to the **Row Element Type/Column Element Type** box and in the opened dialog select what element types you wish to see on your matrix. Click **OK**.
- Open the matrix [Specification window](#), click the **Row Element Type/Column Element Type** property value cell, then click the button, and in the opened dialog select what element types you wish to see on your matrix. Click **Close**.



To display subtypes of selected element types, click to select the **Include subtypes** check box.

Specify

Implied relationships are displayed for the user.

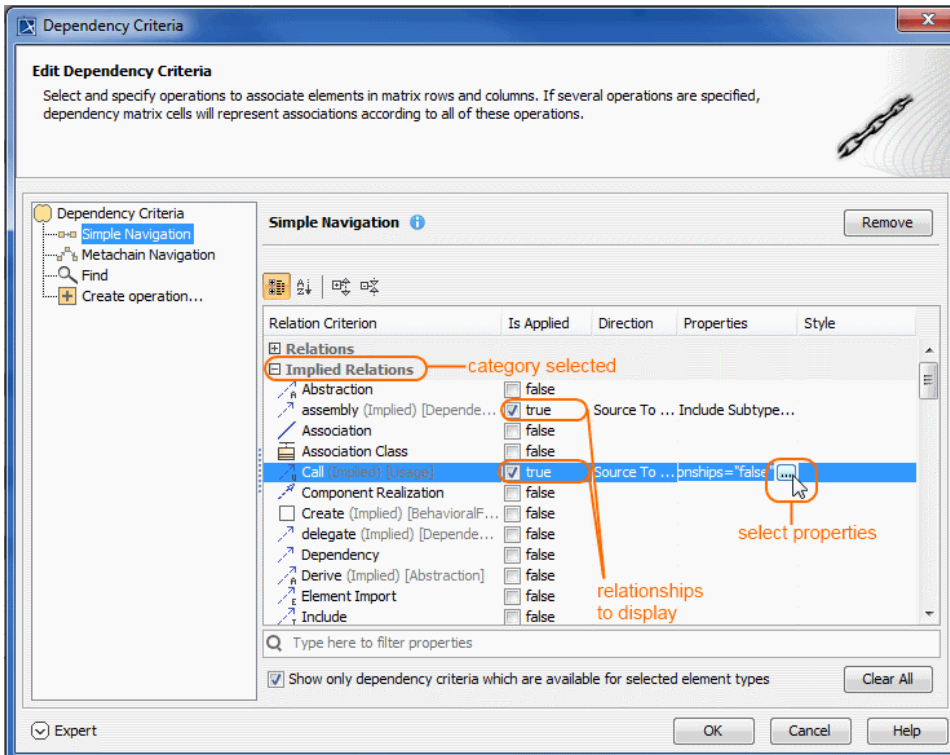



inherited or inner elements of the model element, in order to provide valuable information to

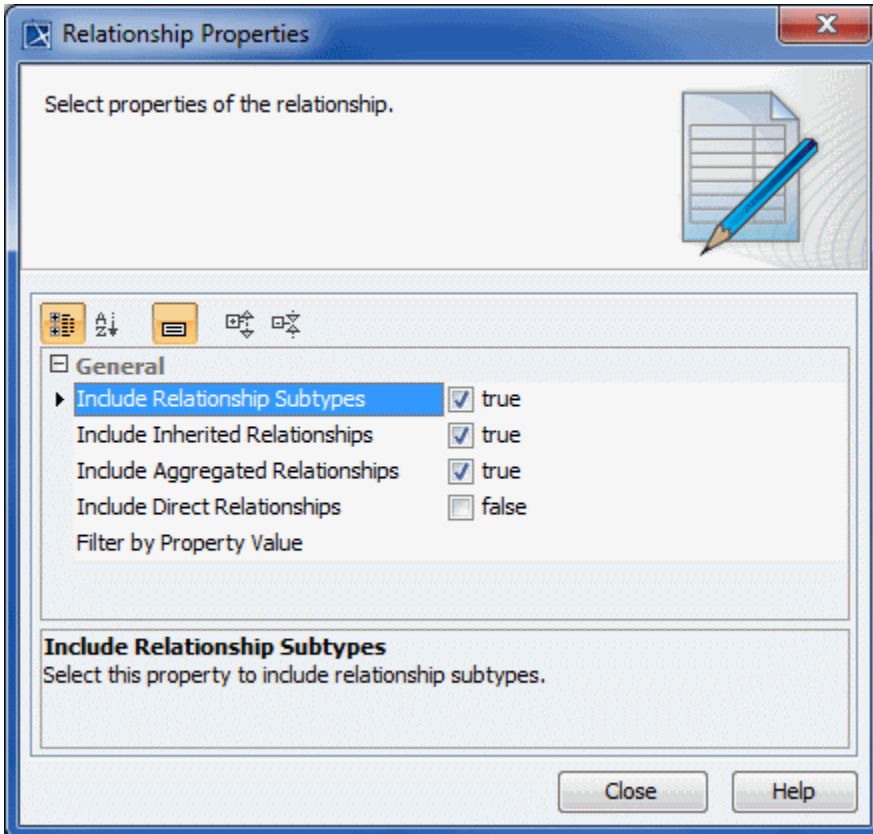
You can select to show implied relationships that represent relationships between model elements caused by aggregation and composition. When supertypes, aggregates or compositions have relationships to dependent elements, the corresponding relationships are displayed for subtypes or leaves.


To specify which implied relationships you want to display on the matrix

1. Click the  button next to **Dependency Criteria**.
2. Under **Relation Criterion**, find the **Implied Relations** category and select the relationship you want to display.



3. In the relationship's **Properties** column, click the  button to select properties of the relationship. When you're done, click **Close**.



4. In the relationship's **Style** column, click the  button to [select how the relationship is represented in the matrix](#) .
5. When you're done, click **Close**, then **OK**.

Specifying relationship direction

To specify a relationship direction

Do either:

- Select a direction from the **Direction** drop-down list in the **Criteria** area.
- Open the matrix [Specification window](#), click the **Direction** property value cell and select what direction relationships you wish to see on your matrix. Click **Close**.


Specifying what elements are visible on the matrix

To specify what elements you wish to see on the matrix: related, non-related, or all

Do either:

- From the **Show Elements** drop-down list in the **Criteria** area, select
 - **With relations** if you need to see only related elements from the selected scope.
 - **Without relations** if you need to see only non-related elements from the selected scope.
 - **All** if you need to see both related and non-related elements from the selected scope.
- Open the matrix [Specification window](#), click the **Show Elements** property value cell and choose one of the preceding described values. Click **Close**.

 After the **Show Elements** value is changed, you should always refresh a matrix.

Once criteria are specified, you can create the matrix. Click  on the [Dependency Matrix toolbar](#).

Criteria

Row Element Type: ... Column Element Type: ...

Row Scope: ... Column Scope: ...

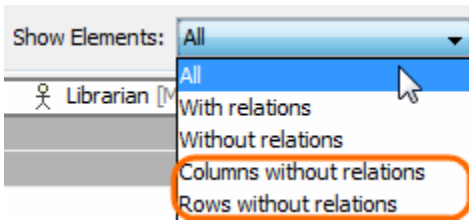
Dependency Criteria: ... Direction: Show Elements:

The dependency matrix content is outdated. [Refresh?](#) [Do not show this message again](#)

When a Dependency Matrix contains a large number of rows and/or columns, it may become difficult to work with, as you need to scroll in order to see certain parts of it. In this case, you can select to exclude cells (either rows or columns) that contain relationships and make your Dependency Matrix view more compact.

To specify what cells to display on the matrix

- From the **Show Elements** drop-down list in the **Criteria** area, select either
 - Columns without relations** – to show columns without relationships and all rows.
 - Rows without relations** – to show rows without relationships and all columns.



- Click to refresh the matrix.