

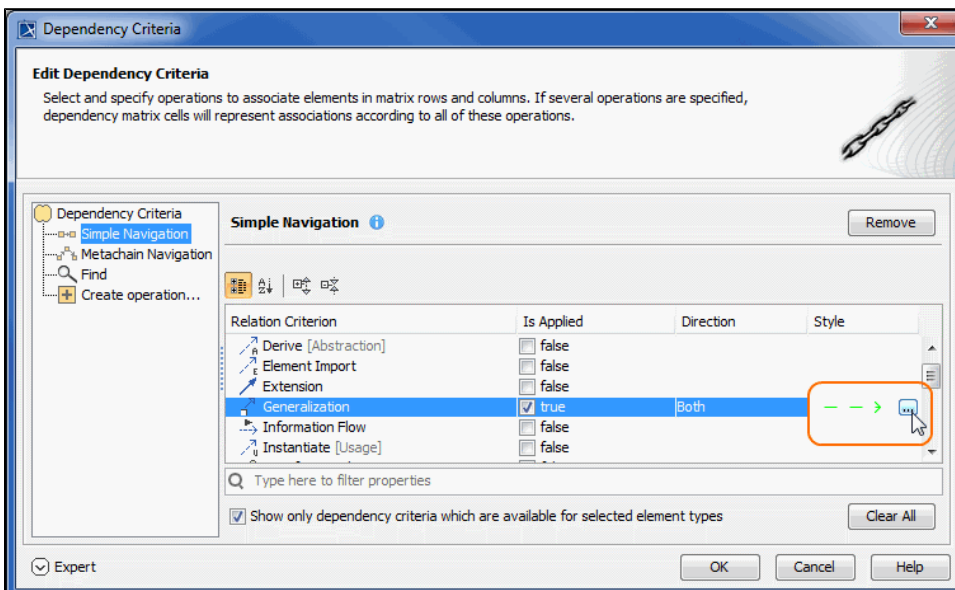


Specifying relationship line styles

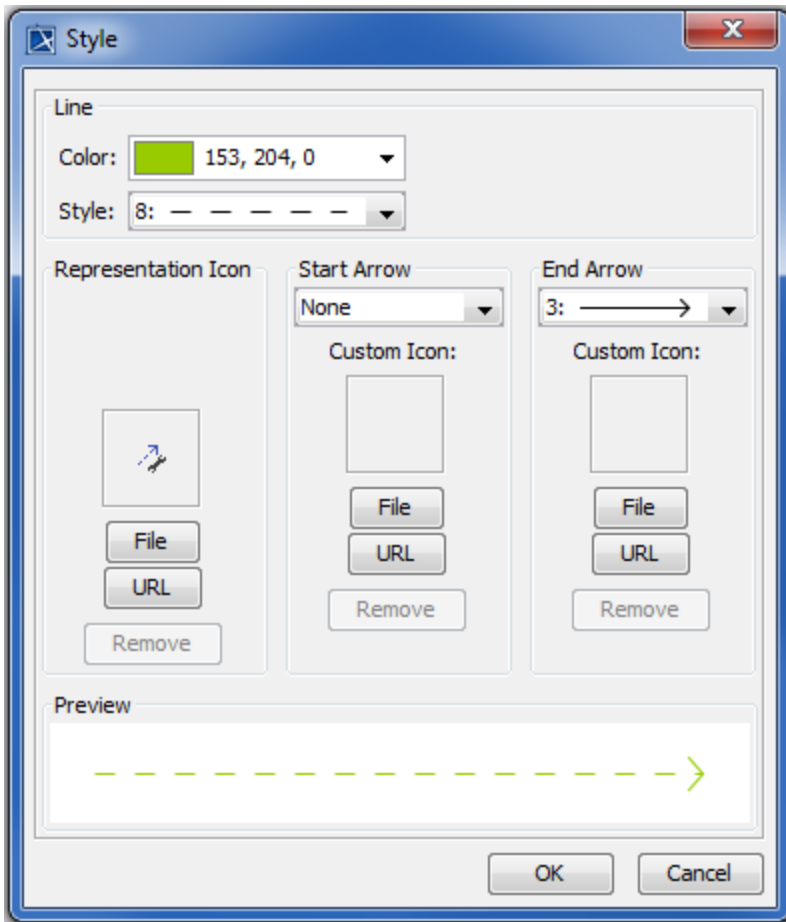
You can specify the colors and line styles to be used for representing the relationships in your dependency matrices.

To specify colors and line styles


1. Open the **Dependency Criteria** dialog by
 - double-clicking the **Legend**.
 - clicking the  button next to **Dependency Criteria** in the **Criteria** area.
2. Open the **Style** dialog by clicking the  button in the **Style** column of your selected relation criterion.

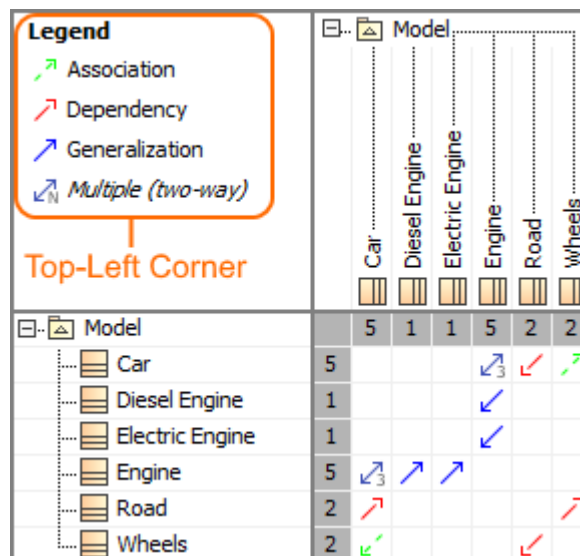


3. Change the line color and style to what you like and click **OK** when you're done.



4. When you've changed line colors and styles for all the relation criteria you needed to, click **OK** to close the **Dependency Criteria** dialog.

Your selection is shown in the customized legend in the top left corner or above of the matrix. The legend is displayed by default in all new projects, but if you don't want to see it all the time, simply click the  button in the **Dependency Matrix toolbar**, then click **Legend Location > Do Not Display**.



The legend shown in the top-left corner of the Dependency matrix.

Legend:		Association	Dependency				
		Generalization	Multiple (two-way)				
Above Column Header		<div><div>Model</div><div><div>Car</div><div>Diesel Engine</div><div>Electric Engine</div><div>Engine</div><div>Road</div><div>Wheels</div></div></div>					
<div><div>Model</div><div><div>Car</div><div>Diesel Engine</div><div>Electric Engine</div><div>Engine</div><div>Road</div><div>Wheels</div></div></div>		5	1	1	5	2	2
		5					
		1					
		1					
		5					
		2					
		2					

The legend shown above column header in the Dependency matrix.