

Validating project integrity

Some aspects are validated automatically, such as:

- Mount location inconsistencies in used projects
- Required version inconsistencies in used projects

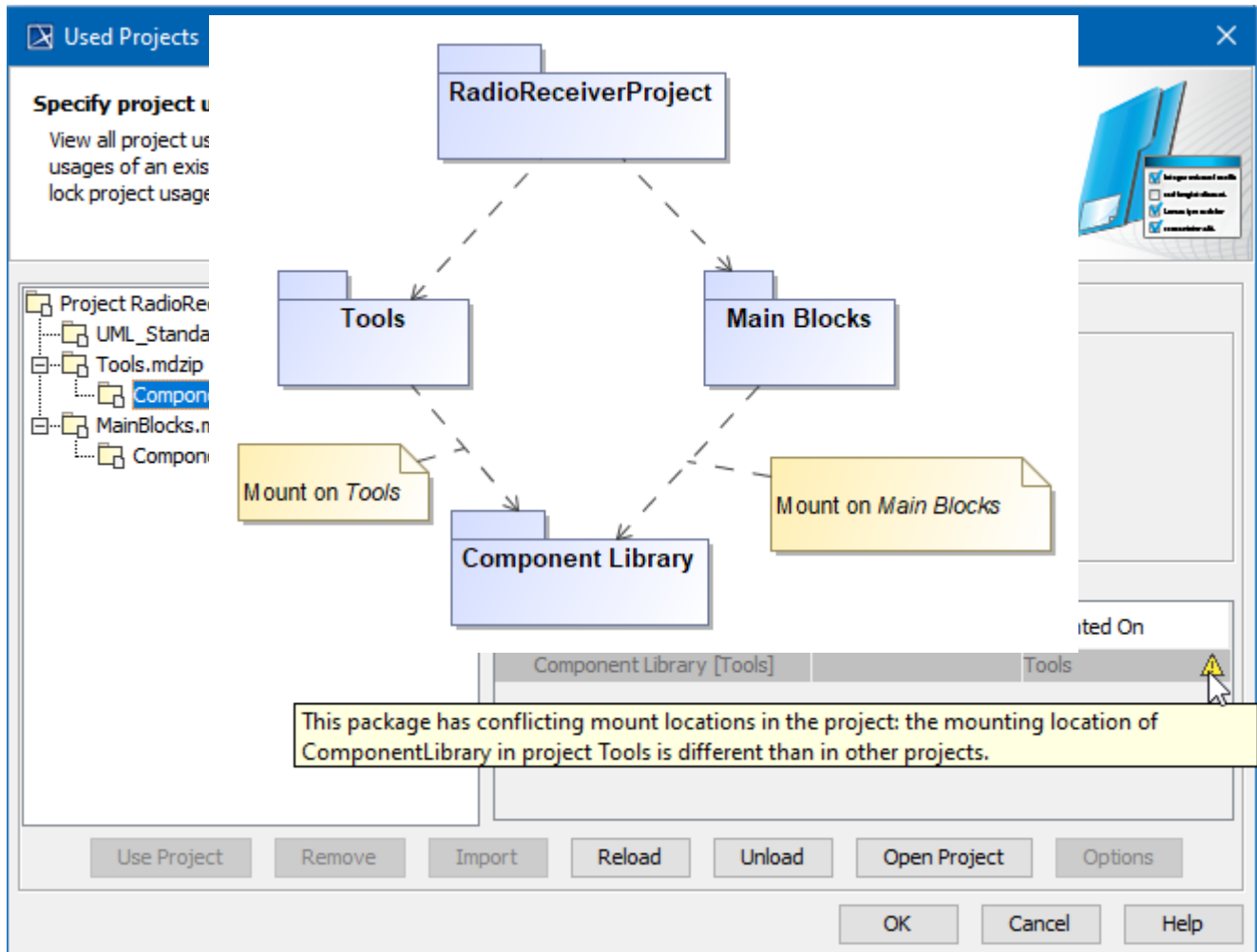
Mount location inconsistencies in used projects

This occurs when packages of the used project have different mount locations defined in separate projects.

Example

The used project *Tools* has mounted a package of the used project *ComponentLibrary*, while the used project *MainBlocks* has also mounted the same package *ComponentLibrary*. As shown in the following figure, the mount location conflict occurs because the project *RadioReceiverProject* is using both the *Tools* and *MainBlocks* used projects at the same time.

You can solve the conflict in the [Used Project dialog](#) by unifying the **Mounted On** value in both projects.



Example of conflicting mount locations warning displayed in Used Project dialog.

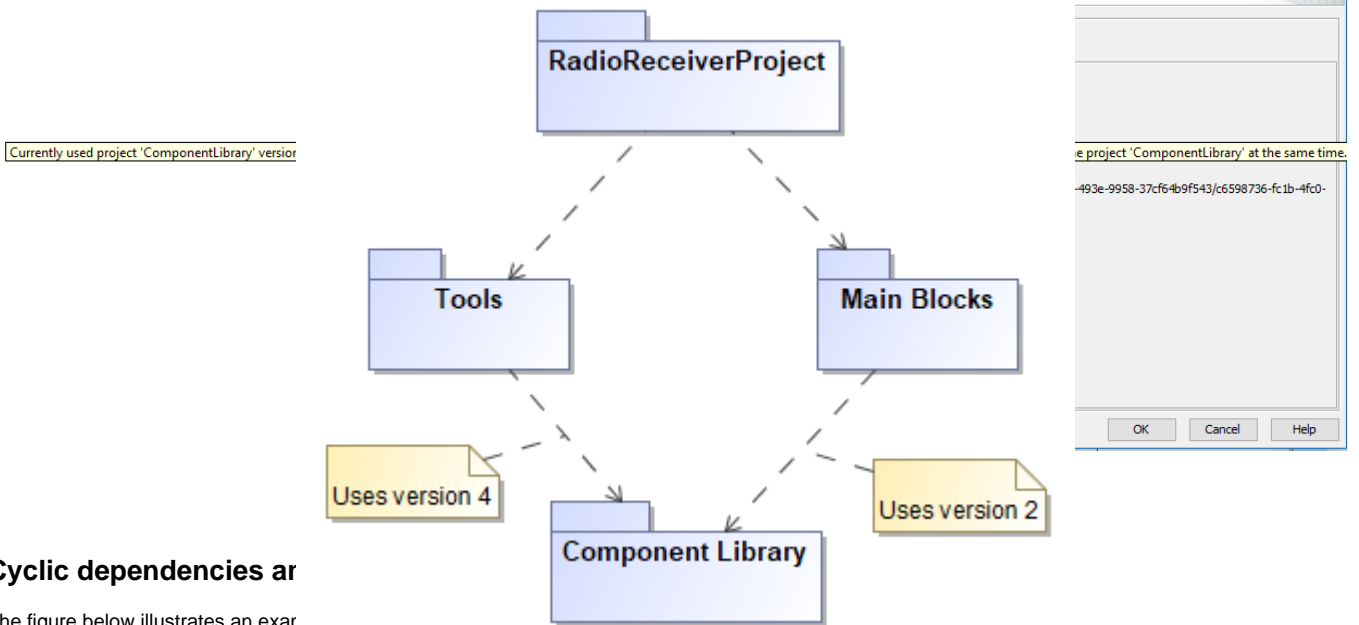
Required version inconsistencies in used projects

This occurs when a project directly and indirectly uses several different versions of the same used project at the same time.

Example

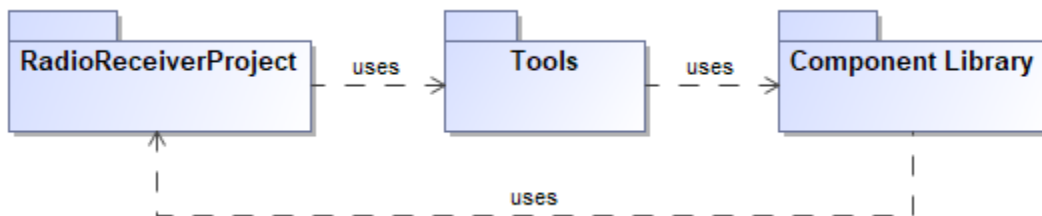
You can solve the conflict in the [Used Project dialog](#) by unifying the required versions in both projects.

The used project *Tools* is using the 4th version of the used project *ComponentLibrary* and the used project *MainBlocks* is using the 2nd version of the used project *ComponentLibrary*. In the project *RadioReceiverProject*, a used project *ComponentLibrary* version conflict occurs as two different versions of this project are required at the same time (see the following figure).



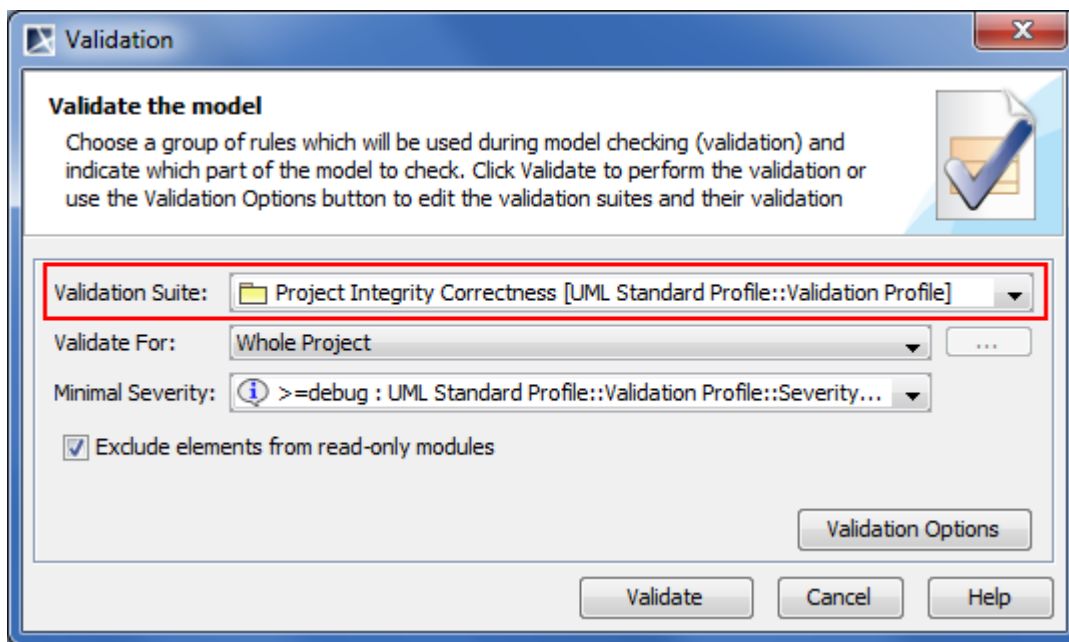
Cyclic dependencies ar

The figure below illustrates an exar



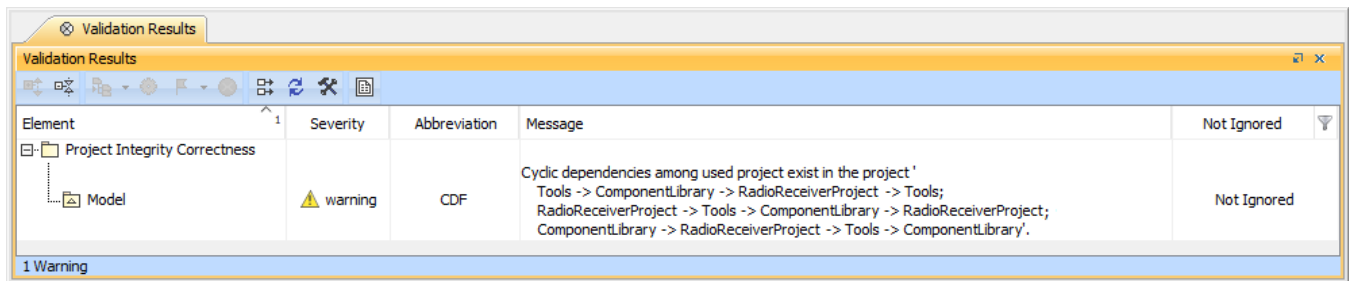
Example of cyclic dependency.

The Project Integrity Correctness suite includes the rules for **detecting** Cyclic dependencies among used projects. While **validating** the model, use the **Project Integrity Correctness** validation suite to find cyclic dependency issues in your project composition.



Project Integrity Correctness suite

Violations of your project integrity will be displayed in the [Validation Results](#) panel.



Example of violations detected while checking project integrity correctness

You can resolve the cyclic dependency issues in the [Used Project](#) dialog or you can use the [project usage map](#).

Related pages

- [Validation](#)
- [Validation Results Panel](#)
- [Project Usage Map](#)
- [Managing Used Projects](#)