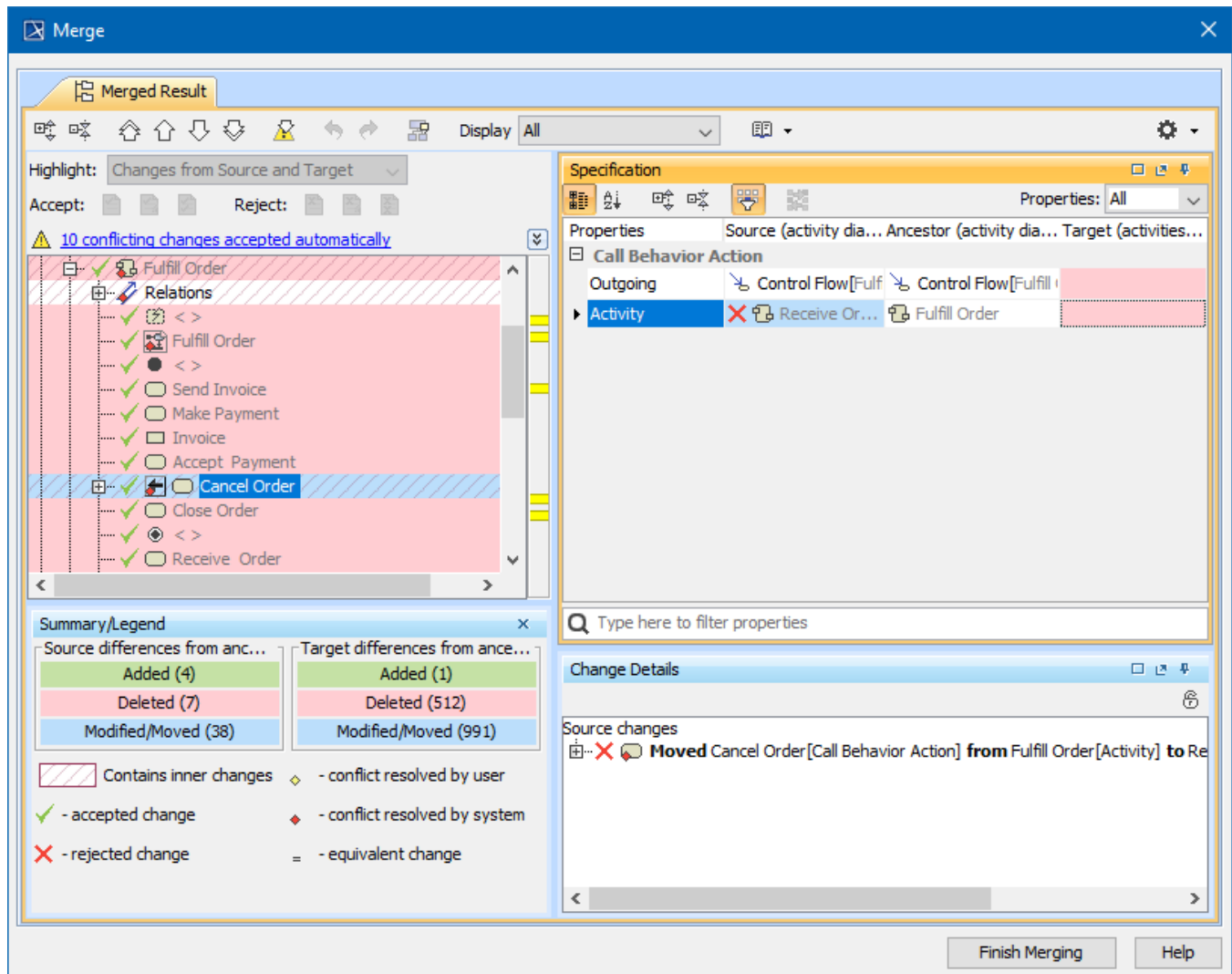


Analyzing and managing merge results



Example of the Merge window.

Merge results are displayed in the **Merge** window.

Read about analyzing and managing model merge results in

- [Getting merge summary information and changes legend](#)
- [Understanding content of the Merged Result tree](#)
- [Inspecting element property changes in the Specification panel](#)
- [Inspecting changes in the Change details panel](#)
- [Displaying and navigating through changes](#)
- [Quickly navigating through conflicting changes](#)
- [Accepting and rejecting changes](#)
- [Viewing and analyzing changes of modified diagrams](#)
- [Generating a differences report](#)

If you do not need to perform the analysis and management of merge results, proceed to [Finishing merge](#).