

# C++ Code Engineering

## References

- <https://isocpp.org/std/the-standard>
- [ECMA-372 C++/CLI Language Specification](#)

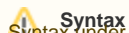
## Demo

### C++ Code Engineering

## Supported dialects

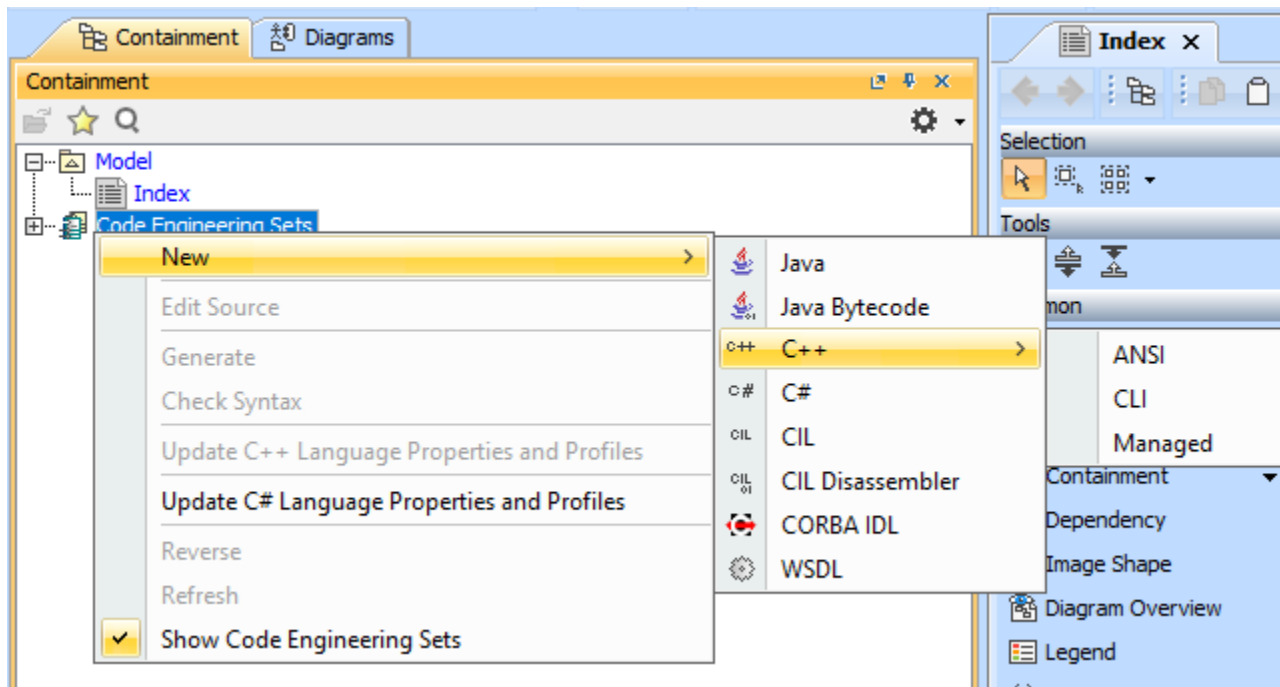
C++ code engineering supports three dialects, set in our modelling tools:

- ANSI – conform to ISO/IEC 14882 specification for C++ programming language
- CLI – conform to ECMA-372 C++/CLI Language Specification base on Microsoft Visual studio 2005
- Managed – conform to Managed Extensions for C++ Specification introduced in Microsoft Visual Studio 2003



### Syntax

Syntax under the Managed dialect is deprecated in Microsoft Visual studio 2005.



New dialects in C++ CE

## Related pages:



Unknown macro: 'list-children'