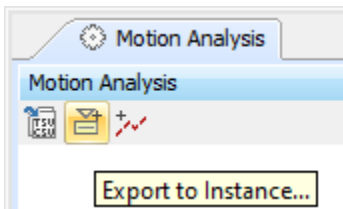


# Exporting plots data to an instance model

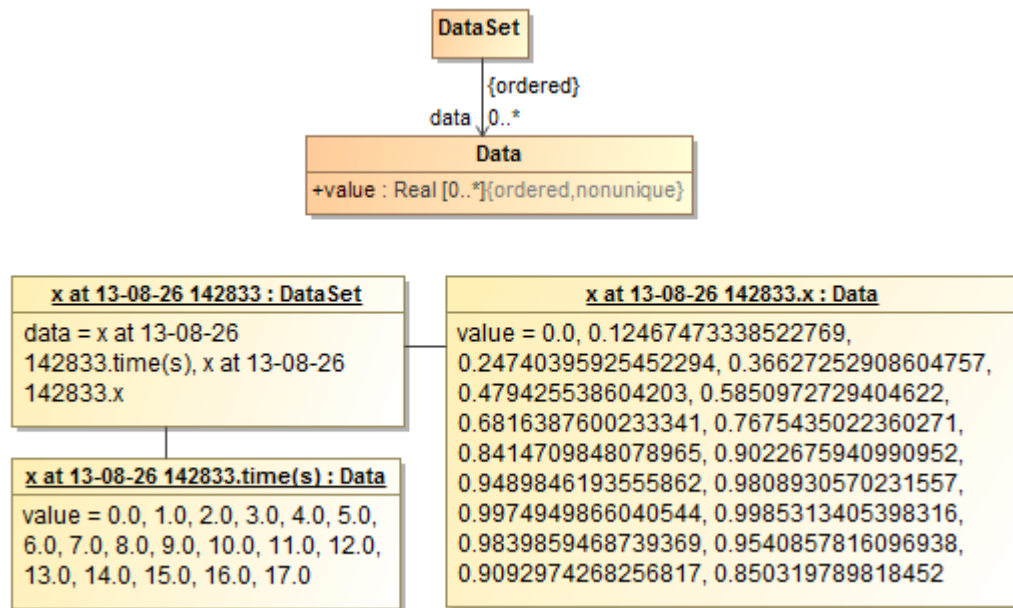
Cameo Simulation Toolkit also allows you to export plots data in a Time series chart to an Instance model. The model for exported plots data in the simulation profile comprises of DataSet and Data Classes. Whenever you export plots data to an instance model, Cameo Simulation Toolkit will create an InstanceSpecification of a DataSet Class. The slot of a data property will contain a list of InstanceSpecifications of the Data Class. The first instance on the list is an InstanceSpecification containing the time values while the second one is an InstanceSpecification containing the values that appear on the vertical axis of the first plot. If a Time series chart has more than one plot, the third InstanceSpecification on the list will be an InstanceSpecification containing the values of the second plot and so on.

To export plots data to an instance model

1. Click the **Export to Instance** toolbar button of the Time series chart's panel whose values you want to export. The **Element Selection** dialog will open.



2. Select a package that will own the instance model you want to create.
3. Click the **OK** button. Cameo Simulation Toolkit will create the instance model containing the plots data in a Time Series Chart as shown in the following figure

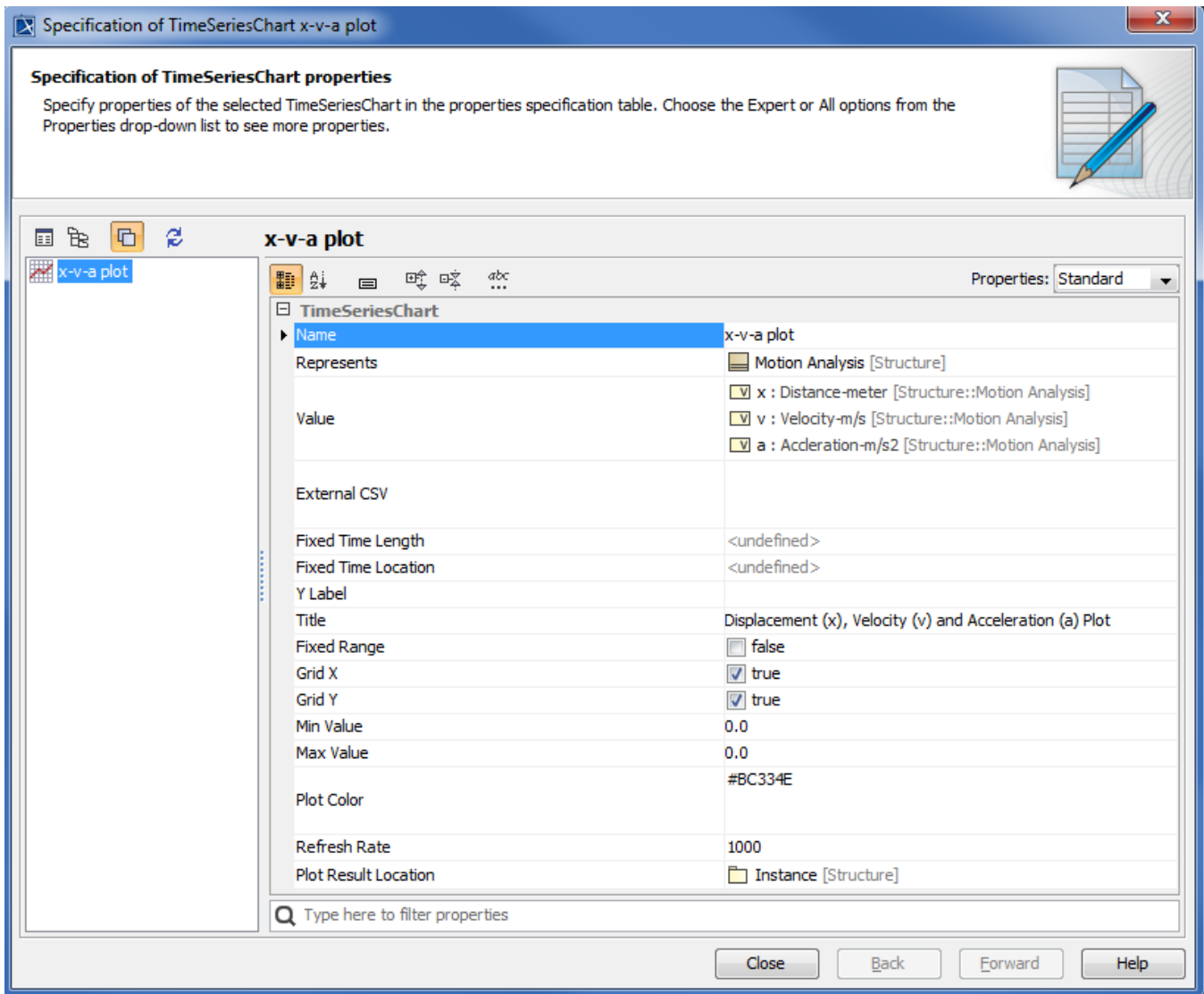



The instance model containing the plots data in a Time series chart.

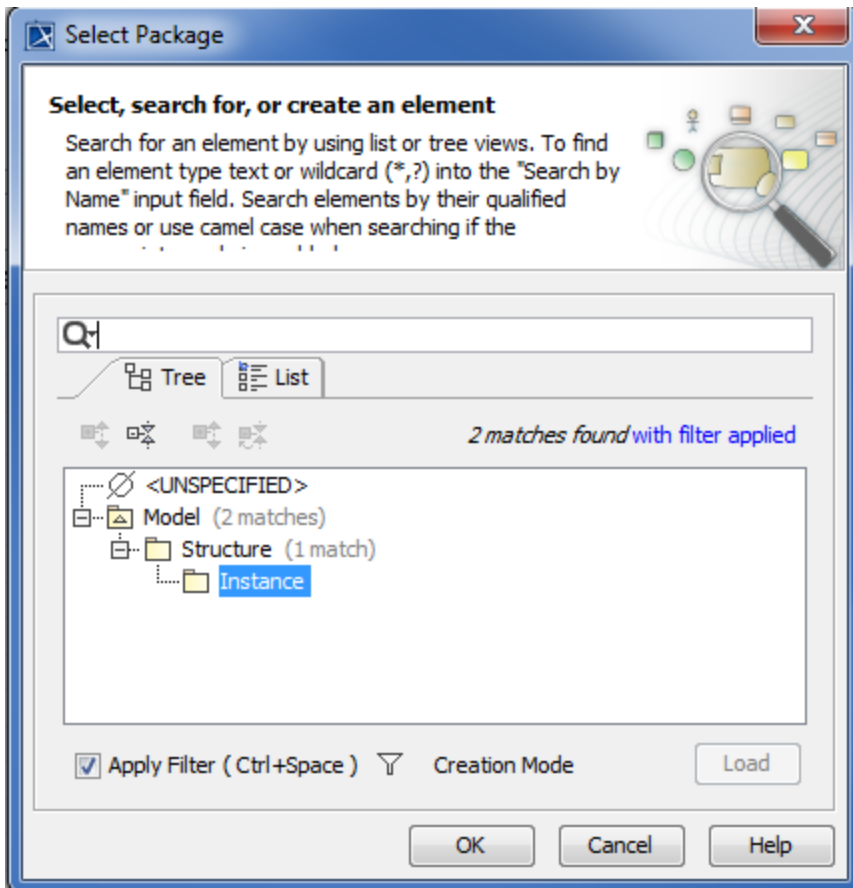
To auto-save plot values into model on every simulation run

1. Do one of the following
  - Double-click the Time series chart.
  - Right-click the Time series chart and select **Specification**.

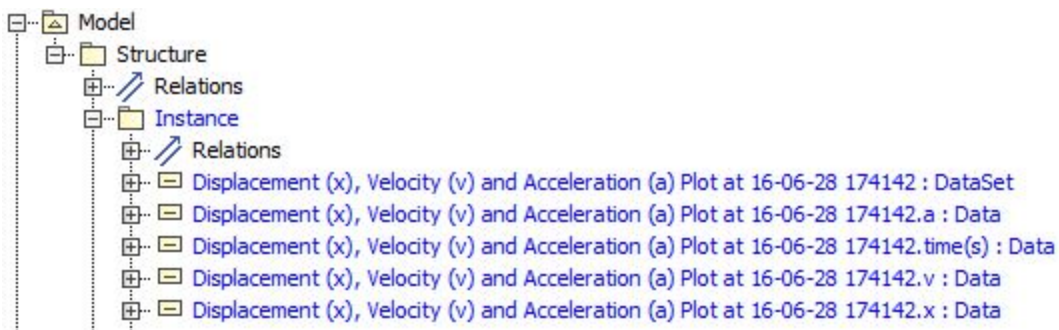
The Specification window will open as follows



2. Click the  button beside the **Plot Result Location** property to edit its value. The **Plot Result Location** property value takes the name of the **Instance** to save the values, as in the following figure



3. Start the simulation. When the simulation terminates, the plot values will be written to the **Instance specification** selected in the previous step, as in the following figure



#### Related pages

- [Exporting plots data](#)
- [Exporting plots data to a CSV file](#)