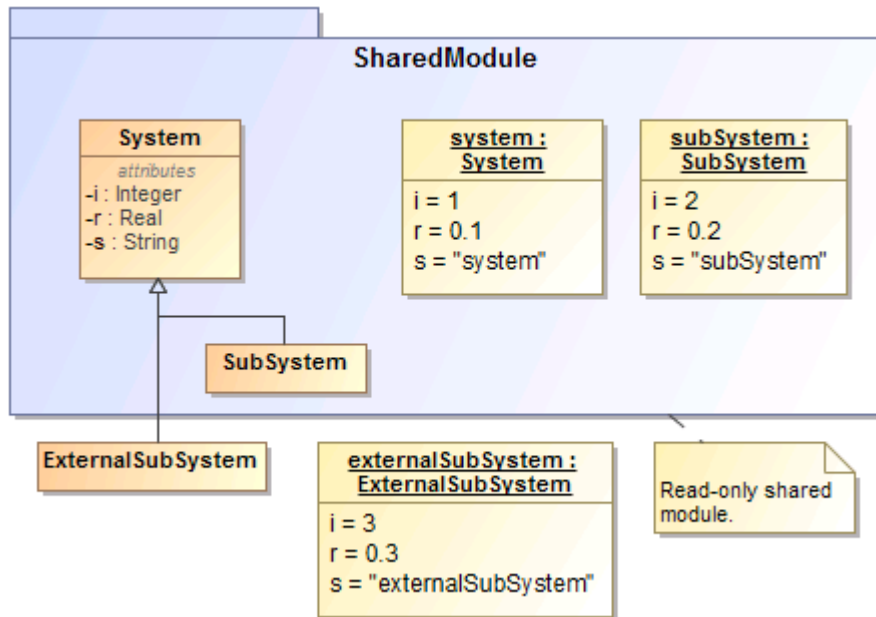


Updating default values

When an object acquires the properties of another, there is an inheritance relationship between them. The object that inherits the properties is called Subtype or Subclass (child) and the inheriting object is called Supertype or Class (parent). This inheritance relationship allows the child and the parent to have identical properties. If the property has a value, the Subclass will also inherit the value. Cameo Simulation Toolkit allows you to change the default value of an object or a Subtype whose property is defined in the Supertype or a read-only property. You can override this existing value in the subtype without changing the default value of the property of the Supertype by creating a redefine property of the subtype that represents the default values. The value of the property can be integer, real, or string.

When you change the inherited value in the subtype, e.g., from 2 to 3, in the **Variables** pane, the simulation will initiate at 3.

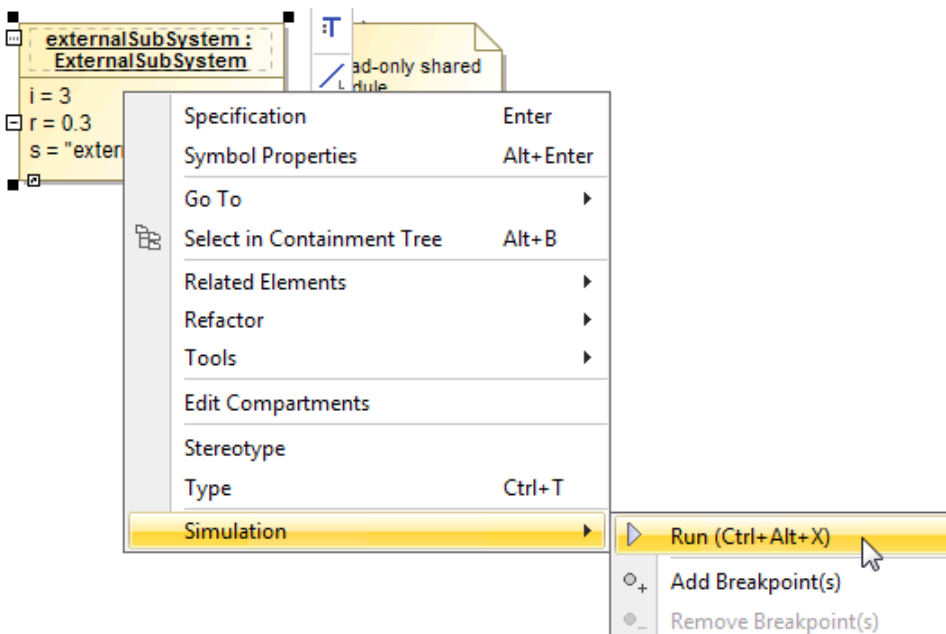
This example uses the model depicted in to show you how to update default values to an inherited and/or read-only property by creating redefined properties as follows



Inherited and read-only Properties of a Subtype.

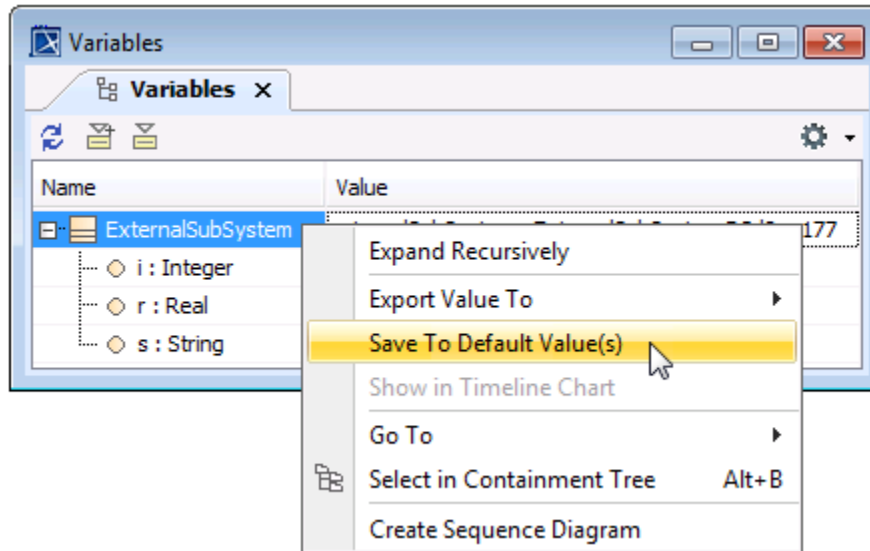
To update default value(s) from an Instance Specification

1. Run a simulation on your model as follows

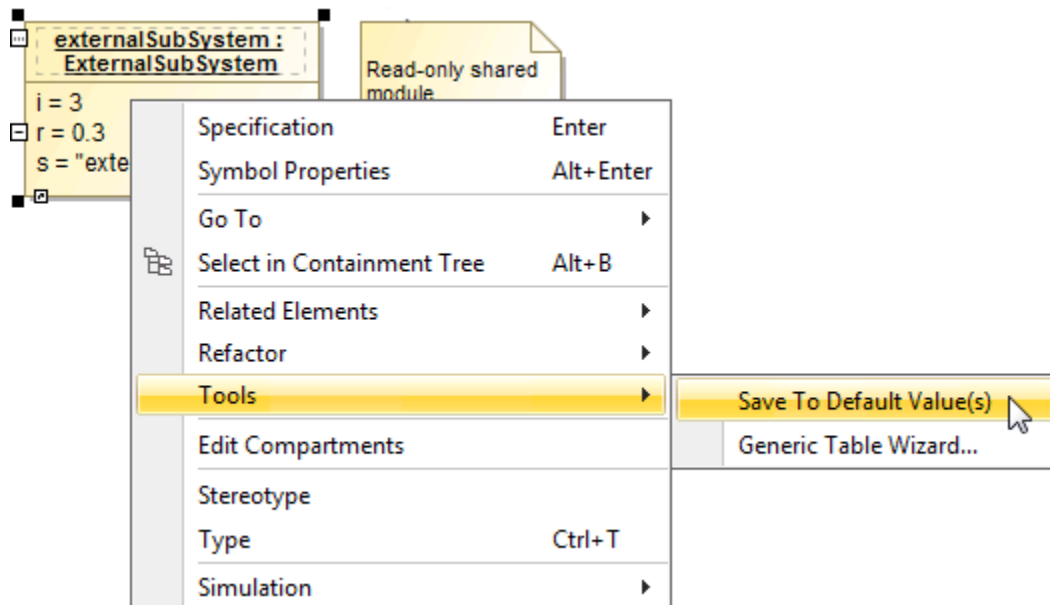


2. Do one of the following

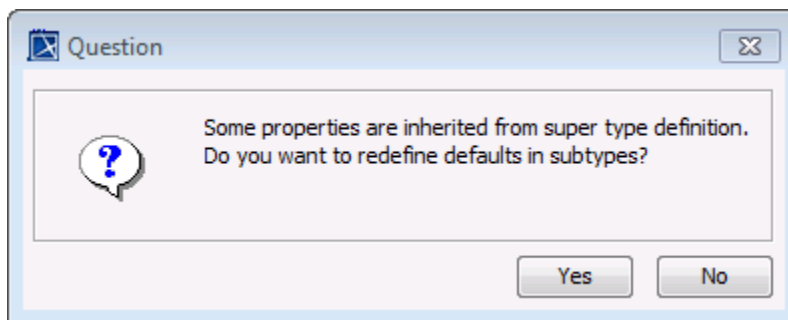
- Right-click the Instance of the Class (ExternalSubSystem in this example) on the **Variable** pane and select **Save ToDefault Value(s)**.



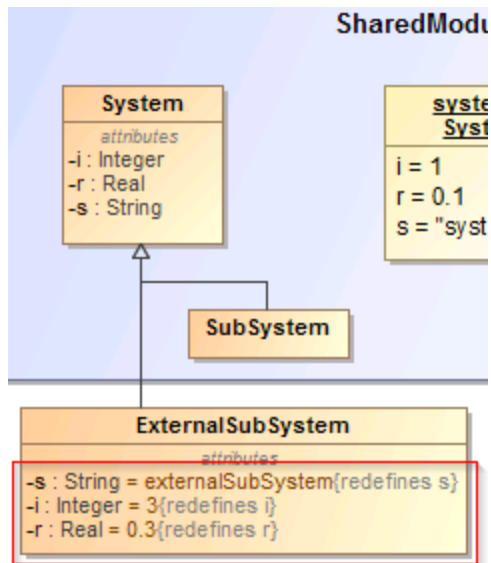
- Right-click the Instance of the Class (ExternalSubSystem in this example) on the diagram pane and select **Tools > Save ToDefault Value(s)**.



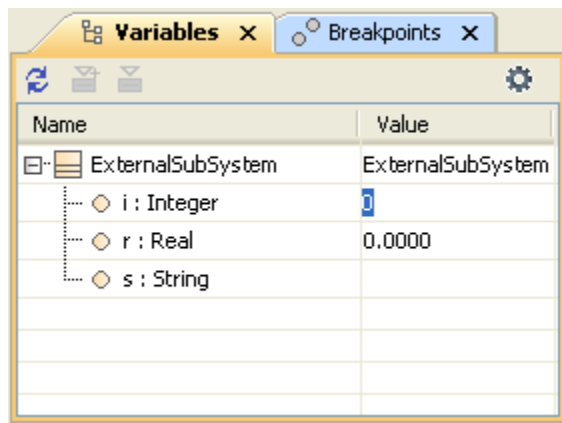
- A **Question** dialog will open asking if you want to redefine the values in the Subtype. Click **Yes**.



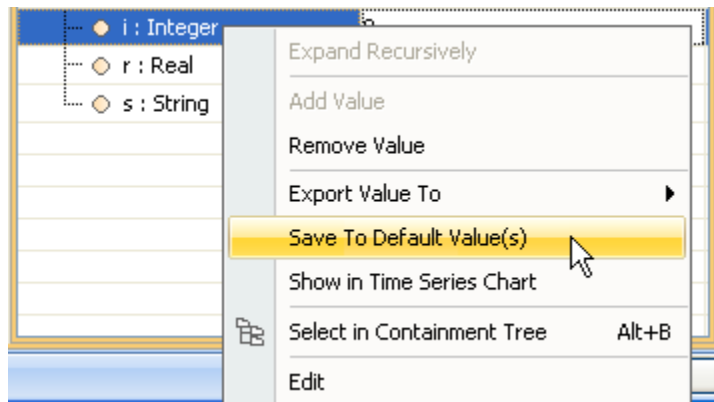
Cameo Simulation Toolkit will create new redefined properties for the ExternalSubSystem (i, r, and s), and save the default values (i = 0, r = 0.0000, and s = null) to the new properties.



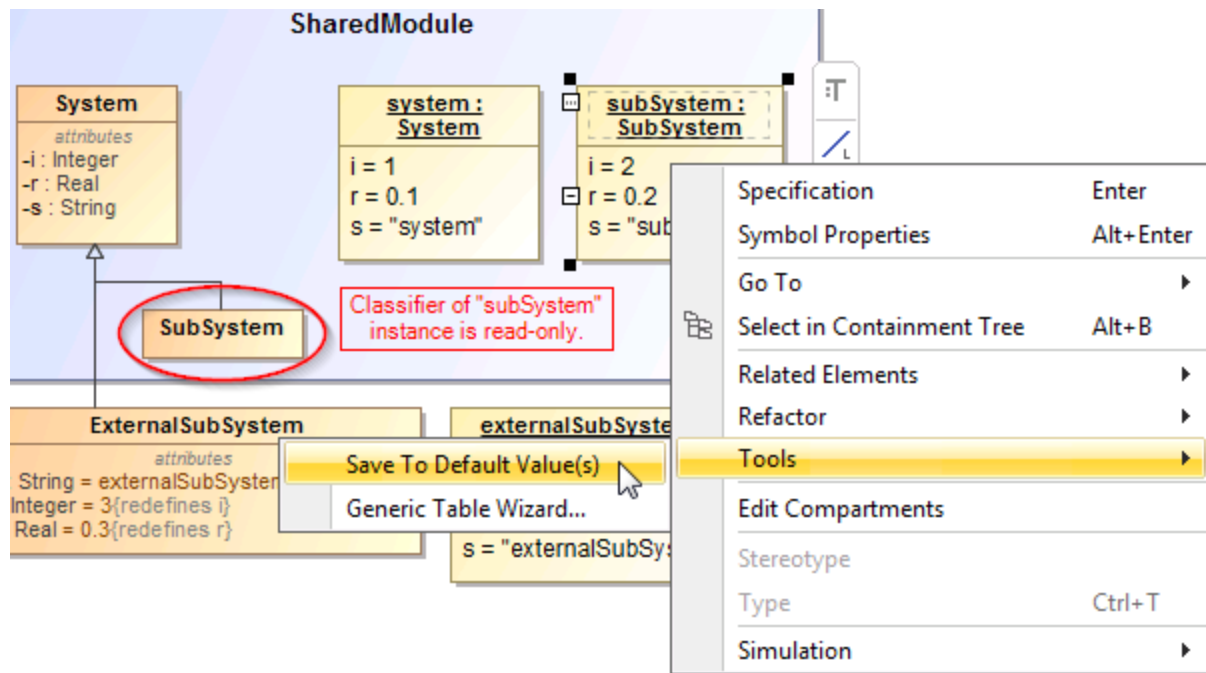
4. On the **Variables** pane, change the default value of property `i`, `r`, and `s` of **ExternalSubSystem**.



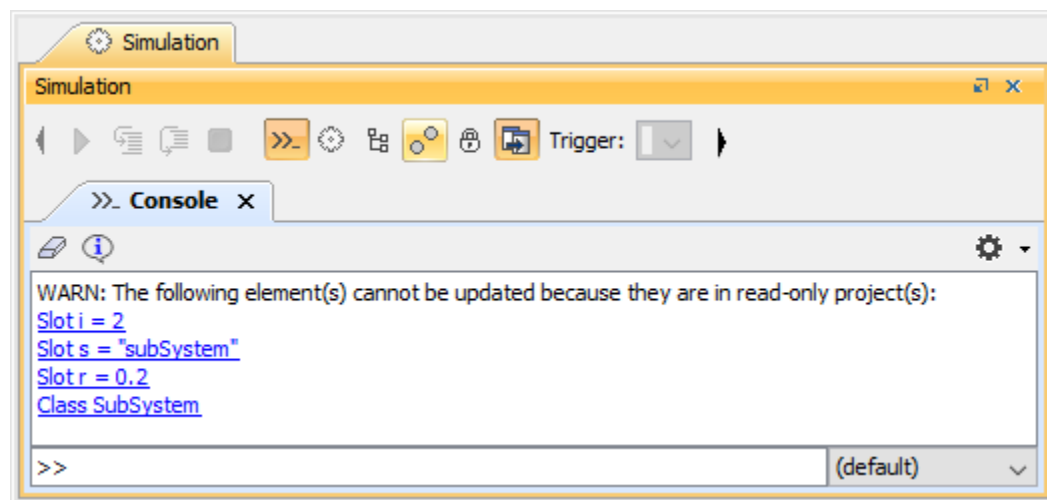
5. Each time you finish updating the value, right-click the property in the **Variables** pane and select **Save To Default Value(s)**.



6. If the Subtype Instance is read-only, you need to click the Classifier and select **Tools > SaveTo Default Value(s)**.



If Cameo Simulation Toolkit cannot create redefined properties, a warning message will appear.



Related page

- [Redefine](#)