

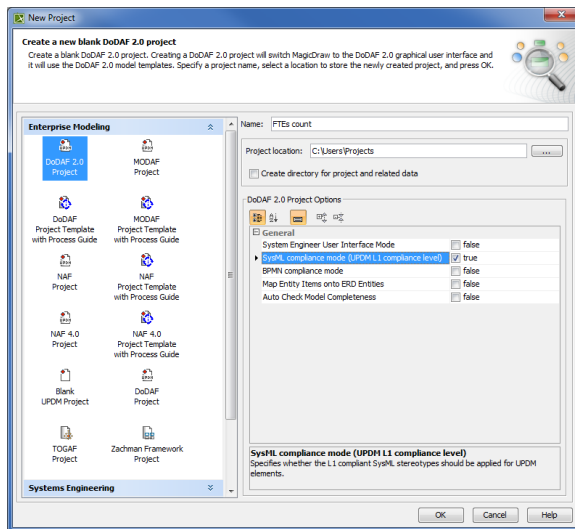
# Using SysML Compliance Mode

You can use SysML capabilities in your UPDM model. For that purpose you can enable the SysML compliance mode in one of the following ways:

- Enable the SysML compliance mode while creating a new project.
- Enable the SysML compliance mode after the project is created.

To enable SysML compliance mode while creating a new project

1. Click **File > New Project**. The **New Project** dialog opens.
2. Select project template, specify its name, and location.
3. In the **<project template> Project Options** area, set the **SysML compliance mode (UPDM L1 compliance level)** property value to *true*.
4. Click **OK**, when you are done.



## Related procedures

- [Using SysML elements in UPDM 2 plugin](#)

To turn on SysML compliance mode after the project is created

1. Click **Options > Project**. The **Project Options** dialog opens.
2. Select **General > UPDM**.
3. In the **UPDM** property group, set the **SysML compliance mode (UPDM L1 compliance level)** property value to *true*.

**i** You can use the Quick filter box to find the **SysML compliance mode (UPDM L1 compliance level)** property more quickly. Simply start typing the property name in the Quick filter box.

4. Click **OK**.

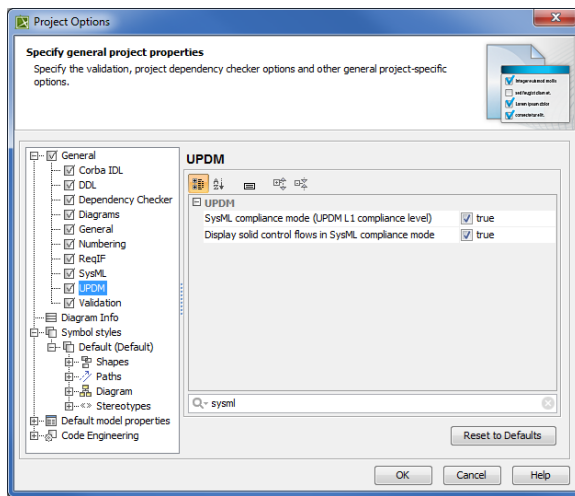
When the SysML compliance mode is turned on, control flows are represented as dashed line in activity based diagrams. You can change the representation style to the solid line.

To change the representation to the solid line

1. Click **Options > Project**. The **Project Options** dialog opens.
2. Select **General > UPDM**.
3. In the **UPDM** properties group, set the **Display solid control flows in SysML compliance mode** property value to *true*.

**i** You can use the Quick filter box to find the **Display solid control flows in SysML compliance mode** property more quickly. Simply start typing the property name in the Quick filter box.

4. Click **OK**.

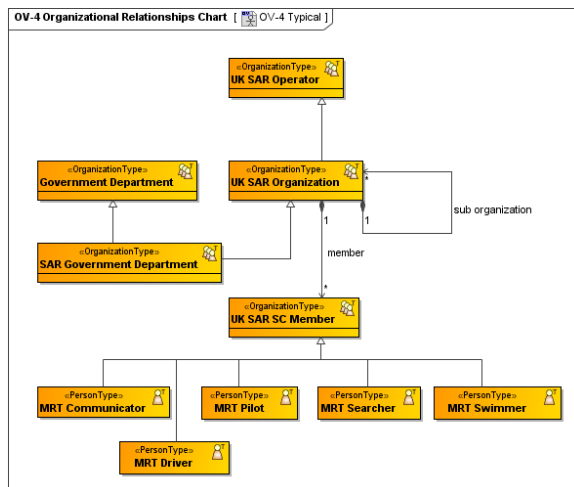


## Case Study

The following example describes the actual situation, how you can use the SysML compliance mode in the UPDM model.

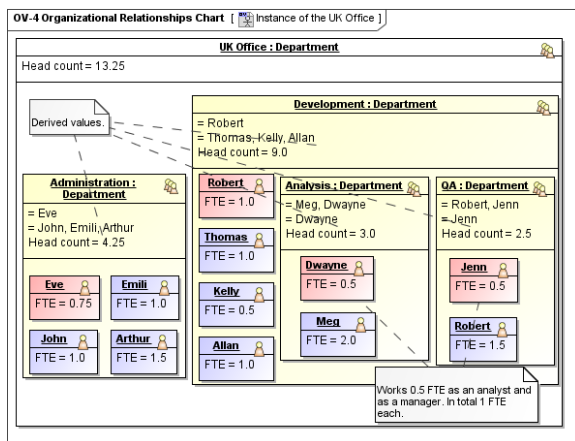
Let us say, we need to describe a full-time equivalent (FTE) calculations in the UPDM model.

First, we need to create the typical organizational structure using OV-4 Organizational Relationship Chart diagram. The typical organizational structure defines types of departments and roles and how they are associated together in the modeled enterprise. The Department can contain any number of Employees and any number of sub Departments.

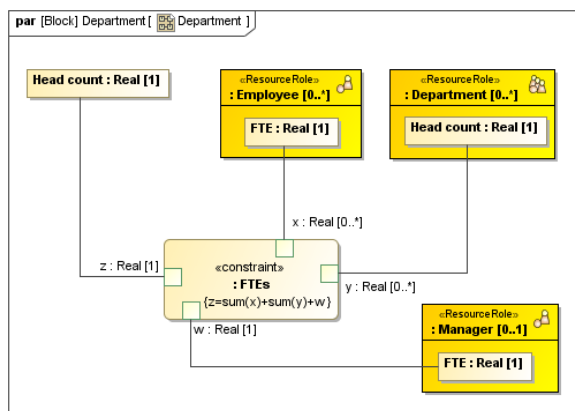


Secondly, we generate an actual organizational chart based on the typical organizational chart (see [Instantiating Structures](#)). An actual organizational chart shows concrete departments and residing employees.

Each employee works a certain number of FTEs.



Thirdly, we can use the SysML Parametric Diagram to describe the recursive FTE's calculation for the selected department and each residing sub-department.



You can execute the described calculations using Cameo Simulation Toolkit.