

MODAF. SOV-2 Service Interface Specification

Description

The purpose of the Service Interface Specification View (SOV-2) is to define the interfaces presented by a service. A Service presents one or more interfaces to consumers (a "consumer" being any agent capable of using the service – a person, an organization, a system or another service). In this case, the architect specifies the provided interfaces. A service may also be capable of using interfaces exposed by other services, and the architect may specify these as used interfaces.

Implementation

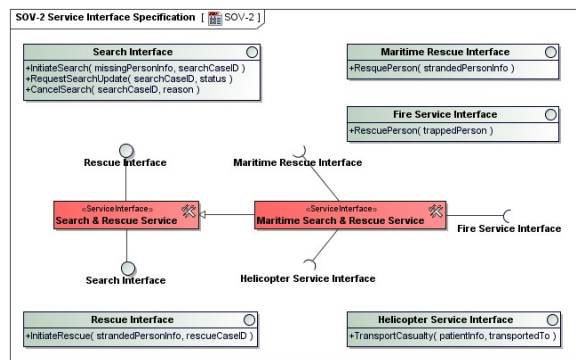
SOV-2 can be represented using

- A report which is automatically generated from all data
- A SOV-2 diagram which is based on the UML Class diagram

Related elements

- Service Interface
- Service Operation
- Service Attribute
- Service Parameter
- Service
- Request

Sample



SOV-2 Service Interface Specification