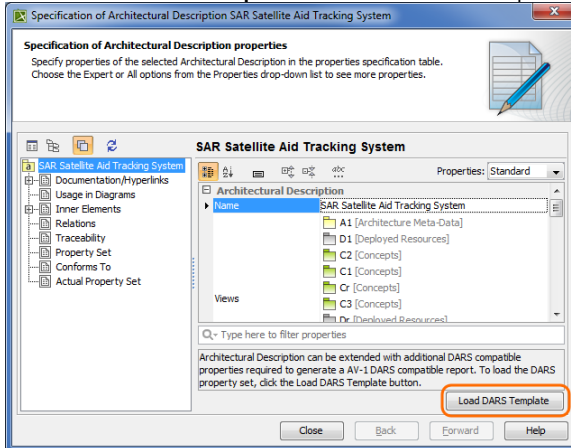


# Generating DARS report in A1

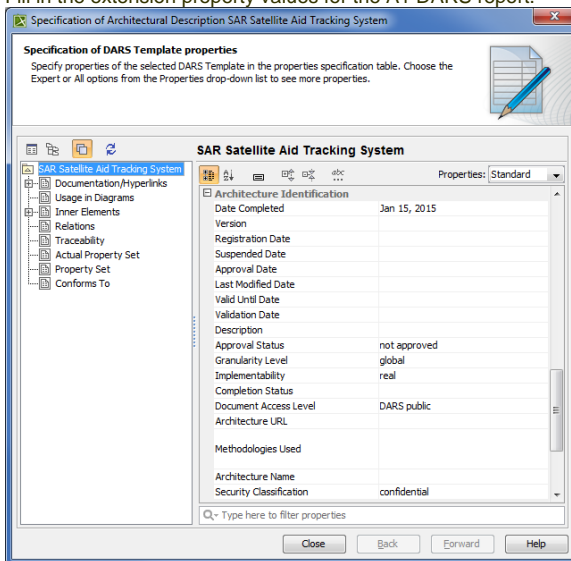
Before generating an A1 DARS report, you must load the DARS template in A1 diagram and provide the template with relevant data.

To load the DARS template in A1

1. Select the Architecture Description from the Containment tree and open its Specification window.
2. Click the **Load DARS Template** button to load DARS template.



3. Fill in the extension property values for the A1 DARS report.



To generate DARS report use standard [Generating document based reports](#) procedure.