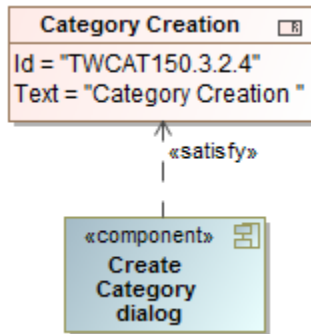


# Satisfy

A 'Satisfy' relationship is a dependency between a requirement and a model element that fulfills that requirement. As with other dependencies, the arrow direction points from the satisfying (client) model element to the (supplier) requirement that is satisfied.



## Related diagrams

- [Requirement Diagram](#)
- [Requirement Table](#)
- [Satisfy Requirement Matrix](#)