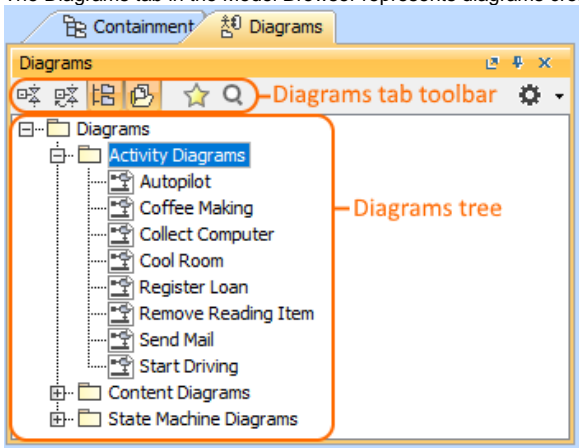


# Diagrams tab

The Diagrams tab in the Model Browser represents diagrams created in your project.



Just diagrams grouped by types that are used in your project are listed in the **Diagrams** tab in the Model Browser, not all diagram types as it was in earlier versions.

To open the Diagrams tab, do one of the following

- At the top of the Model Browser, click the **Diagrams** tab.
- If the Diagrams tab is hidden, from the **Window** menu, select **Diagrams**.



You can change some Diagrams tab properties in the [Environment Options](#) dialog the **Browser** options group.

The Diagrams tab consists of the following two components:

- Diagrams tab toolbar
- Diagrams tree

## Diagrams tab toolbar

The Diagrams tab toolbar contains the following button:

Button	Tooltip text	Description
	Group by Diagram Type	Groups diagrams into packages by diagram types.
	Group by Diagram Name	Groups diagrams into packages by the first symbol of their name, when the model contains more than 99 diagrams.
	Favorites	Opens the Favorites menu for choosing to do one of the following: <ul style="list-style-type: none"><li>• Add a selected element to favorites</li><li>• Open the dialog for managing favorites</li><li>• Navigate to a desired favorite in the Containment tree</li></ul>
	Quick Find	Opens the <b>Quick Find</b> dialog.

The same action you may perform using the shortcut menu of the Diagrams tree.

## Working with model elements in the Diagrams tree

You can work with diagrams in the Diagrams tree using the commands available from the selected diagram's shortcut menu. The shortcut menu contains the following commands:

### On this page

- [Diagrams tab toolbar](#)
- [Working with model elements in the Diagrams tree](#)

### Related pages

- [Model Browser](#)
  - [Using the Model Browser](#)
  - [Containment tab](#)
  - [Structure tab](#)
  - [Documentation tab](#)
  - [Inheritance tab](#)
  - [Lock View tab](#)
  - [Model Extensions tab](#)
  - [Properties tab](#)
  - [Search Results tab](#)
  - [Working with model elements in the Model Browser](#)
  - [Zoom tab](#)

Command	Function
<b>Open</b>	Opens the selected diagram.
<b>Print</b>	Opens the <b>Print</b> dialog.
<b>Group by Diagram Type</b>	Groups diagrams into the packages according to the diagram type.
<b>Select in Containment Tree</b>	Opens the Containment tab and selects the current element in the Containment tree.