

# Complex Gateway

## Description

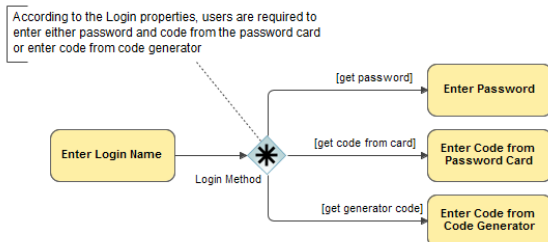
A Complex Gateway can be used to model complex synchronization behavior. An Activation Condition is the Complex Gateway's property, which is used to describe precise behavior.

## Notation



## Example

The activation condition specifies that tokens on three out of five incoming sequence flows are needed to activate the gateway. Which token the Gateway will produce is determined by the conditions on the outgoing sequence flow as in the split behavior of an Inclusive Gateway



Complex Gateway

## Related elements

- [Gateways](#)
- [Sequence Flow](#)

## Related diagrams

- [BPMN Process Diagram](#)
- [BPMN Collaboration Diagram](#)
- [BPMN Choreography Diagram](#)

## Related procedure

- [Creating and Using a Sequence Flow](#)