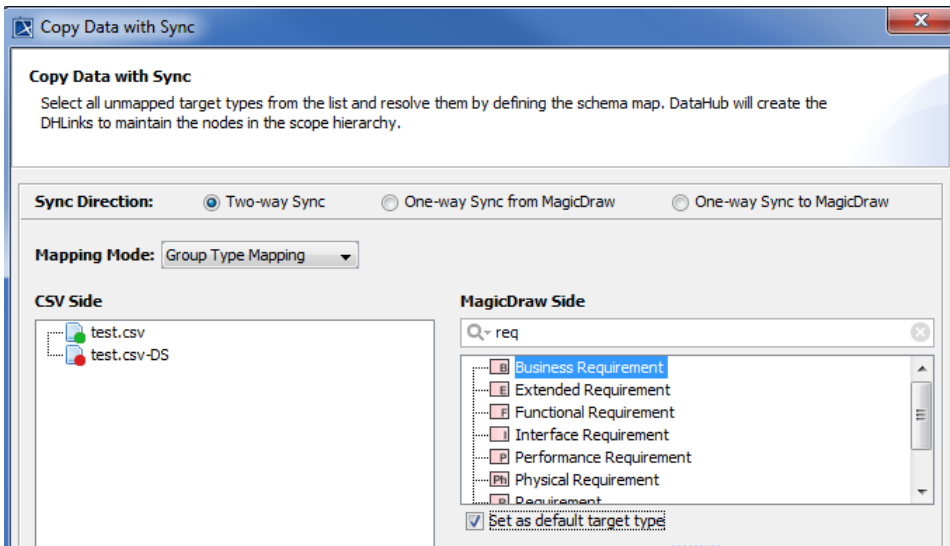


Defining a target type from an attribute value

The functionality of synchronization has been additionally simplified with use of the **Define Target Type from Attribute Value** option. The synchronization does not limit only to a simple type-to-type-mapping and attribute-to-attribute mapping but also a target node type can be defined dynamically according to a specified attribute value.

To copy data and define a target node type from an attribute value

1. From the **Operation** drop-down list in DataHub Explorer, select one of the DataHub operations to copy data. The **Copy Data with Sync** dialog (depending on the operation you have selected) opens.
2. From the **Mapping Mode** option, select **Group Type Mapping**.



3. Select a source node type to start mapping.
4. Select the ☐ **Define Target Type from Attribute Value** check box.

Copy Data with Sync

Select all unmapped target types from the list and resolve them by defining the schema map. DataHub will create the DHLinks to maintain the nodes in the scope hierarchy.

Sync Direction: ☒ Two-way Sync ☐ One-way Sync from MagicDraw ☐ One-way Sync to MagicDraw

Mapping Mode: Group Type Mapping

CSV Side

- test.csv
- test.csv-DS

☐ Exclude all non-mapped nodes from DHLinks.

☒ Define Target Type from Attribute Value

Attribute: Name

Default	Priority	Value	Target
<input checked="" type="checkbox"/>		Name	
<input type="checkbox"/>		Surname	
<input type="checkbox"/>		Position	

MagicDraw Side

Search: req

☐ Set as default target type

Select Attribute to Sync

test.csv [CSV:....	Business Requi...	Conversion Rule

OK Cancel

- From the **Attribute** drop-down list, choose an attribute to define a target node type.
- Specify the attribute value to do the mapping.



Information

If the attribute is **Enumeration**, you can select a value from the **Value** drop-down list for each attribute.

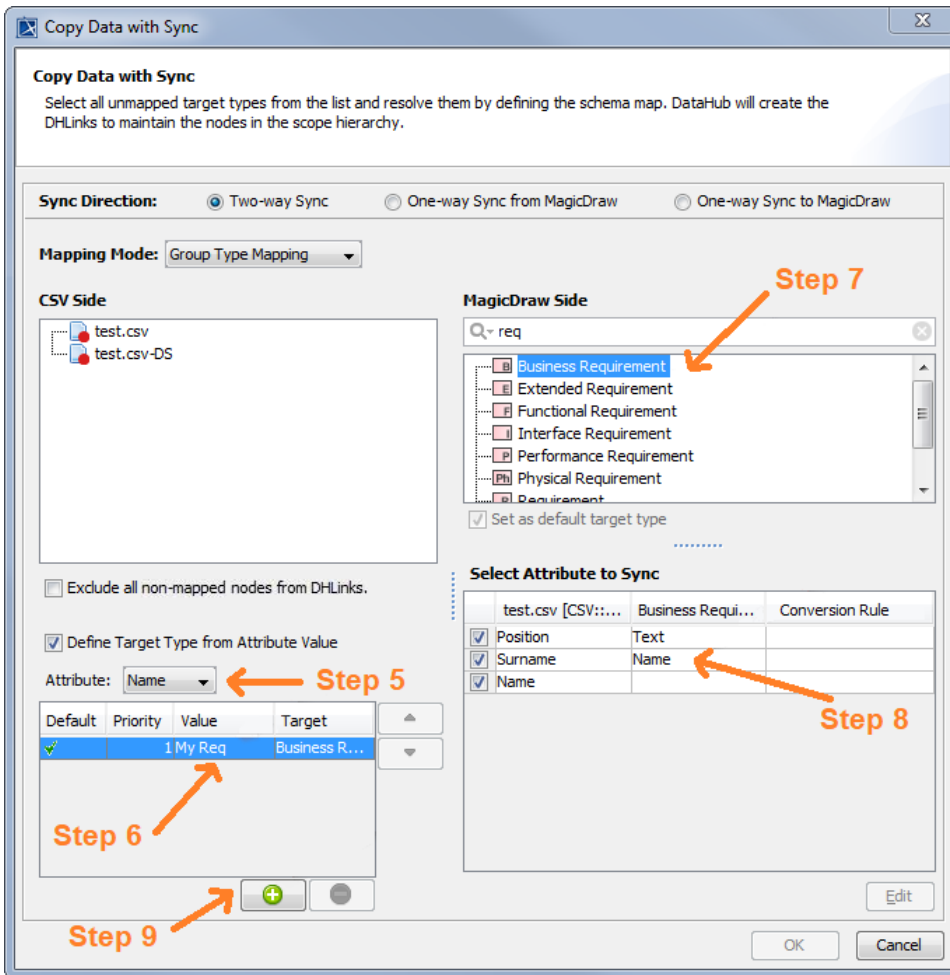
- From the table, select a target node type for that value.
- Continue mapping.
- If you have a simple data type, you can type any expected value in the **Value** box for mapping.

☒ Define Target Type from Attribute Value

Attribute: Name

Default	Priority	Value	Target
<input checked="" type="checkbox"/>	1	Low	
<input type="checkbox"/>		Medium	
<input type="checkbox"/>		High	

- If the attribute is a simple data type, you can type any expected value in the **Value** box.



- Repeat **Step 5** to **9** to map each attribute value.
- When you finish mapping each attribute value, click **OK** to start copying.



Note

- The functionality to map between **Attribute value** and **Target type** is available only in **Group Type Mapping**.

Related page

- At least 2 values must be identified for mapping.
- You can edit or deactivate the mapping in the [Schema Map Manager](#) dialog.
- [Mapping with Schema Map Manager](#)