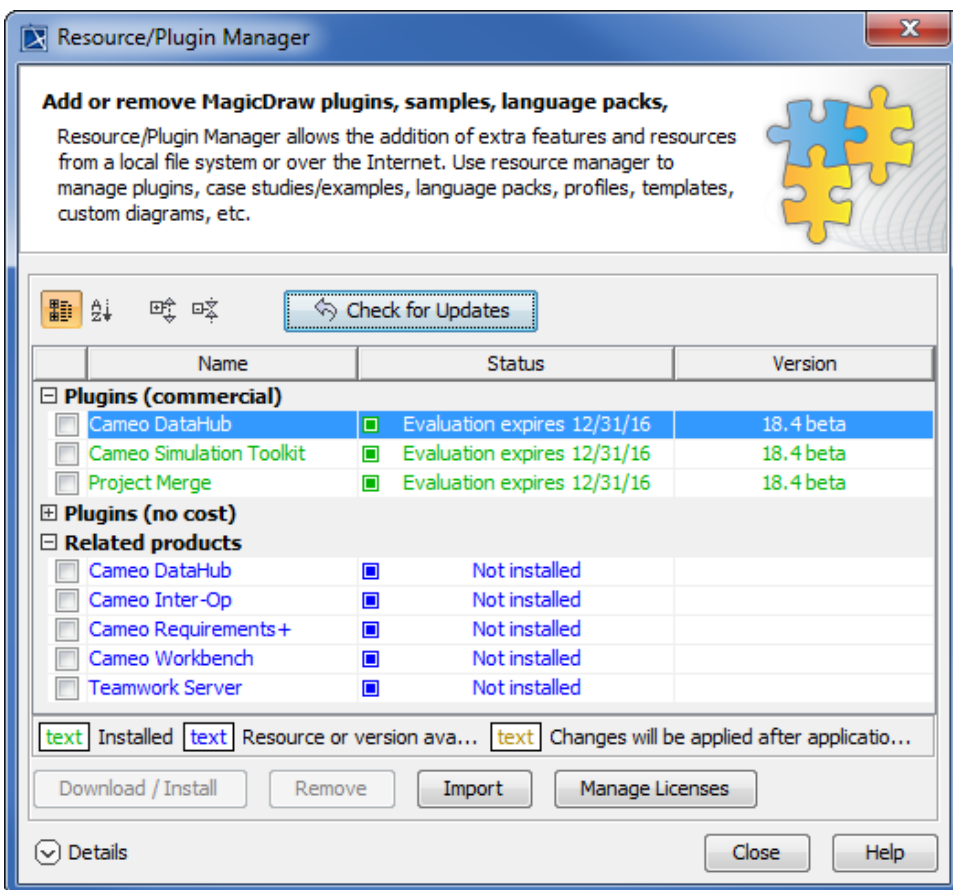


# Installing Cameo DataHub using Resource/Plugin Manager

To install the Cameo DataHub plugin using Resource/Plugin Manager

1. From the MagicDraw® main menu, click **Help > Resource/Plugin Manager**. The **Resource/Plugin Manager** dialog opens.



2. Select the **Cameo DataHub** check box under the **Plugins (commercial)** option.

**Download / Install**

3. Click **Download / Install**.
4. Restart MagicDraw® once the downloading and the installation process are completed.