

Exporting schema maps as new templates

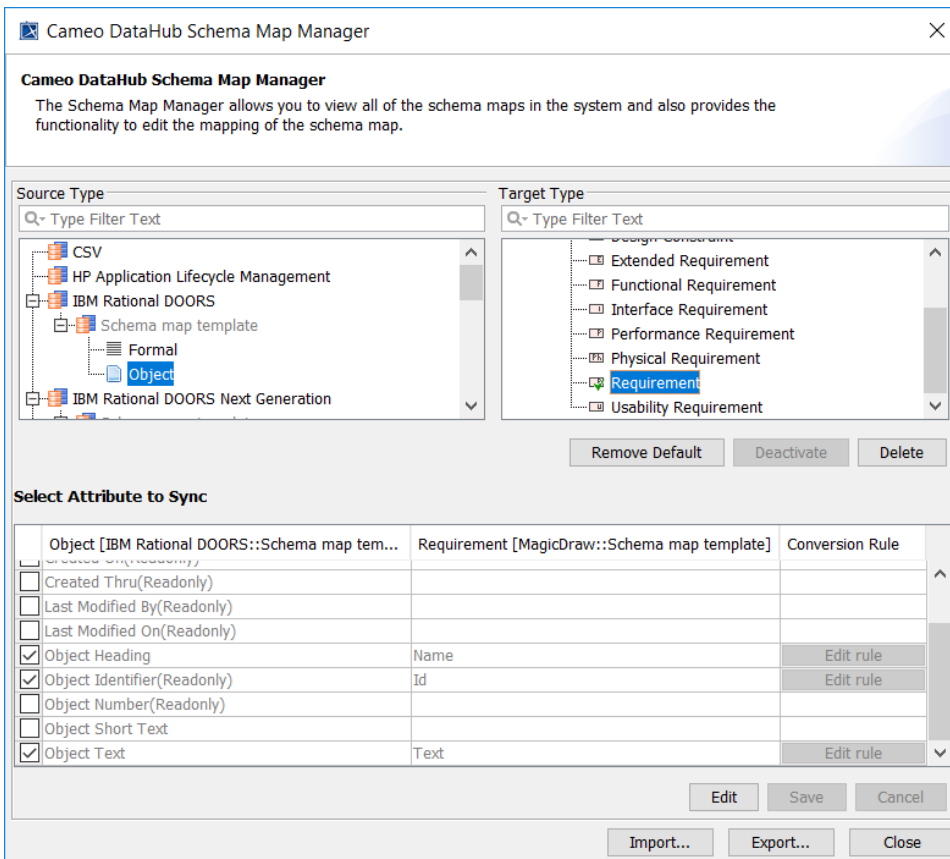
AVAILABLE FROM 19.0 SP1

You can now export the previously defined mappings of particular modules as new templates for Rational DOORS Data Sources to be effective when importing new modules.

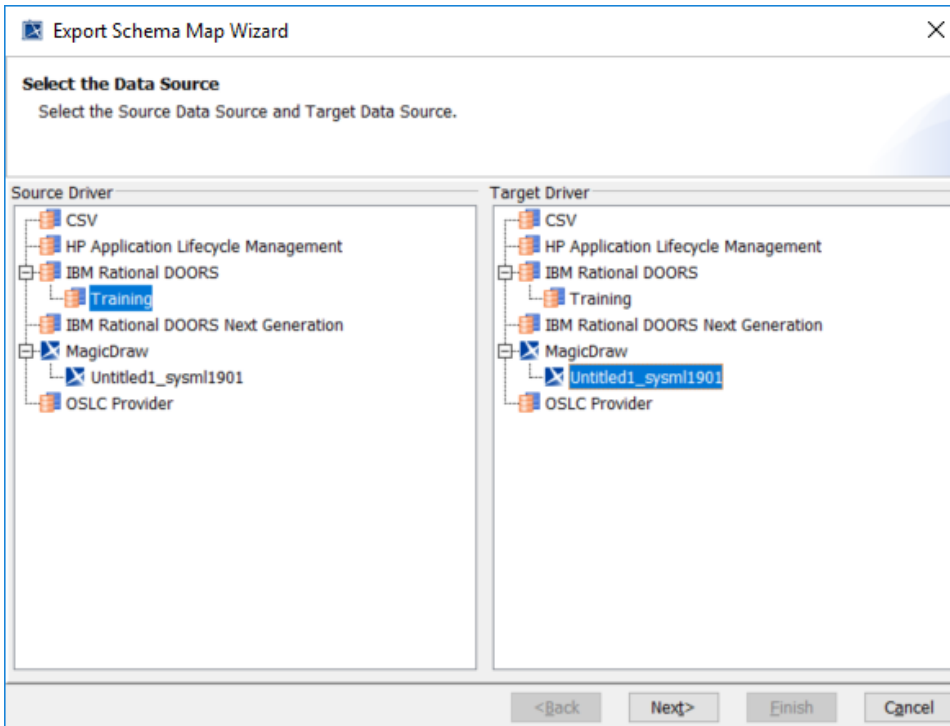
DataHub usually provides mapping template, e.g., the pre-mappings between DOORS objects and SysML Requirements with some properties mapped. However, you can now export the mappings done with a particular module to be a template. Therefore, when you import a new module, the new template is used.

To export a schema map as a new template

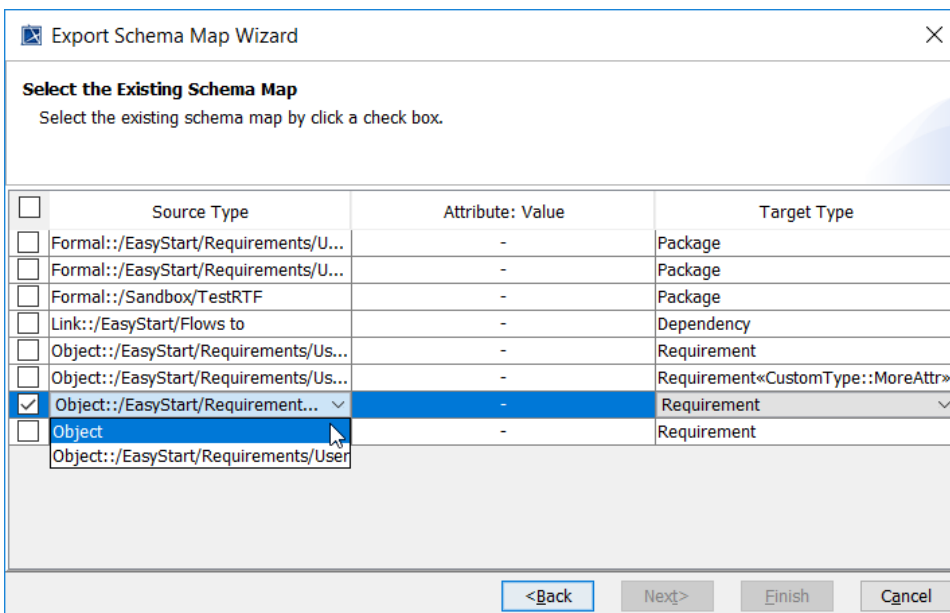
1. On the main menu, click **Tools > DataHub > Schema Map Manager**. The **Schema Map Manager** dialog opens. There are some properties with pre-mappings.



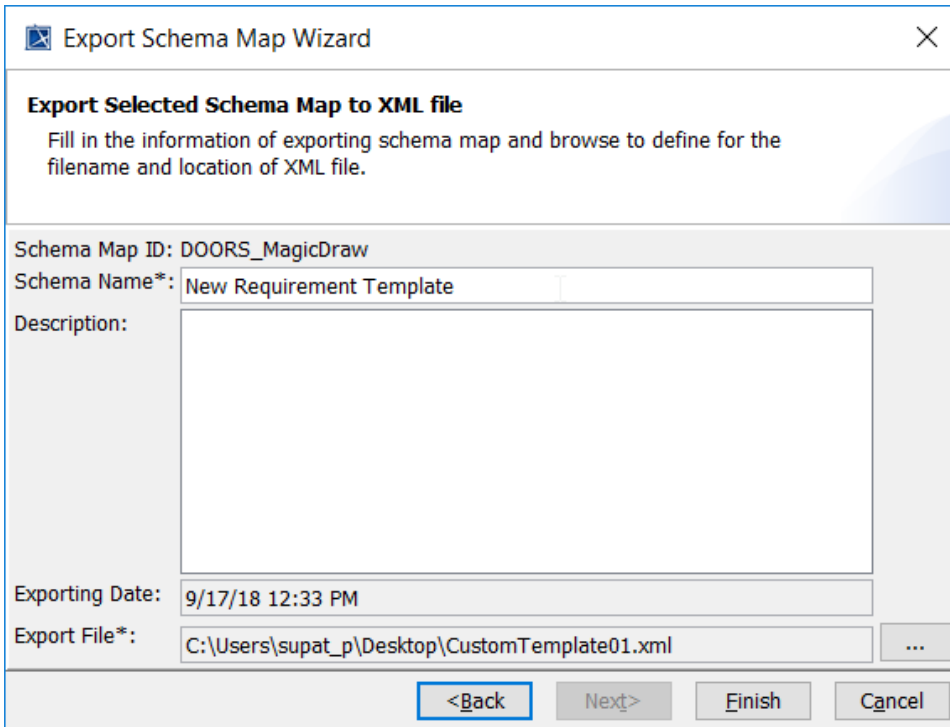
2. Click **Export**. The **Export Schema Map Wizard** appears.



3. Select the source and target driver of the map and click **Next**.
4. Select the box(es) in front of the maps and click the selected map to choose the DOORS type object to change it to generic type. Click **Next**.



5. Name the schema and the exported file. Click **Finish**.



Export Schema Map Wizard

Export Selected Schema Map to XML file

Fill in the information of exporting schema map and browse to define for the filename and location of XML file.

Schema Map ID: DOORS_MagicDraw

Schema Name*: New Requirement Template

Description:

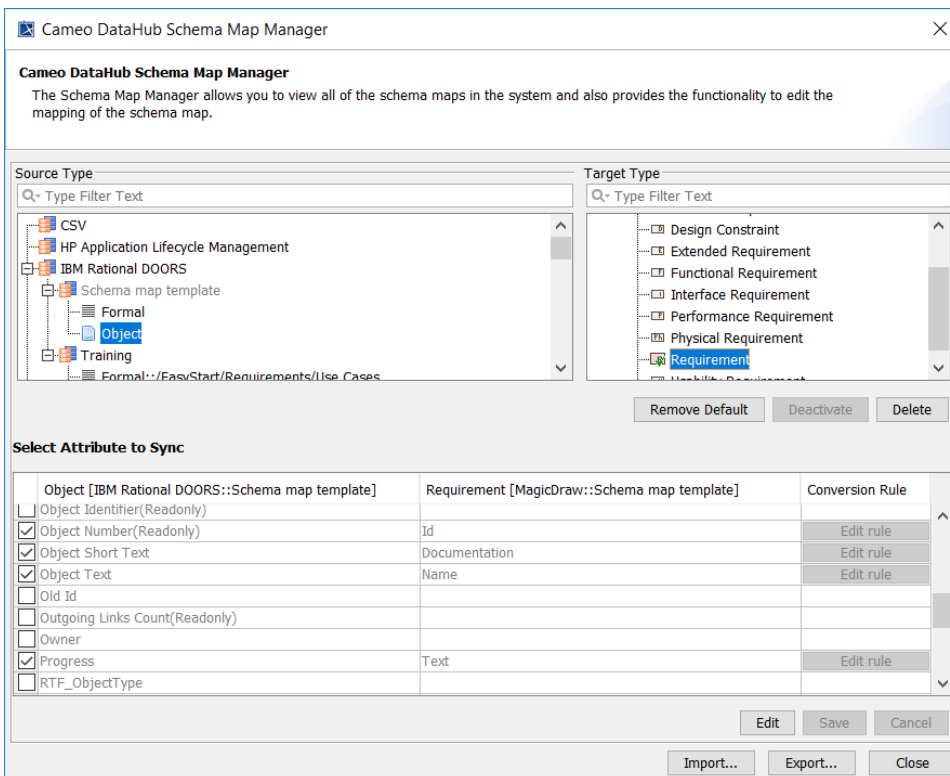
Exporting Date: 9/17/18 12:33 PM

Export File*: C:\Users\supat_p\Desktop\CustomTemplate01.xml

<Back Next> Finish Cancel

To import a schema map

1. On the main menu, click **Tools > DataHub > Schema Map Manager**. The **Schema Map Manager** dialog opens.
2. Click **Import** and choose the schema map file. The template will be updated with the new mapping.



Cameo DataHub Schema Map Manager

The Schema Map Manager allows you to view all of the schema maps in the system and also provides the functionality to edit the mapping of the schema map.

Source Type

Q- Type Filter Text

- CSV
- HP Application Lifecycle Management
- IBM Rational DOORS
 - Schema map template
 - Formal
 - Object
 - Training
 - Formal::/EasyStart/Requirements/Use Cases

Target Type

Q- Type Filter Text

- Design Constraint
- Extended Requirement
- Functional Requirement
- Interface Requirement
- Performance Requirement
- Physical Requirement
- Requirement
- Usability Requirement

Remove Default Deactivate Delete

Select Attribute to Sync

Object [IBM Rational DOORS::Schema map template]	Requirement [MagicDraw::Schema map template]	Conversion Rule
<input type="checkbox"/> Object Identifier(Readonly)		
<input checked="" type="checkbox"/> Object Number(Readonly)	Id	Edit rule
<input checked="" type="checkbox"/> Object Short Text	Documentation	Edit rule
<input checked="" type="checkbox"/> Object Text	Name	Edit rule
<input type="checkbox"/> Old Id		
<input type="checkbox"/> Outgoing Links Count(Readonly)		
<input type="checkbox"/> Owner		
<input checked="" type="checkbox"/> Progress	Text	Edit rule
<input type="checkbox"/> RTF_ObjectType		

Edit Save Cancel

Import... Export... Close