

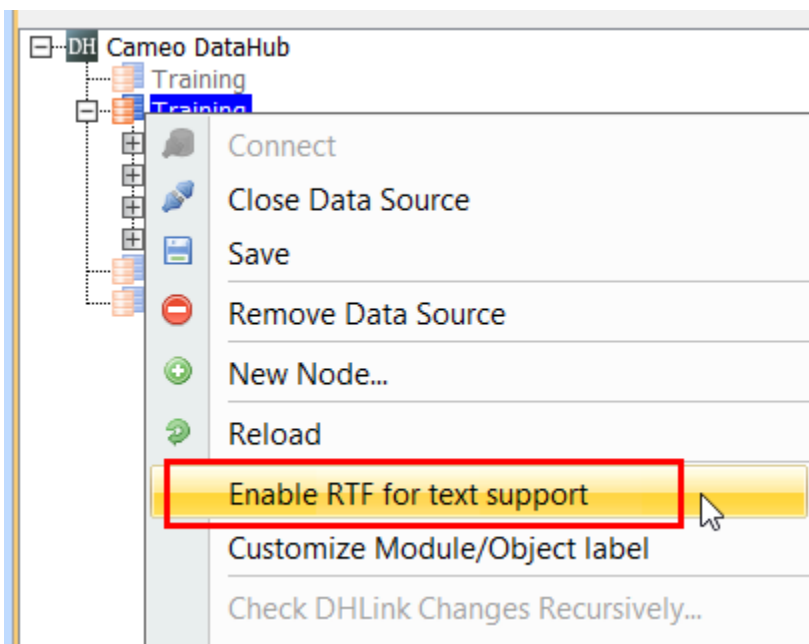
Working with RTF and OLE

AVAILABLE FROM 19.0 SP1

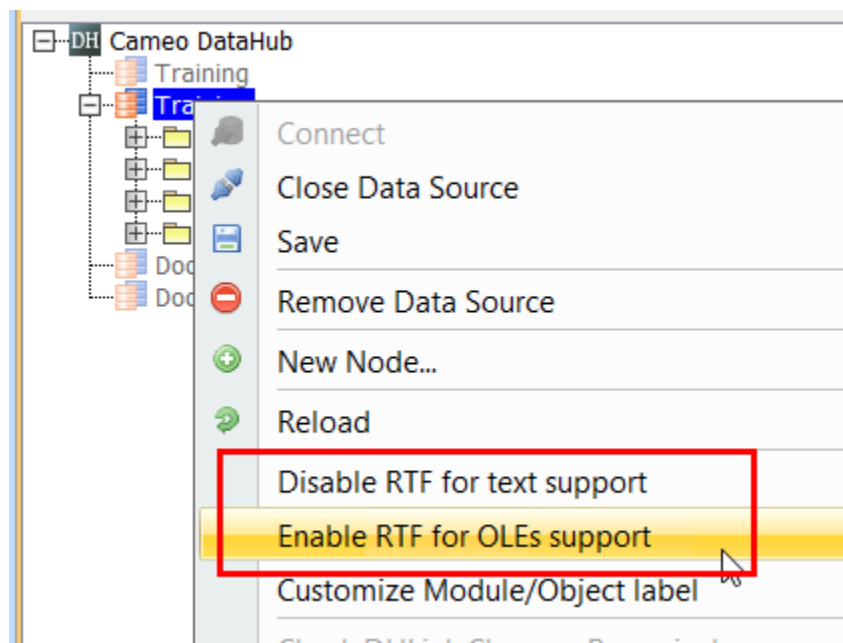
Cameo DataHub additionally supports text style in rich-text files (RTF) and image and other objects, e.g., Embedded Excel spreadsheet and Words files, in object linking and embedding (OLE).

To enable the RTF and OLE support


- Right-click the DOORS Data Source and select **Enable RTF for text support**.



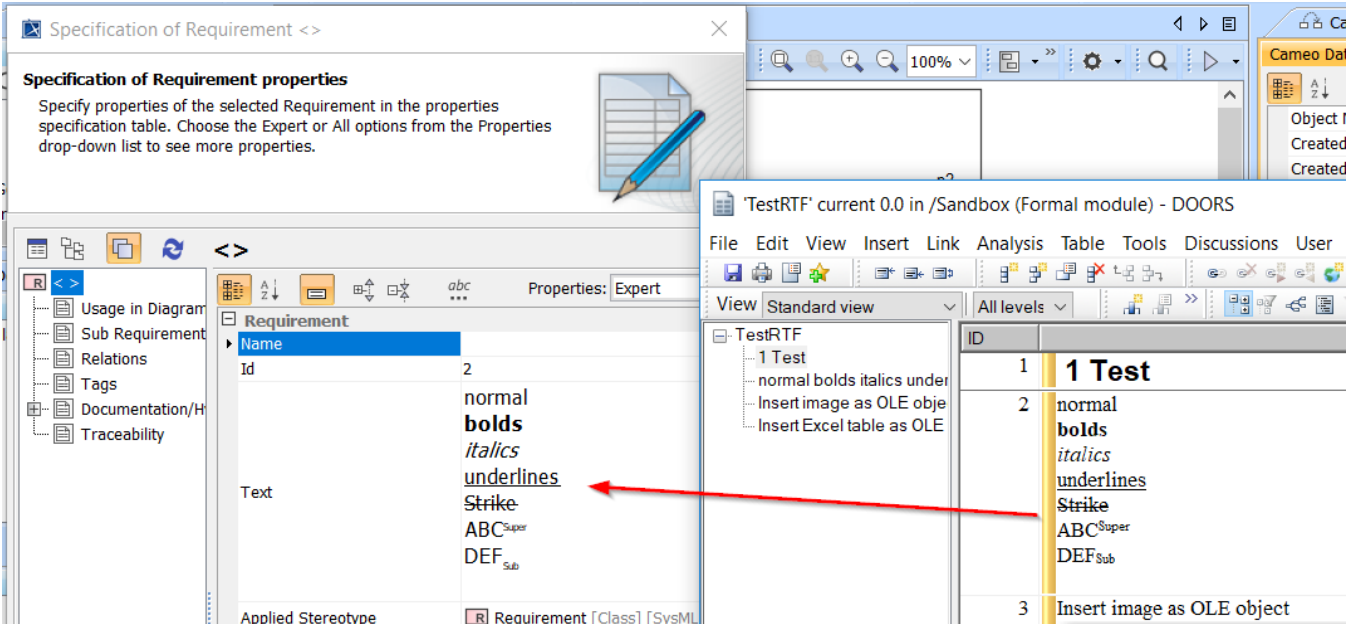
When you right-click the DOORS Data Source next time after you have enabled RTF for text support, there will be two more commands available to **disable RTF for text support** or **enable RTF for OLEs support**.



The Disable RTF for text support and Enable RTF for OLEs support commands are available after enabling RTF for text support.

RTF and OLE command	Function
Enable RTF for text support	Allows the support of text styles in RTF when copying data from DOORS to MagicDraw.
Disable RTF for text support (available after selecting Enable RTF for text support)	Suspends the RTF and OLE support.
Enable RTF for OLEs support (available after selecting Enable RTF for text support)	Copies text styles and image as an OLE object from DOORS to MagicDraw. <div> <div></div> <div> Note This function may take longer to complete the copying process, depending on the data amount. </div> </div>

If you have selected only **Enable RTF for text support** but does not select **Enable RTF for OLEs support** after right-clicking the DOORS Data Source for the second time, copying elements, e.g., Requirements from DOORS to MagicDraw will include only text styles, e.g., bold, italic, underline, strikethrough, superscript, and subscript. However, any image in the data will not be copied.



Text styles in RTF is copied from DOORS to MagicDraw when enabling RTF for text support.

the Expert or All options from the Properties drop-down list to see more properties.

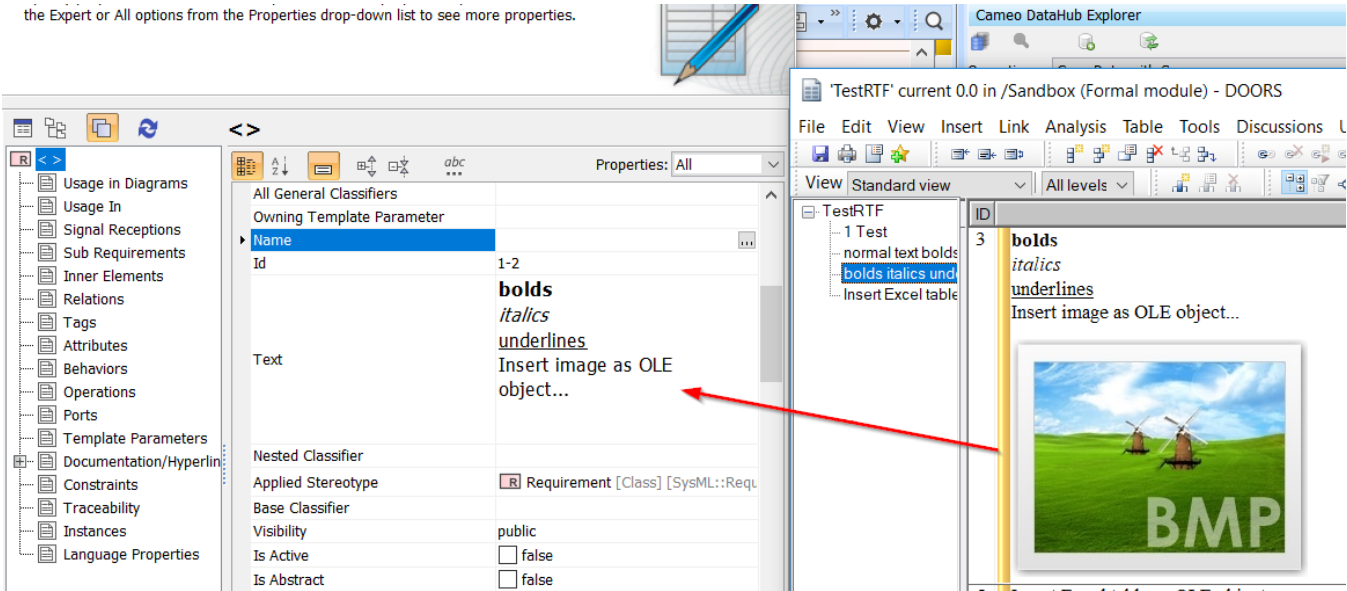
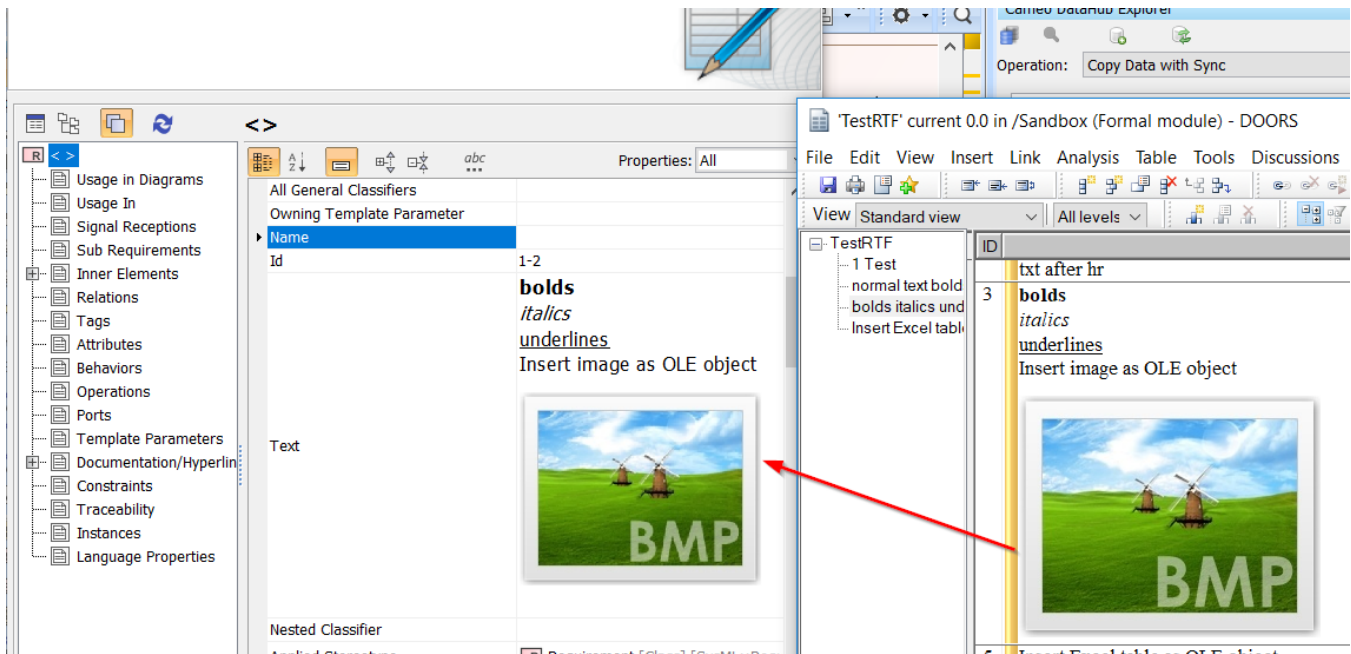


Image in RTF is not copied from DOORS to MagicDraw when selecting only the Enable RTF for text support command.

If you have selected **Enable RTF for text support** and select **Enable RTF for OLEs support** after right-clicking the DOORS Data Source for the second time, copying elements, e.g., Requirements from DOORS to MagicDraw will include both text styles and image as an OLE object.



RTF text styles and image as an OLE object are copied from DOORS to MagicDraw.

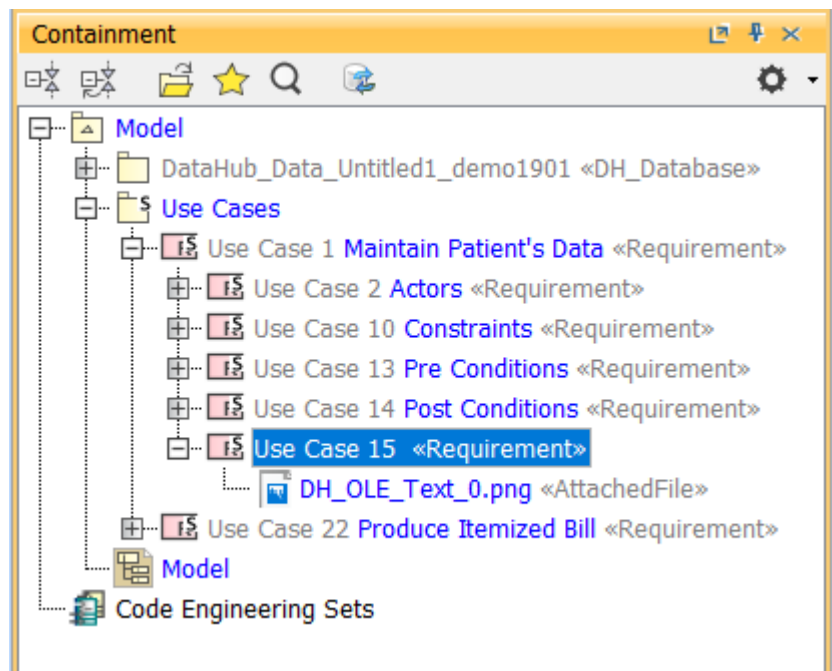


Image as OLE object is copied from DOORS to MagicDraw as an AttachedFile element under the copied element in the Containment tree.



Note

Due to the different compatibility of image types between MagicDraw and DOORS, image types are converted during synchronization between the tools.

- Synchronizing to MagicDraw: Image is converted to PNG.
- Synchronizing to DOORS: Image is converted to BMP.



Note

- Enabling the RTF and OLE support affects all child modules under the DOORS Data Source. If you want to disable the RTF and OLE support, right-click the DOORS Data Source and select **Disable RTF for text support**.
- DOORS object that contains WMF image is set as read-only to avoid the conversion to BMP, which will result in the loss of the functionality of vector image.
- DOORS object that contains any other OLE objects except image is set as read-only because DataHub does not support OLE objects.
- In most cases, the OLE content, e.g., embedded Excel table or Words is converted as image and synchronized to MagicDraw.