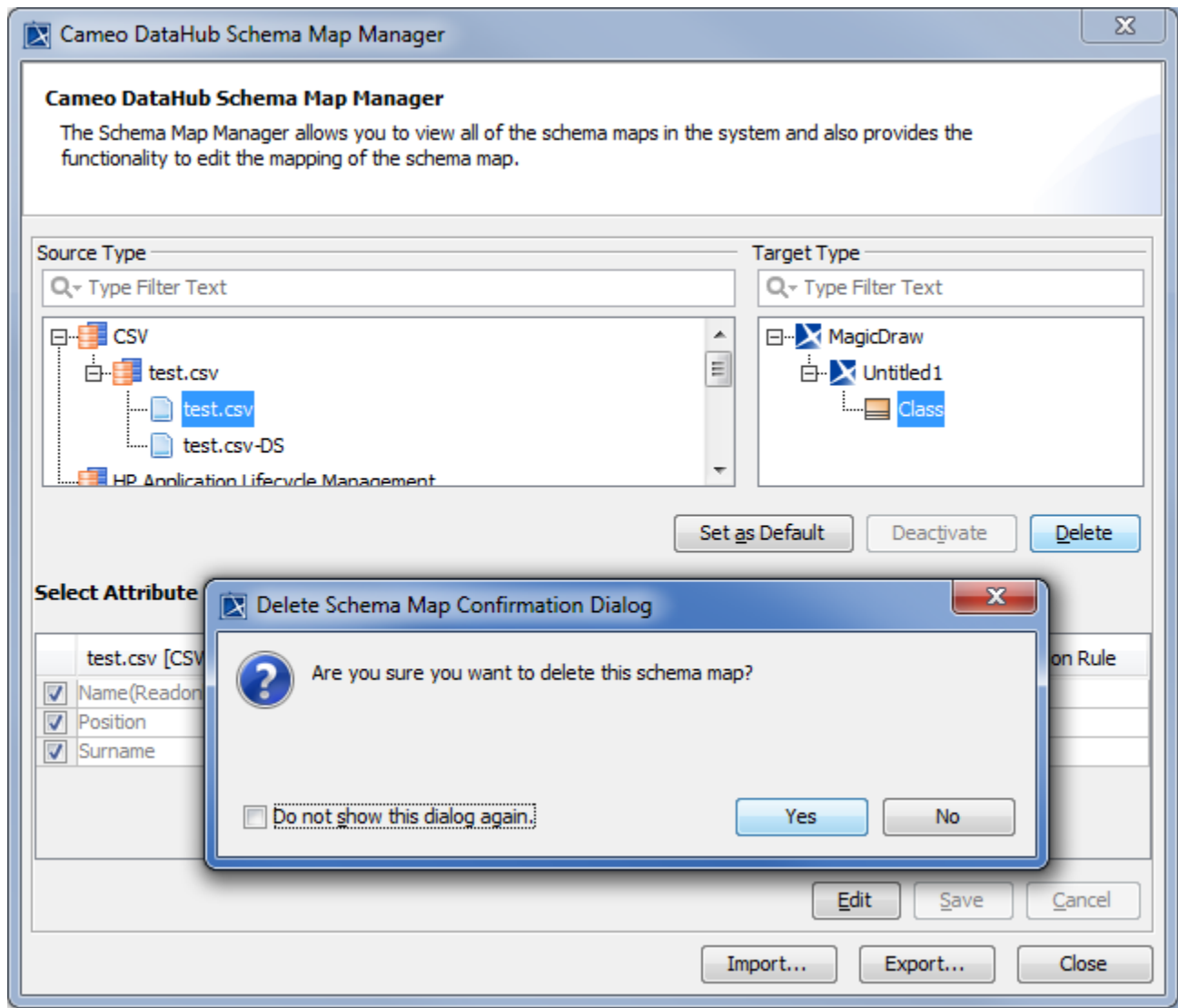


Deleting schema maps

If a schema map is referenced by a DHLink, it cannot be deleted. You can delete only schema maps that are not referenced by any DHLINKs. Deleting a ☐ **Define Target Type from Attribute Value** mapped schema deletes all defined target types. If you want to delete only some values of the schema, you can delete them in the **Define Target Type from Attribute Value** dialog.

To delete an existing schema map

1. Open the **Cameo DataHub Schema Map Manager** dialog. The **Cameo DataHub Schema Map Manager** dialog opens.
2. Select a source type that you want to edit its mapping. The default target type appears in the **Target Type** section.
3. Click **Delete**. A confirmation dialog box to confirm the deletion opens. Click **Yes**.



Note

If you delete a schema map that is currently in use, an error message opens, showing that one or more relations are using the deleted schema map. Therefore, you must delete the relations first, and then delete the schema map.