

# Conflict Dashboard

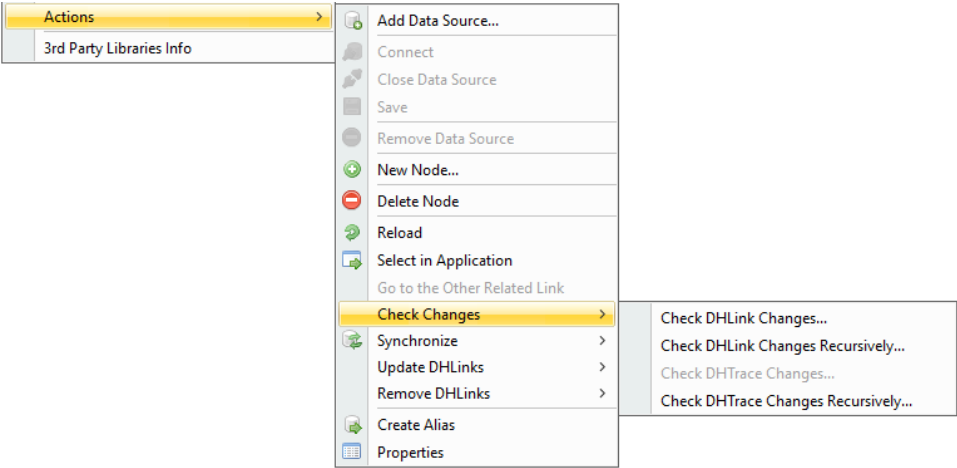
The **Conflict Dashboard** lists all the nodes that have been changed, moved, deleted, or excluded. A simple color scheme enables you to differentiate their modified conditions.

Information

The **Check DHLink Changes Recursively** command checks for changes in both the selected node and its child nodes.

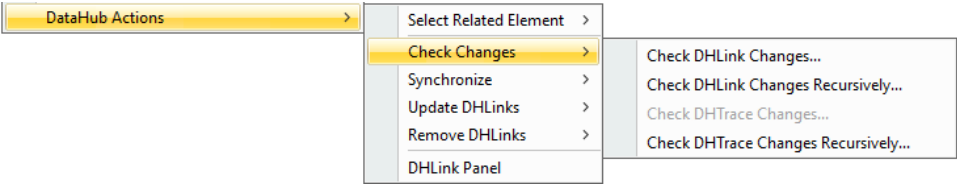
To access the **Conflict Dashboard** from the main menu

- Right-click a node and choose **Tools > DataHub > Actions > Check Changes > Check DHLink Changes** or **Check DHLink Changes Recursively**.



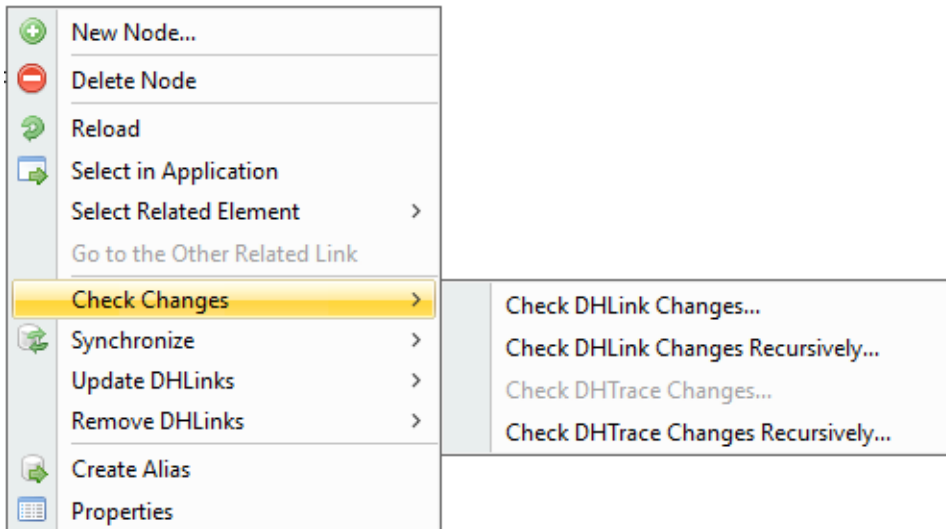
To access the **Conflict Dashboard** from a node in the MagicDraw Containment tree

- In the MagicDraw Containment tree, right-click a node and choose **DataHub Actions > Check Changes > Check DHLink Changes** or **Check DHLink Changes Recursively**.

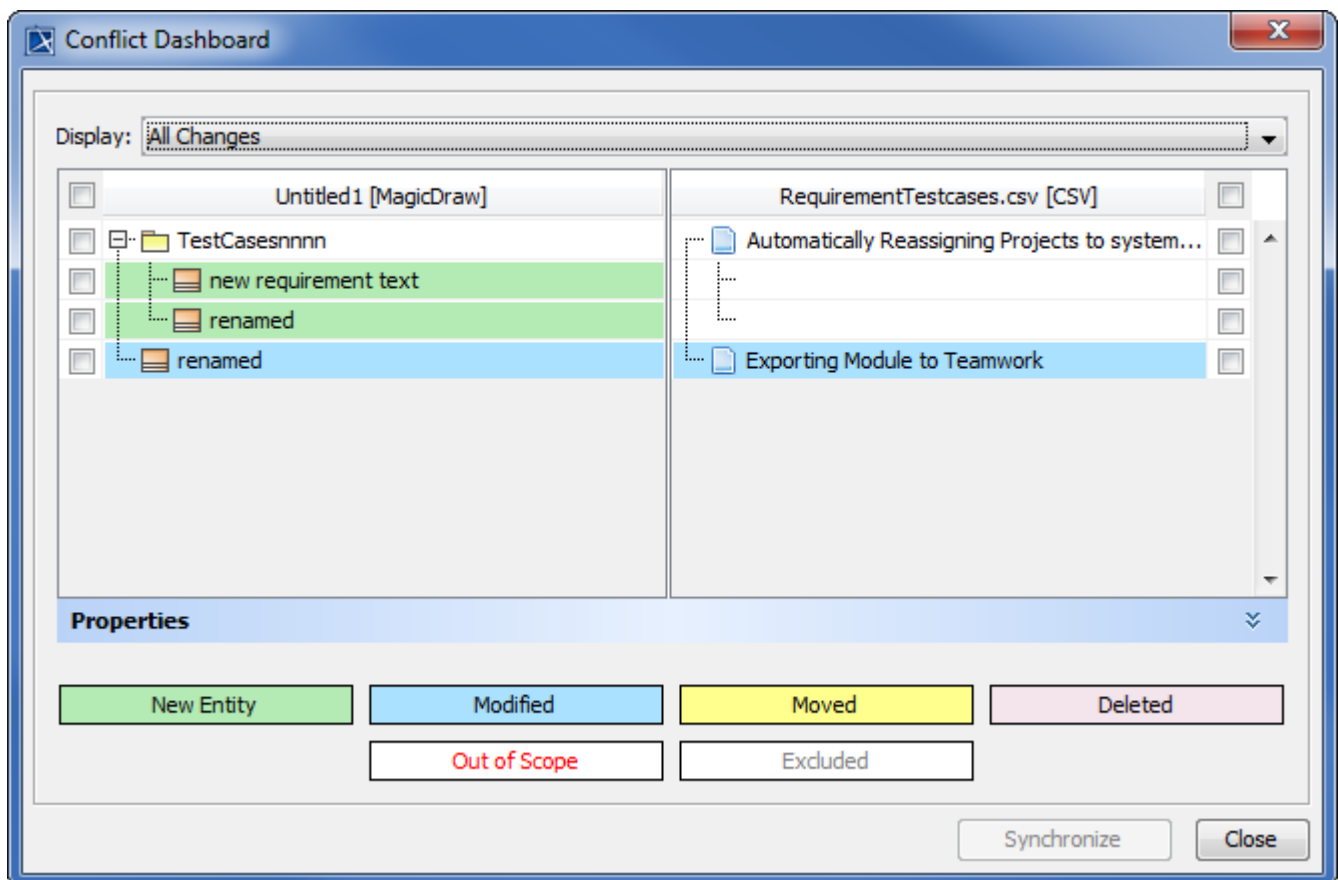


To access the **Conflict Dashboard** from a node in DataHub Explorer

- In DataHub Explorer, right-click a node and choose **Check Changes** > **Check DHLink Changes** or **Check DHLink Changes Recursively**.



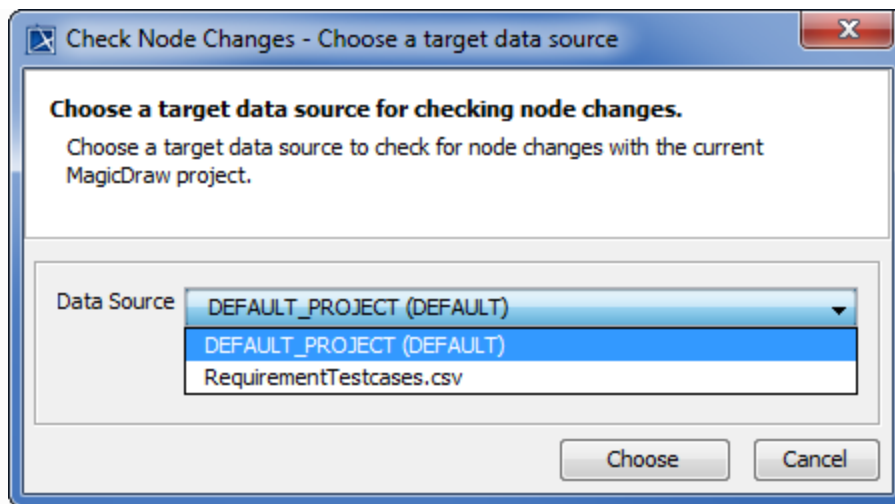
When you **Check DHLink Changes** or **Check DHLink Changes Recursively**, the **Conflict Dashboard** dialog appears if there are any changes. Otherwise, the dialog stating there are no changes in the selected elements opens instead.



The Conflict Dashboard dialog.

#### Information

If there is more than one Data Source connected, the dialog prompting you to choose a target Data Source to check for node changes appears.



The dialog prompting you to choose a target Data Source to check for node changes.