

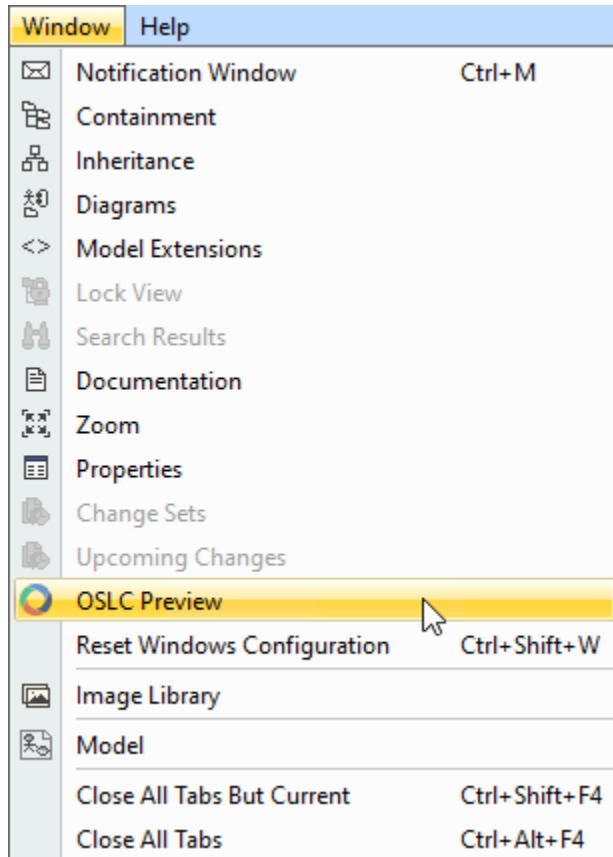
# OSLC Preview

Using **DataHub Explorer**, you can connect to the Data Sources, such as IBM® Rational® DOORS®, IBM® Rational® DOORS Next Generation, or other OSLC Providers. **DataHub Explorer** lists the content of the open Data Source.

The **OSLC Preview** tab in the [Quick properties panel](#) allows you to view the details of the OSLC resource. The OSLC resource can be selected from **Data Hub Explorer**, in the MagicDraw Containment tree, and an OSLC link to the other node from the connected OSLC Data Source that links to an element selected in the Model Browser.

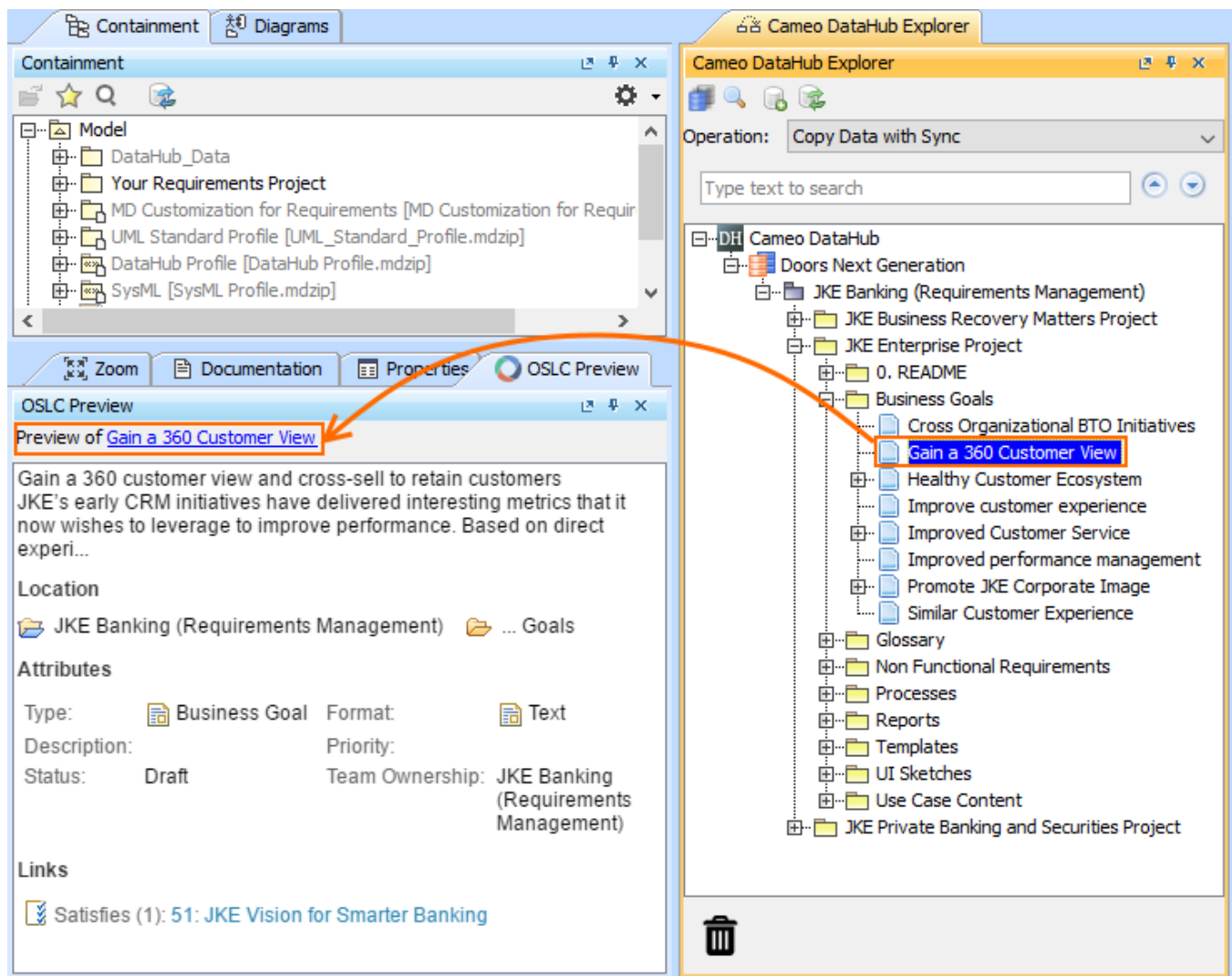
To open the **OSLC Preview** tab

- From the main menu, select **Window > OSLC Preview**.



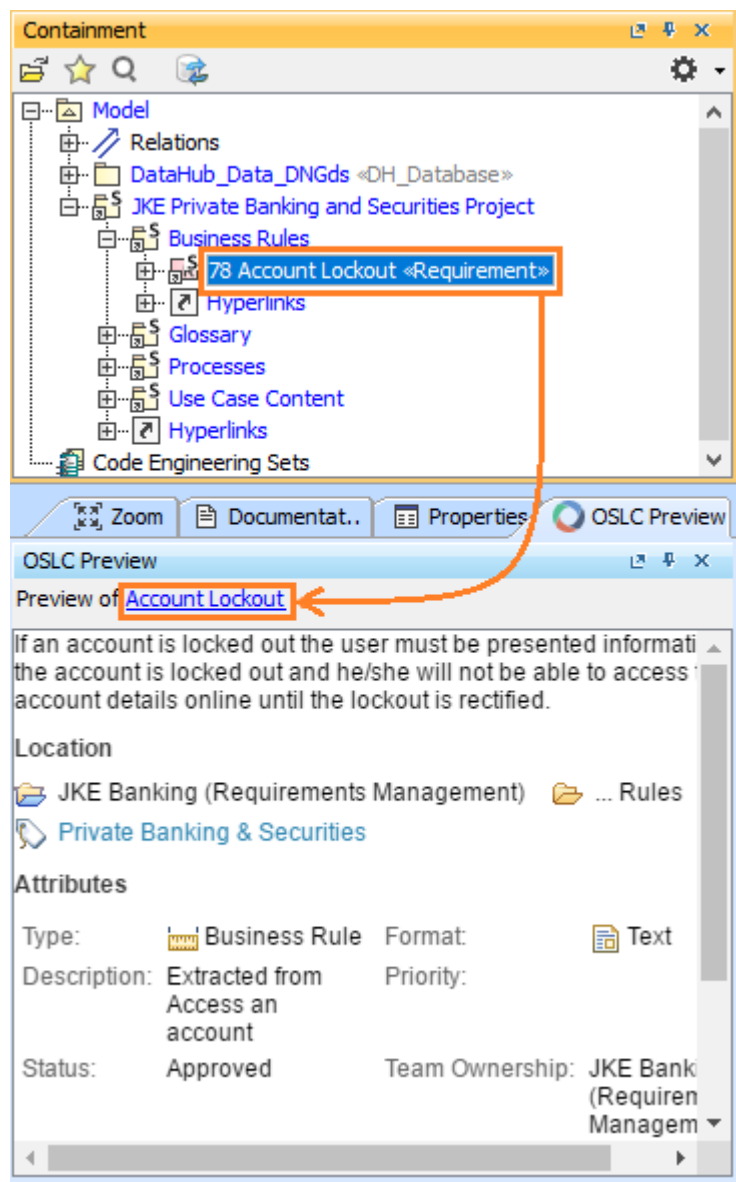
You can use OSLC preview to display the information of the selected node or the linked node in the following ways:

- When you add an OSLC Data Source into **DataHub Explorer**, e.g., DOORS Next Generation, the **OSLC Preview** tab can display the information of the selected node.



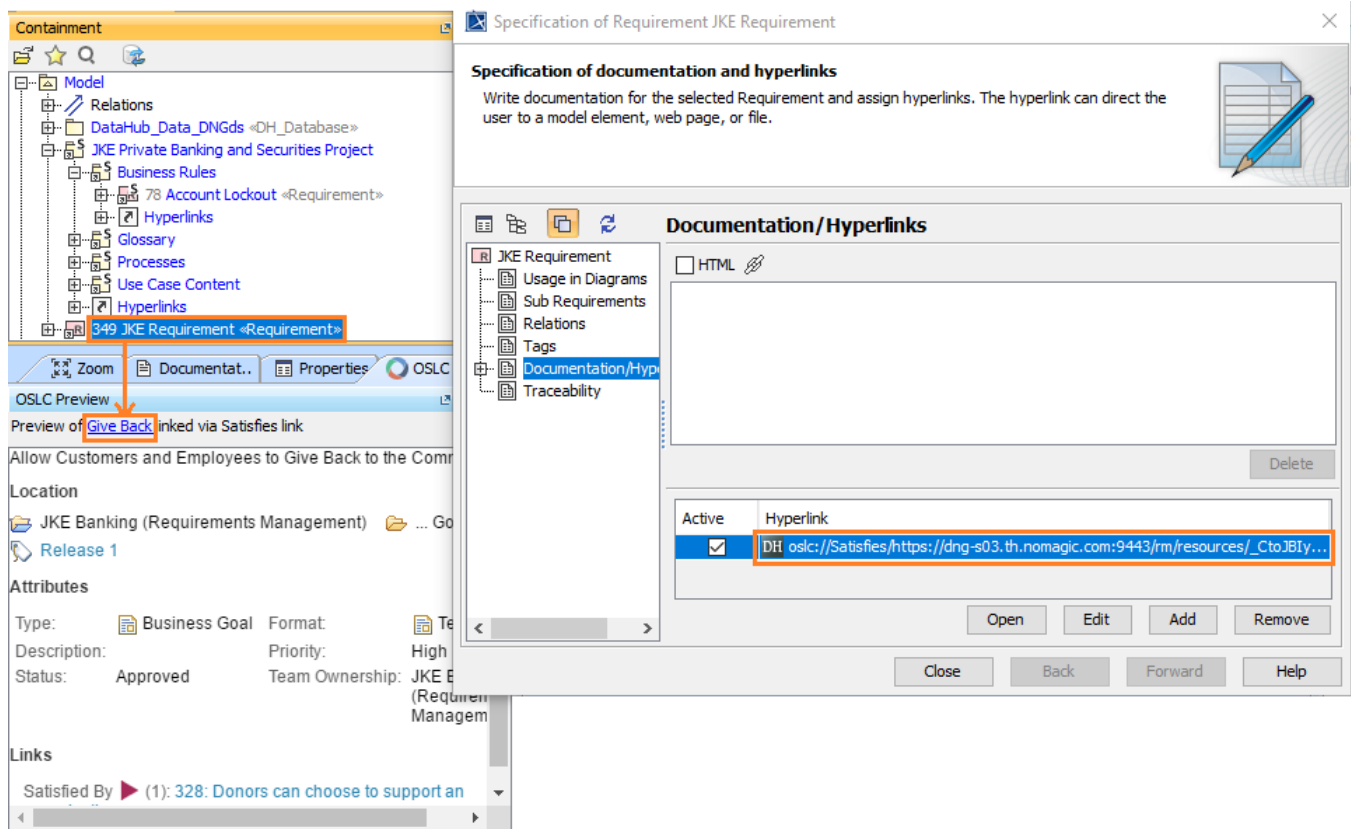
The details of the selected OSLC resource in Cameo DataHub Explorer are displayed in the OSLC Preview tab.

- When you import data from an OSLC Data Source into the MagicDraw Containment tree, the **OSLC Preview** tab can display the information of the related/linked node.



The details of the selected OSLC resource in the MagicDraw Containment tree are displayed in the OSLC Preview tab.

- With an existing element in the model, you can also manually create an OSLC link to the other node from the connected OSLC Data Source so that the **OSLC Preview** tab can display the information of the linked node.

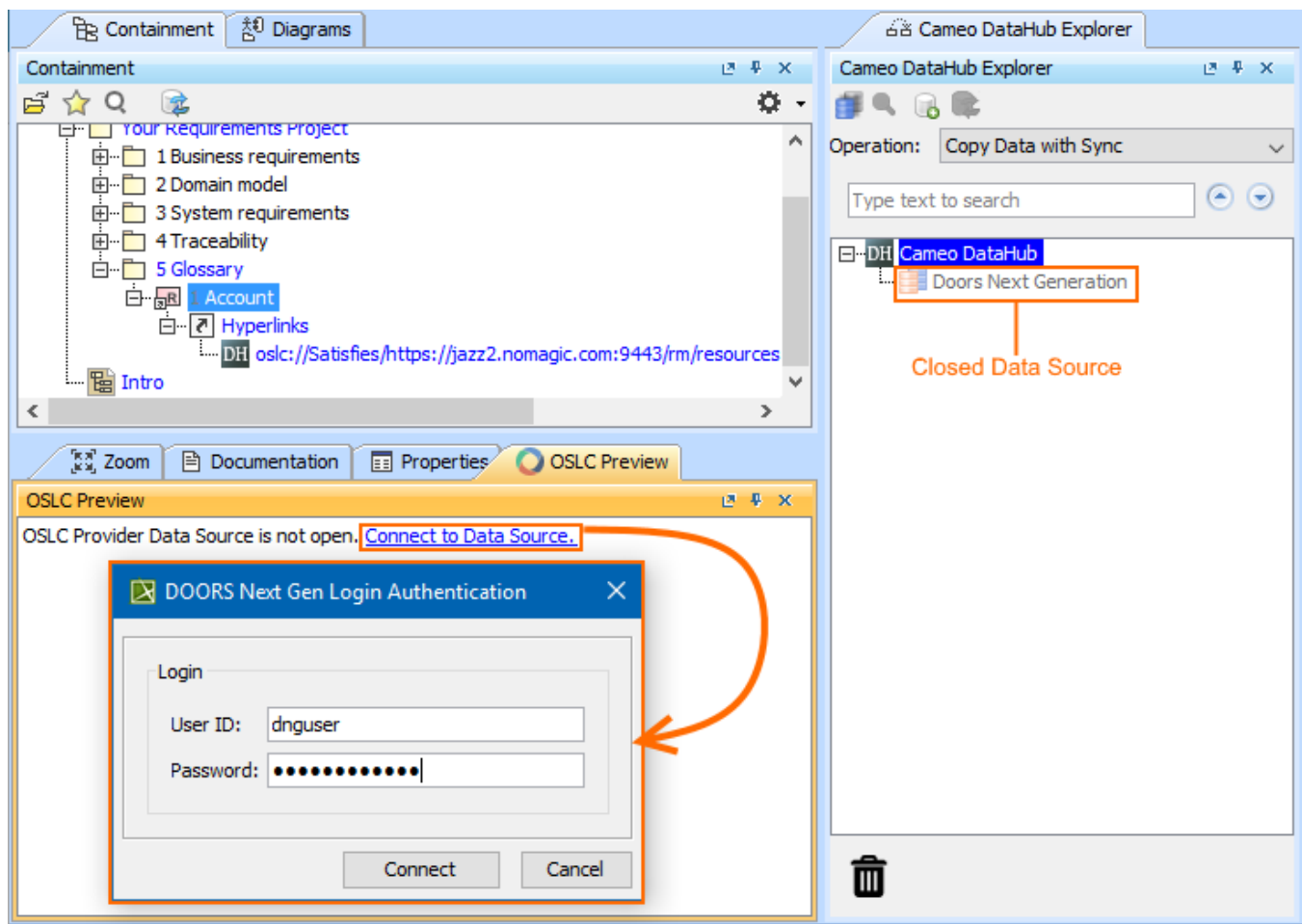


The detail of the resources that the OSLC link to are displayed in the OSLC Preview tab.

When the Data Source in **DataHub Explorer** is closed, the preview of the selected element details is not available. The **OSLC Preview** tab offers you a link to reconnect to the Data Source.

To reconnect to a Data Source

1. In the **OSLC Preview** tab, click the **Connect to Data Source** link.
2. In the login dialog, enter **User ID** and **Password**.
3. Click **Connect**.



An example of the closed Data Source.