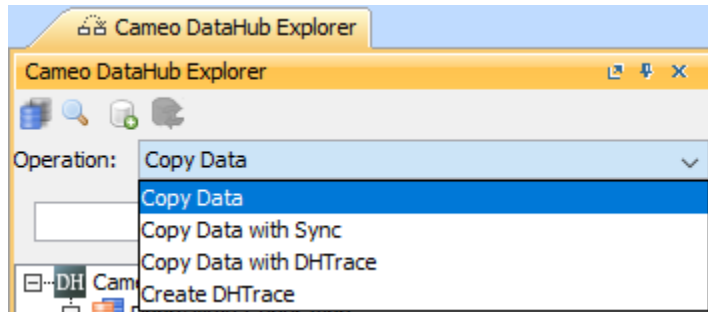


# Copy Data operations

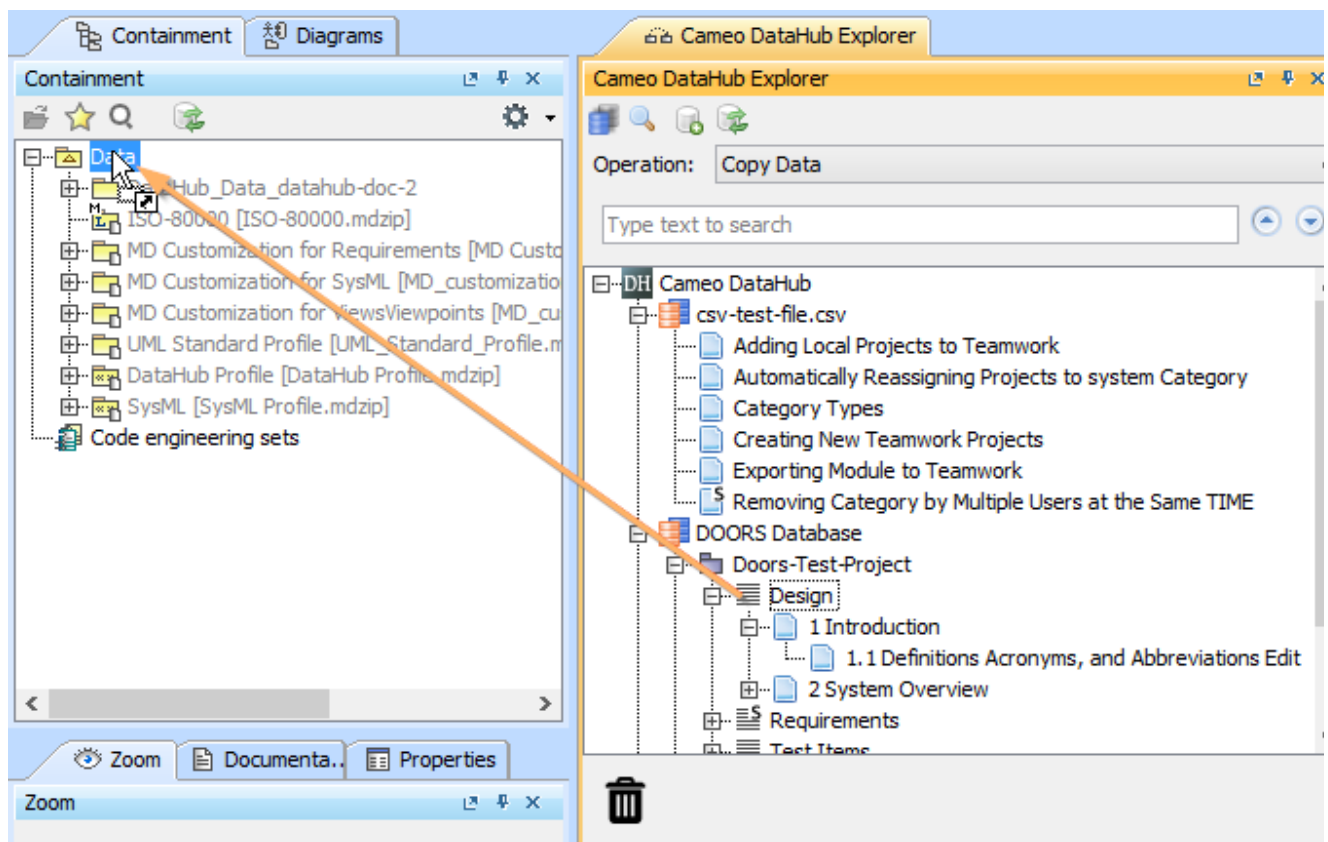
The DataHub **Copy Data** dialog allows you to copy data without synchronization. Copying data works like the copy and paste operation. If the node you want to copy does not have any default Schema Map, you must resolve any unmapped nodes through the **Copy Data** dialog.

To copy data from a source node to a target node

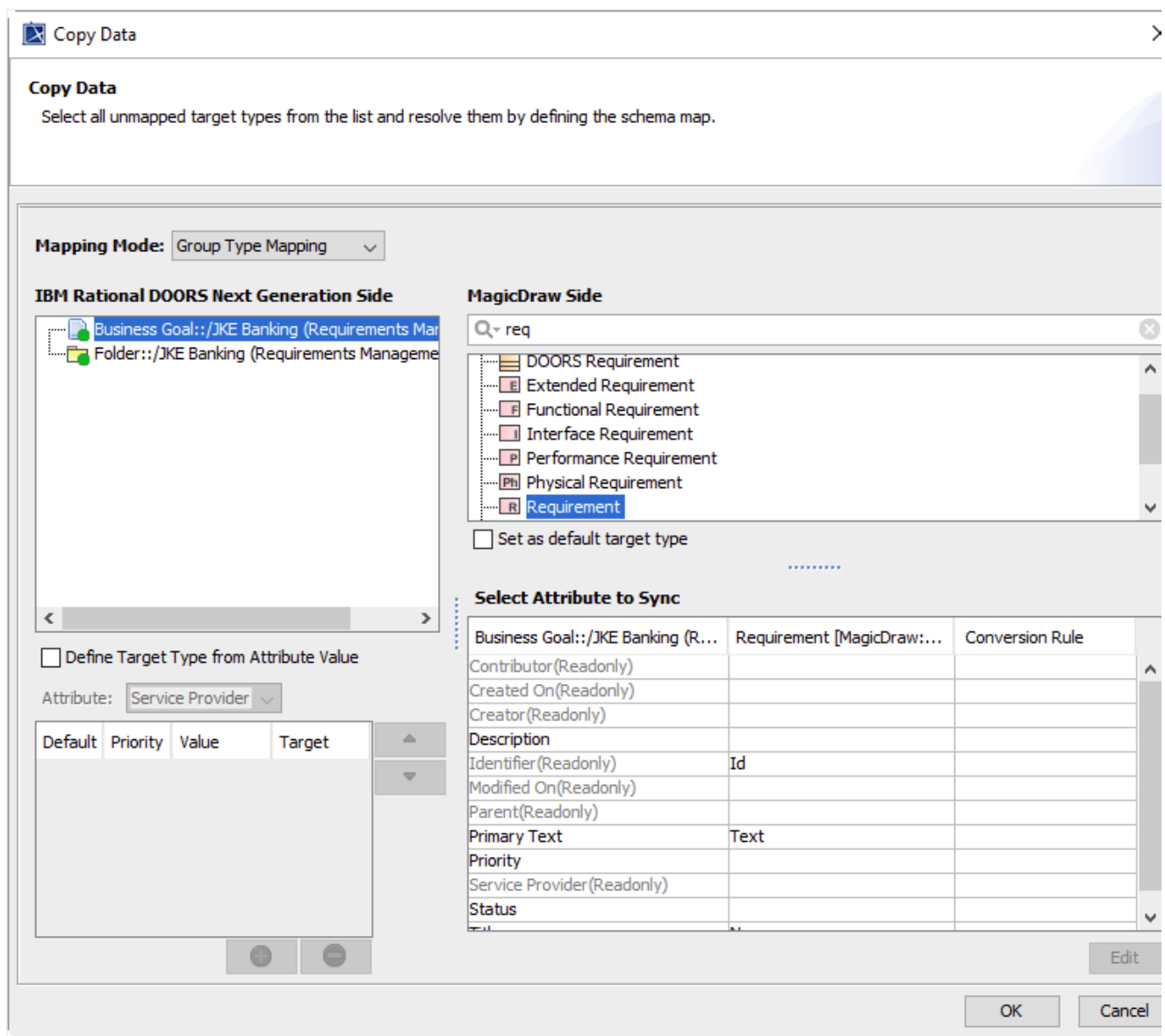
1. From the **Operation** drop-down list in **Cameo DataHub Explorer**, select **Copy Data**.



2. Drag a source node from **Cameo DataHub Explorer** to a target node in the MagicDraw Containment tree.







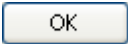
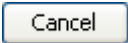
The **Copy Data** dialog opens.



3. Start mapping the source node attributes to target attribute types. You see the node color changing from a red circle to a green one, which means the node and its attributes have been mapped to a target type. The **OK** button becomes enabled at this point. Click **OK** to finish the copying process.

The functions in the **Copy Data** dialog are explained in the table below.

Component	Function
Mapping Mode	Switches between Individual Type Mapping and Group Type Mapping. The <b>Mapping Mode</b> drop-down list shows the default type that you selected through the <b>Options</b> dialog.
Source Tree	Specifies a data tree of the sources that are copied. You need to specify a target type for every source type.
	Identifies a node whose source type has already been resolved.
	Identifies a node whose source type needs to be resolved before copying.

	<p>Identifies the following items</p> <ul style="list-style-type: none"> <li>◦ a node that is not copied since the target type does not support any children.</li> <li>◦ a link that is not copied since the source and/or the target type does not support the link.</li> </ul>
<p>The following three rows are for the <input type="checkbox"/> <b>Define Target Type from Attribute Value</b> mapping mode option.</p>	
Define Target Type from Attribute Value	<p>Maps by using the <input type="checkbox"/> <b>Define Target Type from Attribute Value</b> mode. If you select this mode, you need to define the values and specify the target types of each value in the provided table. This mode is enabled in <b>Group Type Mapping</b> only.</p>
Attribute	<p>Selects an attribute of a source node and define its values and a target type. The selected attribute is not available to be mapped for the Source Attribute in the Schema Map table.</p>
Define Value (below Attribute)	<p>Defines the values of a selected attribute and the target type of each value. The table consists of the following columns</p> <ul style="list-style-type: none"> <li>◦ <b>Default</b> Specifies a default target type. If an attribute value does not match any mapped values when copying data or creating a relation, DataHub uses the default target type.</li> <li>◦ <b>Priority</b> Specifies the priority of a target type. It is used when a defined attribute has multiple values. The first target type on the list has the highest priority and is always selected first in the mapping process.</li> <li>◦ <b>Value</b> Selects a value for a target type. If a selected attribute is an Enumeration, you can choose the values from the drop-down list.</li> <li>◦ <b>Target</b> Defines a target type for a selected value.</li> </ul>
Quick search	<p>Finds a particular type that contains the specific searched text.</p>
Target Type tree	<p>Shows all types that are allowed to be added according to the type you have selected in the Data Type tree.</p>
Set as default target type	<p>Sets a selected target type to be default when the same mapping source attribute is selected next time.</p>
Schema Map	<p>Maps source attributes with target attributes and use them in data synchronization.</p>
	<p>Edits a Schema Map by selecting the attributes in the provided Schema Map table.</p>
	<p>Starts copying the selected target type and Schema Map.</p>
	<p>Cancels the copying action.</p>