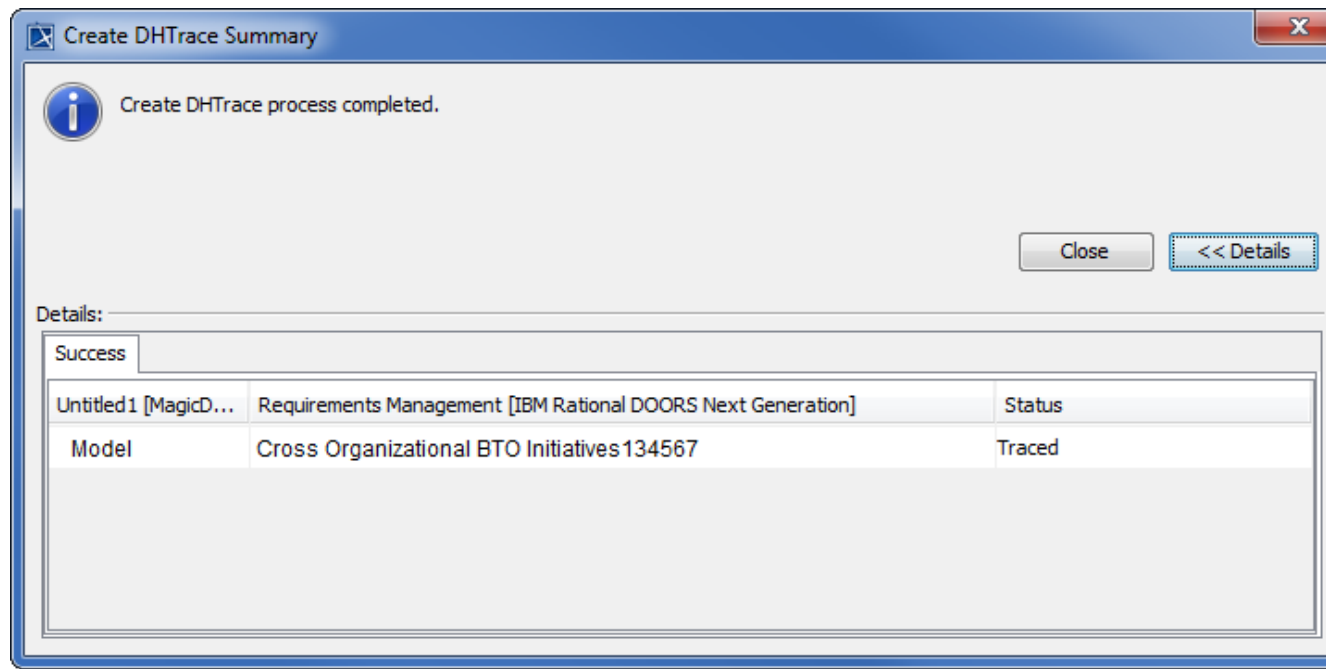


# Creating DHTrace links

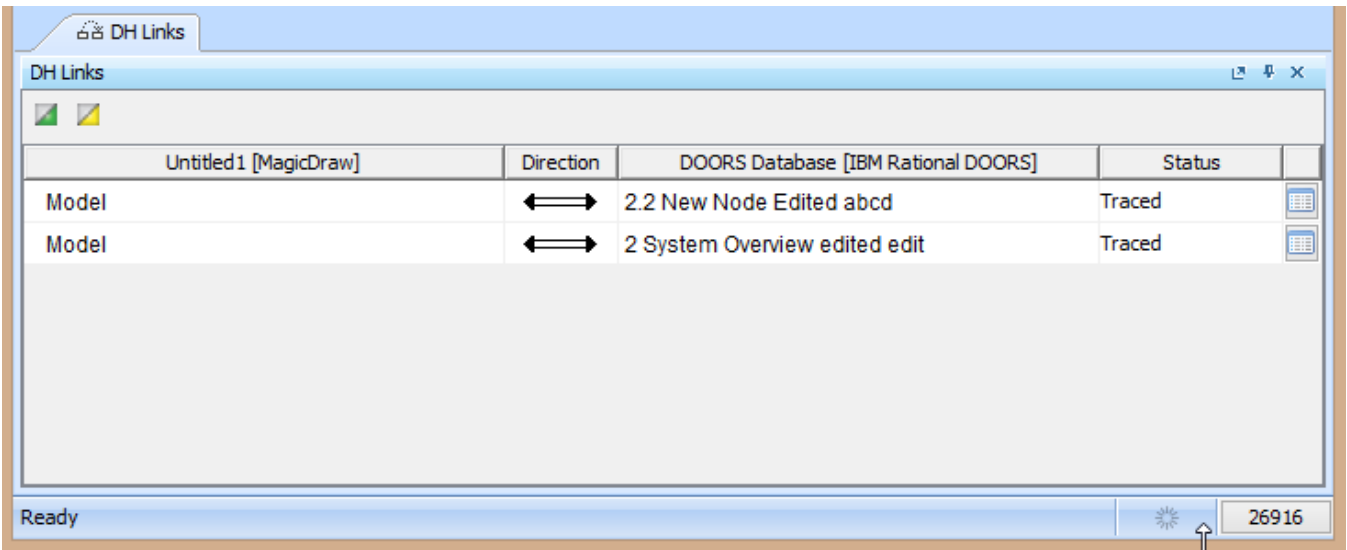
There are two types of links supported by DataHub: DHLinks and DHTrace links. You can choose to copy data with DHLinks, with DHTrace links, or without any links.

To create a DHTrace link

- 1. From the **Operations** drop-down list, select the **Create DHTrace** option.
- 2. Drag a node, e.g., a DOORS or CSV Data Source, to the MagicDraw Containment tree.
- 3. The **Create DHTrace Summary** dialog box opens to confirm the DHTrace link has been created.



The DHTrace links appear on the **DH Links** panel.



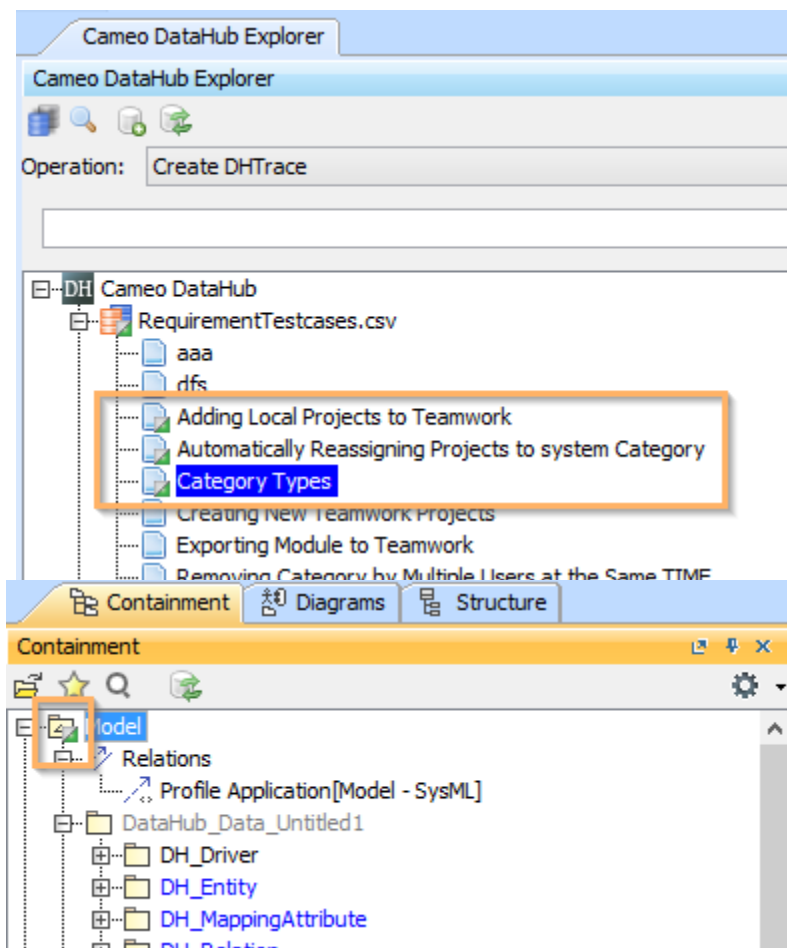
DHTrace links on the DH Links panel.

#### Note

Nodes that contain DHTrace links are indicated with small half-green squares. In the following figure, the DHTrace links are created between CSV Data Source nodes and MagicDraw elements. The links are indicated with small half-green squares in **Cameo DataHub Explorer** and the MagicDraw

**Containment** tree.

- [Copy Data with Sync](#)



CSV Data Source nodes with DHTrace links to MagicDraw elements are indicated with small half-green squares in Cameo DataHub Explorer and the MagicDraw Containment tree.