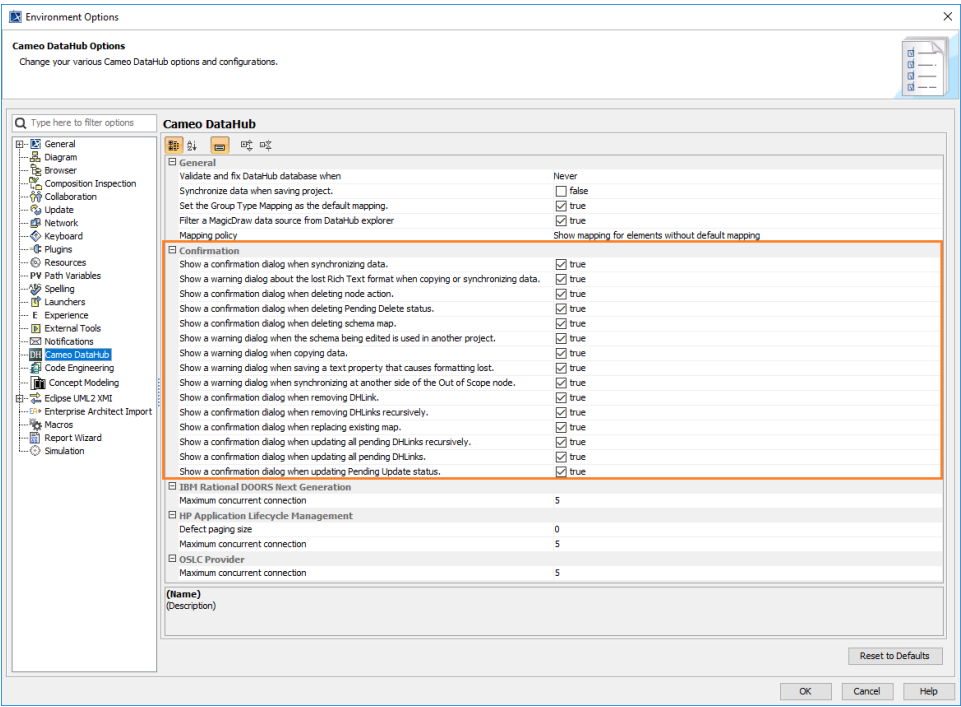


Confirmation

You can also adjust the Behavior of the **Confirmation** popup dialogs in DataHub through the **Confirmation** option group.

To enable or disable the Cameo DataHub **Confirmation** dialogs in MagicDraw®

1. Open the **Cameo DataHub Options** dialog.



2. Select or clear the popup dialogs that you want to enable or disable.
3. Click **OK**.

The following table explains the **Confirmation** option group in the **Cameo DataHub Options** dialog.

| Option | Function |
|---|---|
| Show a confirmation dialog when synchronizing data. | Opens a confirmation dialog before synchronizing data. |
| Show a warning dialog about the lost Rich Text format when copying or synchronizing data. | Opens a warning dialog that copying or synchronizing data erases the Rich Text format. |
| Show a confirmation dialog when deleting node action. | Opens a confirmation dialog before deleting a node. |
| Show a confirmation dialog when deleting Pending Delete status. | Opens a confirmation dialog before deleting a node whose status is PendingDelete . |
| Show a confirmation dialog when deleting schema map. | Opens a confirmation dialog before deleting a schema map. |
| Show a warning dialog when the schema being edited is used in another project. | Opens a warning dialog when editing a schema used in another project. |
| Show a warning dialog when copying data. | Opens a warning dialog before copying data when some nodes have not been completely mapped. |
| Show a warning dialog when saving a text property that causes formatting lost. | Opens a warning dialog about saving a property value erases the format. |
| Show a warning dialog when synchronizing at another side of the Out of Scope node. | Opens a warning dialog that synchronizing data relocates some out-of-scope nodes on the other side within the DHLINK. |

| | |
|---|---|
| Show a confirmation dialog when removing DHLink. | Opens a confirmation dialog before removing the DHLink of the selected node. |
| Show a confirmation dialog when removing DHLinks recursively. | Opens a confirmation dialog before removing DHLinks of the selected node and its hierarchy. |
| Show a confirmation dialog when replacing existing map. | Opens a confirmation dialog before overwriting a schema map. |
| Show a confirmation dialog when updating all pending DHLinks recursively. | Opens a confirmation dialog before updating all pending DHLinks of the selected node and its hierarchy. |
| Show a confirmation dialog when updating all pending DHLinks. | Opens a confirmation dialog before updating all pending DHLinks of the selected node. |
| Show a confirmation dialog when updating Pending Update status. | Opens a confirmation dialog before updating a node whose status is PendingUpdate . |



Note

- An out-of-scope node is a node that has been relocated outside the root node. Therefore, the node hierarchy is changed.
- Synchronizing on the side where some out-of-scope nodes exist does not change the node hierarchy of the related nodes on the other side. Therefore, a warning message does not open, but synchronizing from the other side moves the out-of-scope nodes to their original locations.