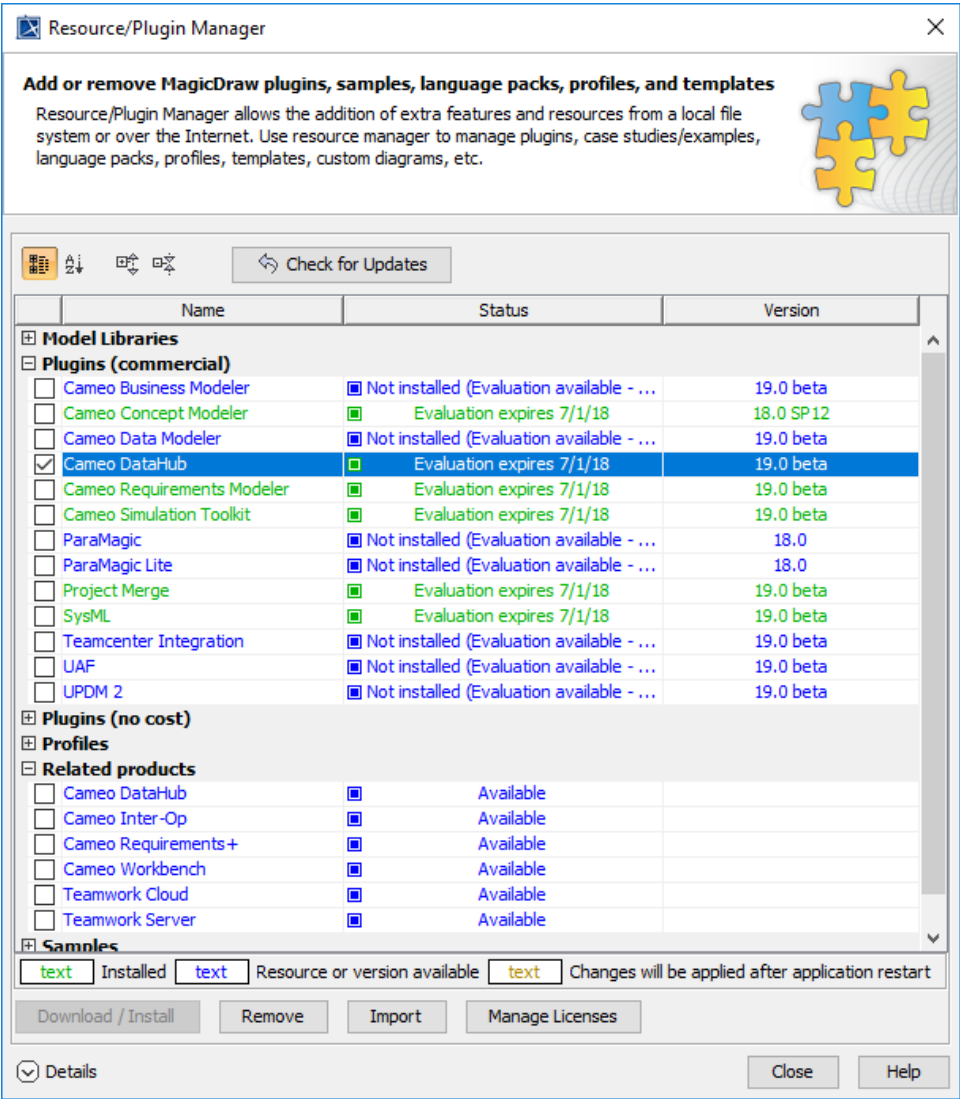


Upgrading from previous versions of DataHub

Upgrading the DataHub version involves removing the older version first. After the current DataHub version has been removed, you must [re-install DataHub](#)

To upgrade the DataHub version

1. From the MagicDraw main menu, click **Help > Resource/Plugin Manager**. The **Resource/Plugin Manager** dialog opens.
2. Under the **Plugins (commercial)** option, select the **Cameo DataHub** check box.



3. Click **Remove**.
4. After you have removed the **Cameo DataHub** plugin, [re-install DataHub](#).