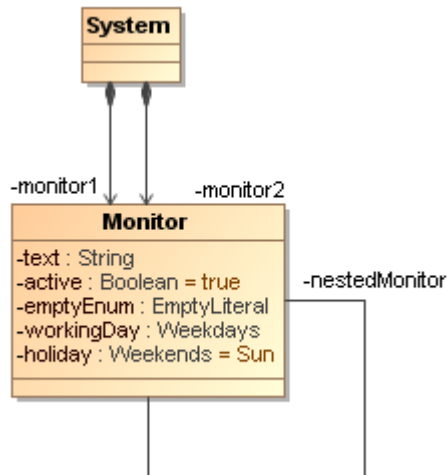


Representing parts of a simulation context

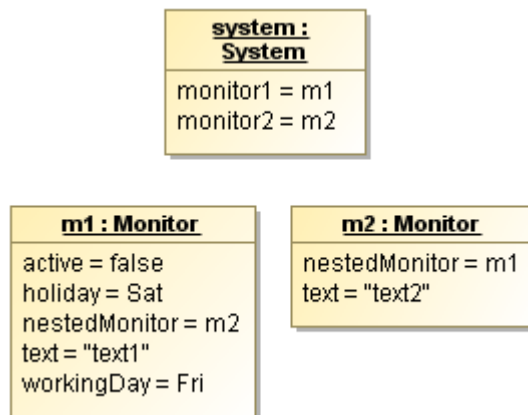
A UI Panel or UI Group Box to which a NestedUIConfig stereotype is applied and a feature tag set can represent some parts and nest other components. One of the samples that shows such purpose is the *test_nested_UI_panels.mdzip* sample, which is located in the *samples/simulation/tests* folder of the MagicDraw installed directory.

The following System Class diagram shows the structures of Class system and Class monitor



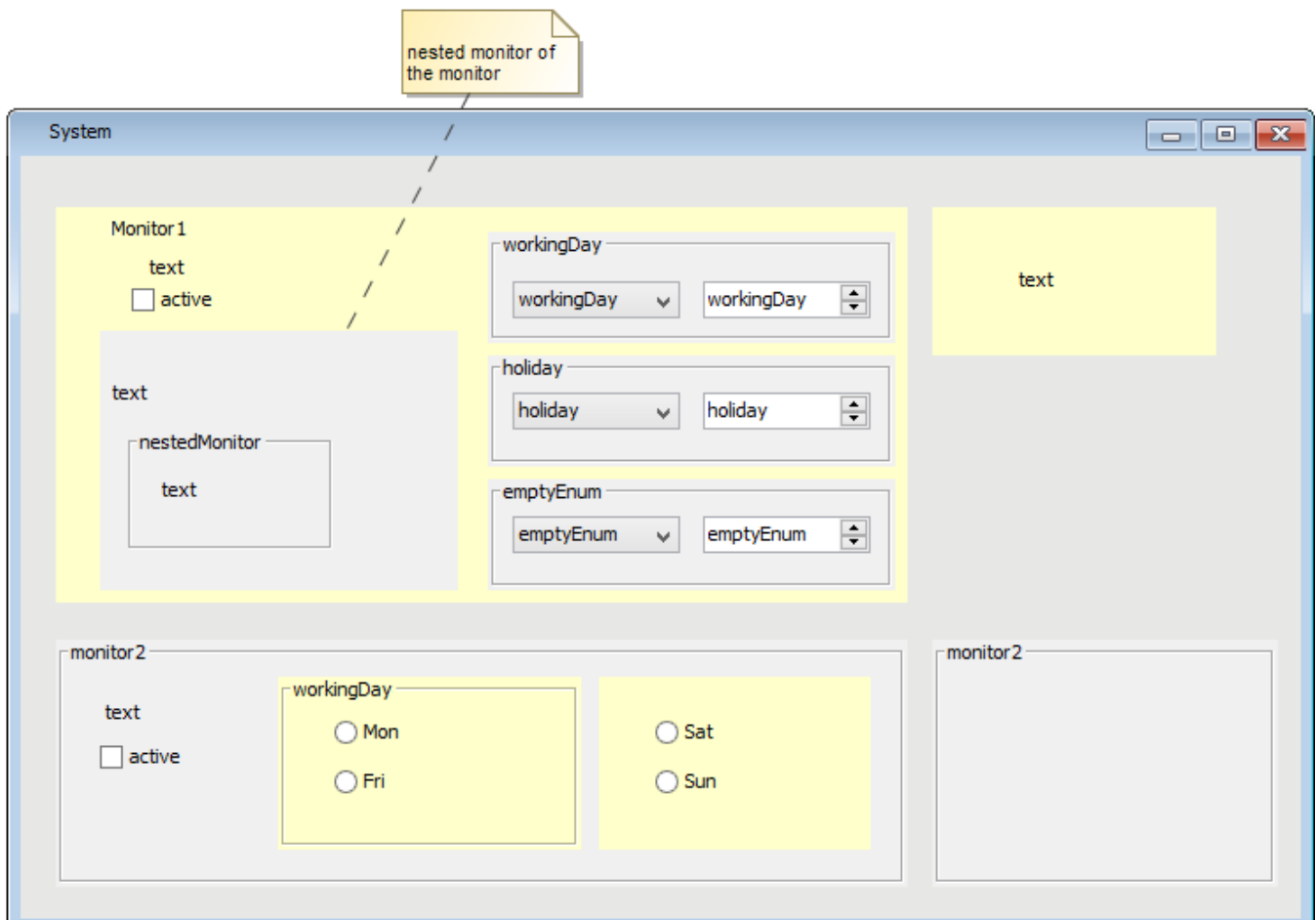
Structures of Class system and Class monitor.

On the same Class diagram, there are Instance Specifications of Class wystem and Class monitor that will be used in the simulation as follows



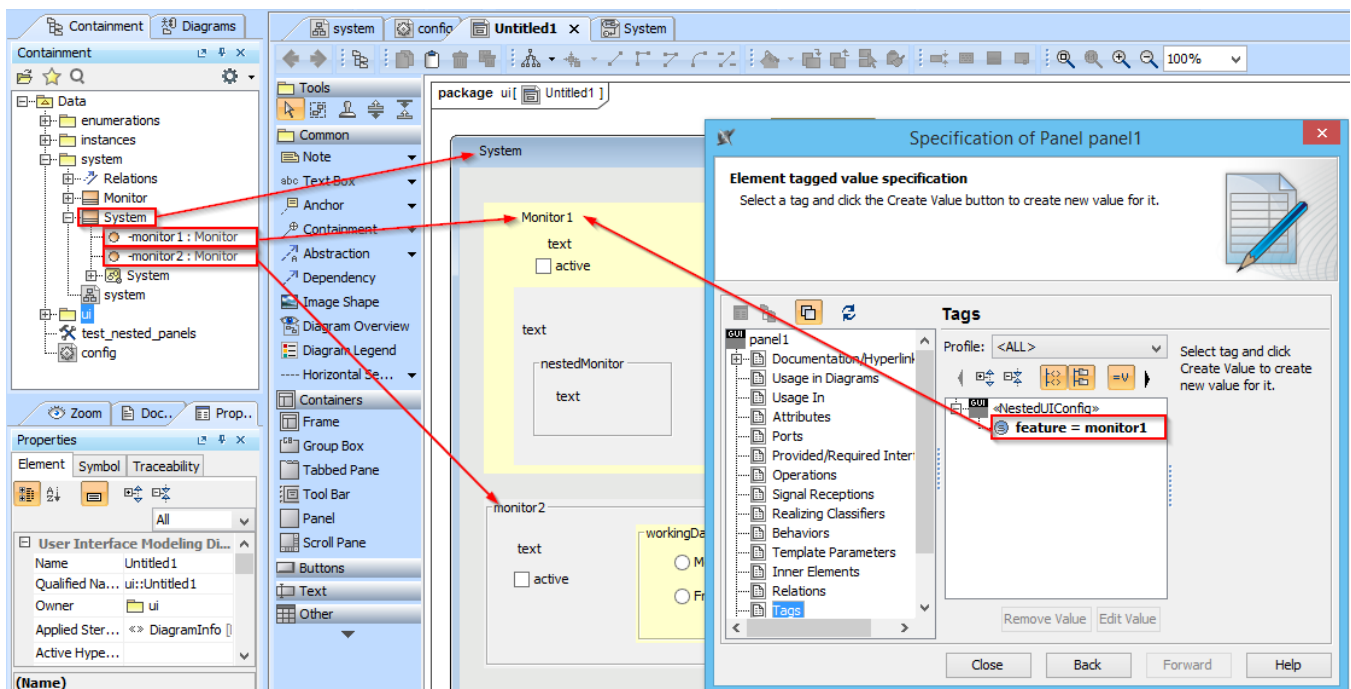
Instance Specifications of Class system and Class monitor.

The User Interface Modeling diagram displays the UI configuration that will be used in the simulation as follows



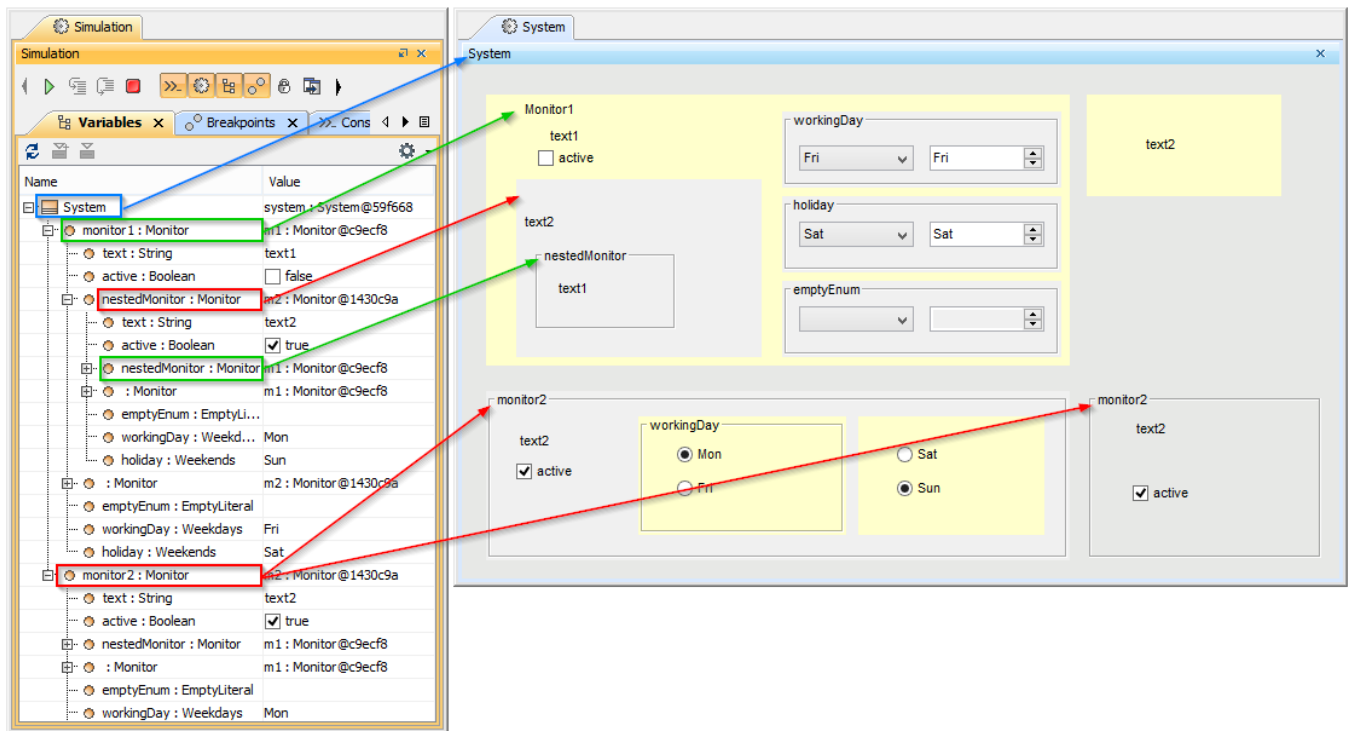
UI Configuration of Class system.

The following figure displays the UI configuration and the Specification of the UI Panel named panel1, which represents the monitor1 Property, as a part of Class system



UI Configuration and its Specification.

When the **test_nested_panels** SimulationConfig is run, the UI mockup will be displayed. The following figure exhibits the UI Panels and UI Group Boxes that represent the parts (Properties) of the Class system and in-depth nested parts as well



The Simulation Variables panel and Runtime UI Mockup.