

# Exporting runtime objects to InstanceSpecifications

You can export the values of a runtime object through the **Variables** pane to the following Specifications

- a new InstanceSpecification.
- an existing InstanceSpecification.
- the InstanceSpecification that created the runtime object. Once exported, the values of a runtime object will be set to the slots of the InstanceSpecification.

The type of InstanceSpecification you want to export the values of a runtime object to, depends on the element you used to create the runtime object. If the element is a Classifier, you can export the values of the runtime object to either of the following

- A new InstanceSpecification.
- An existing InstanceSpecification.

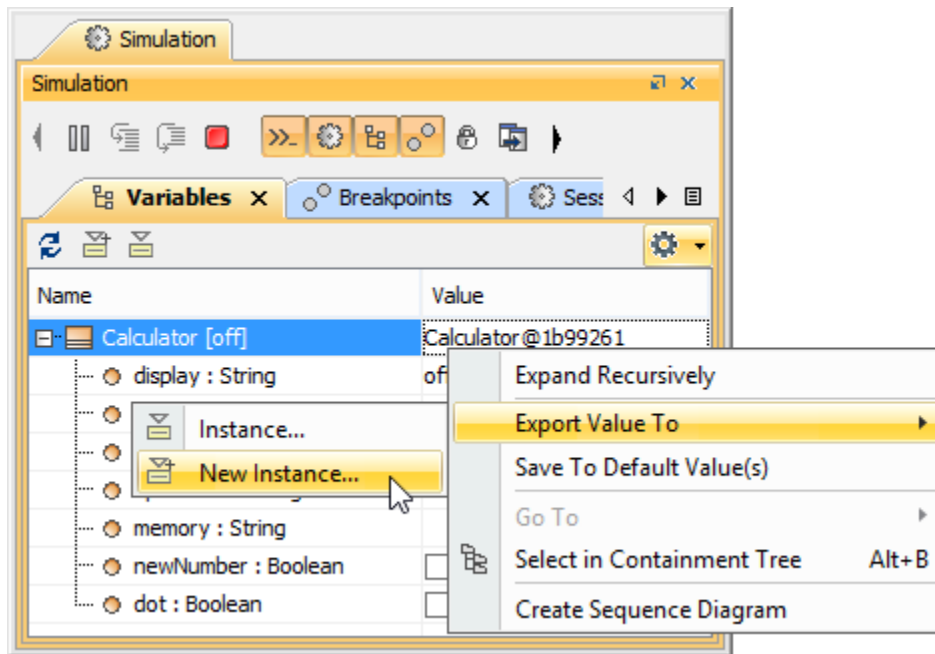
If the element is an InstanceSpecification, you can export the values of the runtime object to either of the following

- A new InstanceSpecification.
- The same InstanceSpecification that you used to create that runtime object.

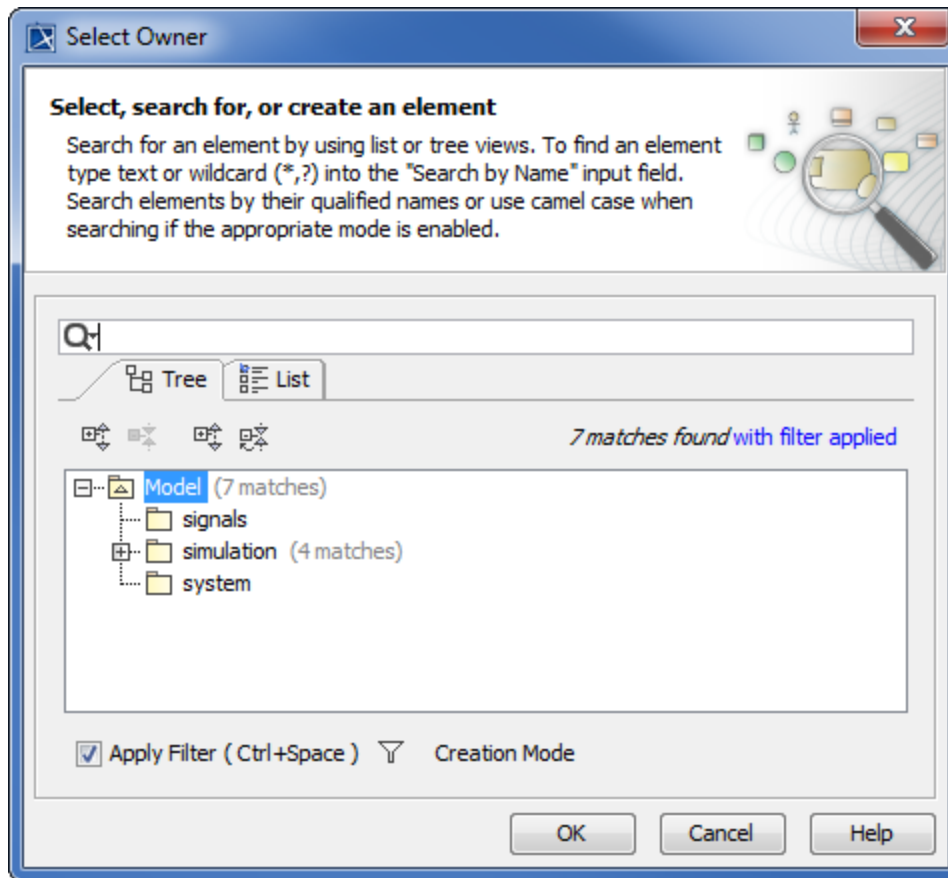
To export a runtime value to a new InstanceSpecification

1. Do either of the following

- Click a runtime object whose value you want to export in the **Name** column and click the **Export to New Instance** icon on the **Variables** pane toolbar.
- Right-click the row and select **Export Value To > New Instance**



2. The **Select Owner** dialog will open. Select the owner of the new InstanceSpecification (the system folder).

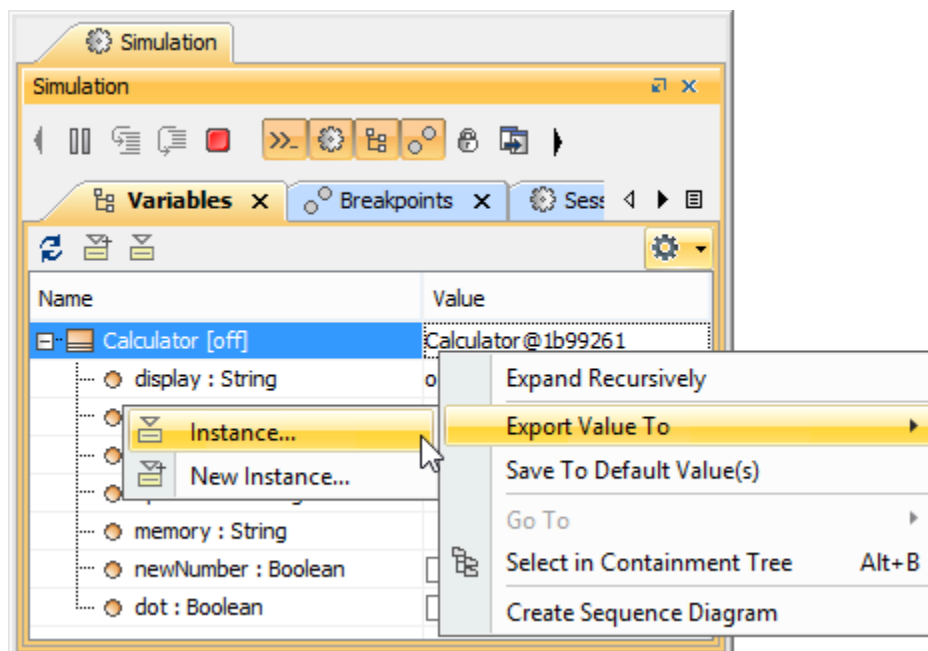


3. Click **OK**.

To export a runtime value to an existing InstanceSpecification

1. Do either of the following

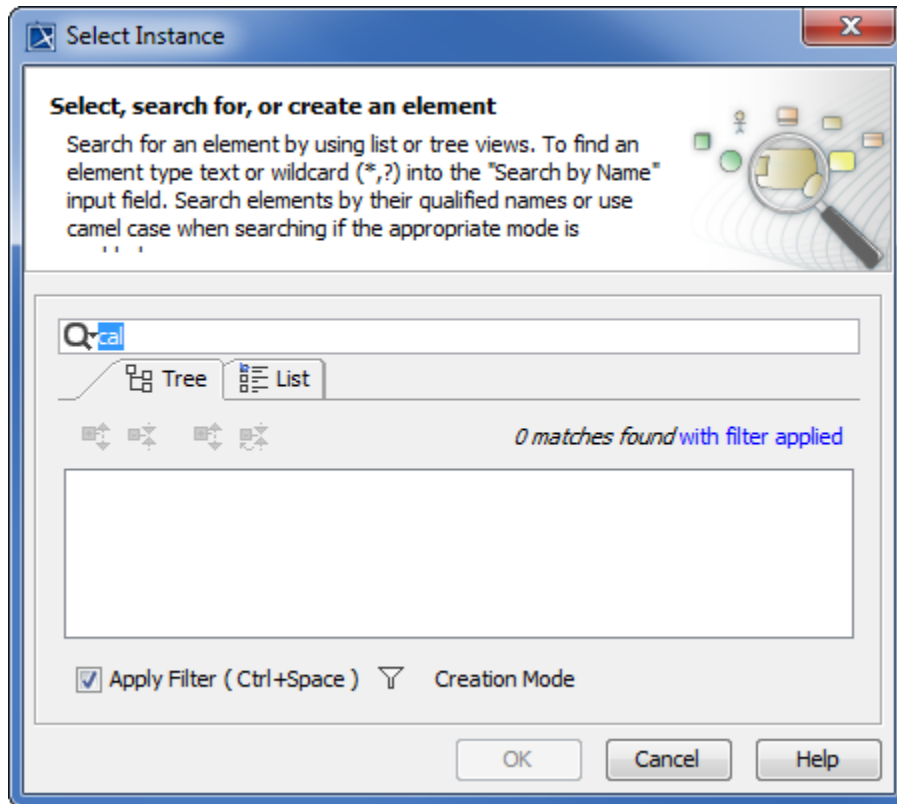
- Click a runtime object whose value you want to export in the **Name** column and click the **Export to Instance** icon on the **Variables** pane toolbar.
- Right-click the row and select **Export Value To > Instance**.



**Note**

To export the value of a runtime object using this method, the runtime object must be created from a Classifier.

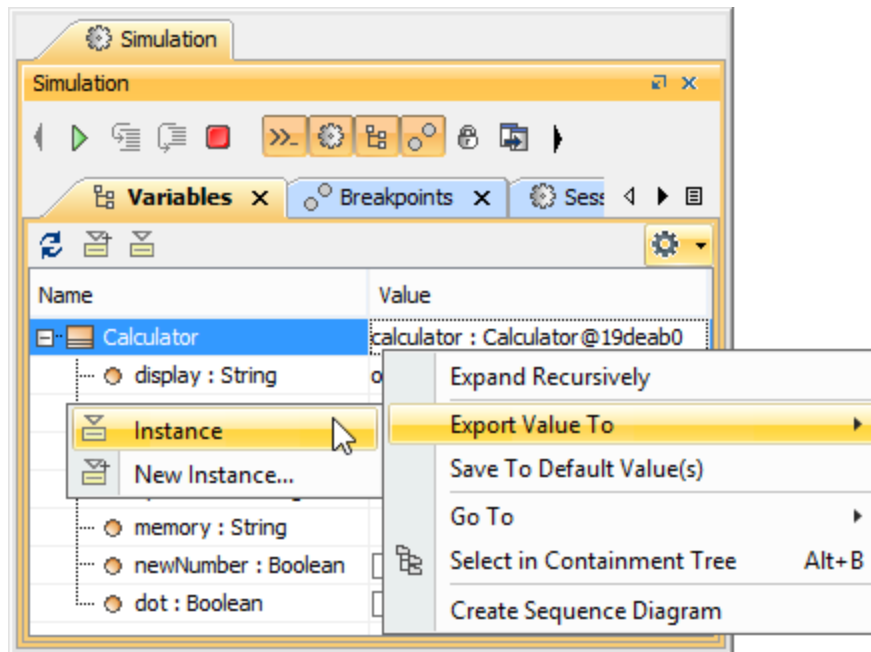
2. The **Select Instance** dialog will open. Select an InstanceSpecification that will be used to save the runtime object (You can select only the InstanceSpecification whose classifier is the same as that of the runtime object).



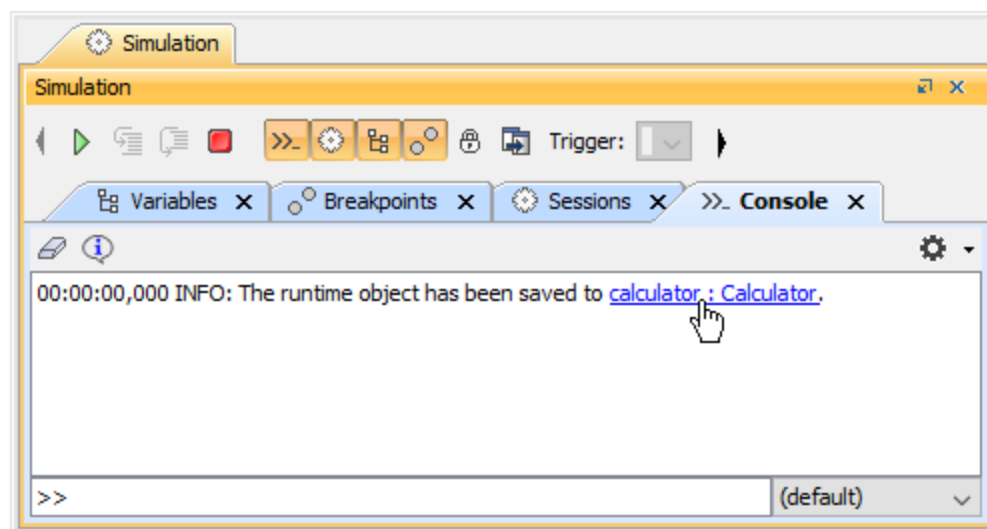
3. Click **OK**.

To export a runtime value to the InstanceSpecification that has created the runtime object

1. Do either of the following
  - Click a runtime object whose value you want to export in the **Name** column and click the **Export to Instance** icon on the **Variables** pane toolbar.
  - Right-click the row and select **Export Value To > Instance**.



2. Once Cameo Simulation Toolkit exported and saved the values of the runtime object to the Instance Specification that created it, you can see the hyperlink to that particular Instance Specification in the **Simulation Console** pane.



3. Click the hyperlink, and you will see the exact Instance Specification in the Containment tree.

This method allows you to export the value of the runtime object to the slots of the Instance Specification that has created the object. You can see the notification of each successful export and a location hyperlink, if any, in the **Simulation Console** pane.

**Note**  
To export the value of a runtime object using this method, the runtime object must be created from an Instance Specification.

#### Related page

- [Instance Specification](#)
- [Simulation console](#)
- [Variables pane](#)