

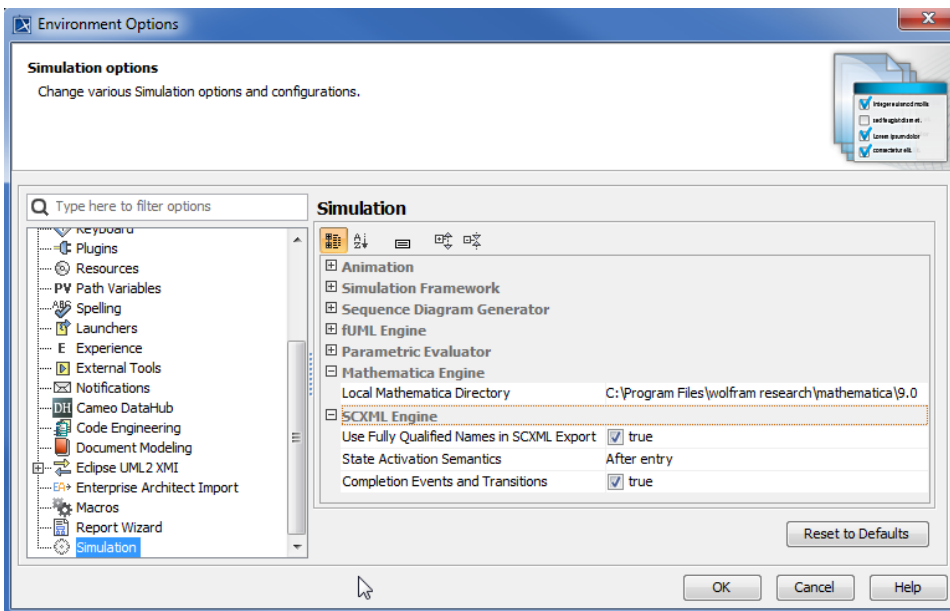
Integration with Mathematica

Cameo Simulation Toolkit supports Mathematica®, a Mathematica® computation engine, to analyze and solve Mathematica® expressions. Once you have installed Mathematica®, you can specify it as the language of opaque expressions.

First, you must install Mathematica® on your local machine, and then set up your system to allow Cameo Simulation Toolkit to use the installed Mathematica®.

To use Mathematica® on a 32-bit or a 64-bit version of Microsoft Windows and Linux

1. Select **Options > Environment** on the main menu. The **Environment Options** dialog opens.
2. Select **Simulation** on the left-hand side pane.
3. Set the **Local Mathematica® Directory** field to the location of the directory to which your Mathematica® was installed.
4. Restart MagicDraw.



To use Mathematica® on Mac OSX

1. Install Mathematica® and Cameo Simulation Toolkit.
2. Restart MagicDraw twice. It is now ready for you to use.