

Customizing animation colors

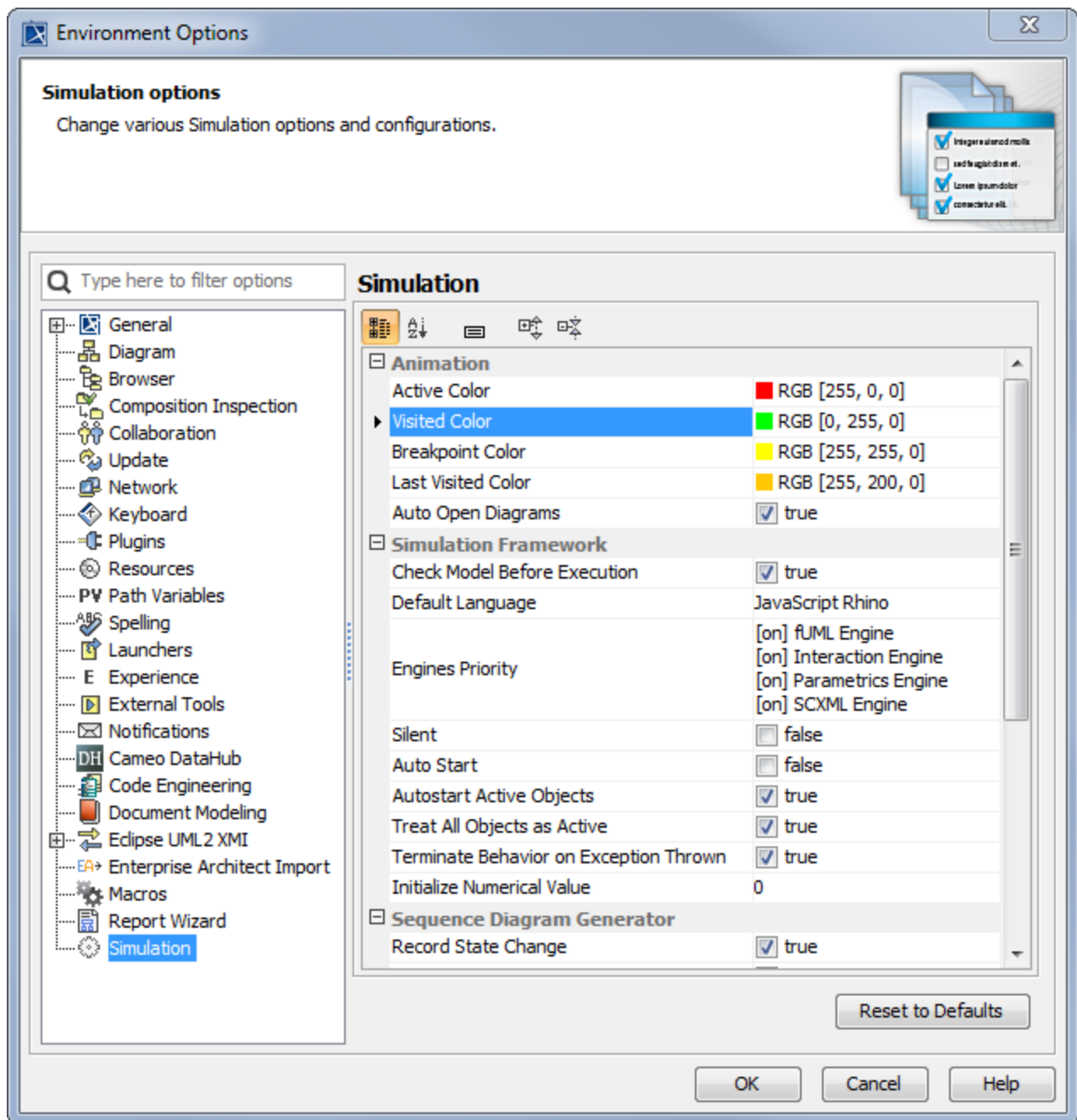
There are four kinds of annotated elements in a model simulation: (i) Active, (ii) Visited, (iii) Breakpoint, and (iv) Last Visited elements. By default, active elements will be annotated with red, visited elements with green, last visited elements with orange, and breakpoints with yellow. Cameo Simulation Toolkit allows you to customize the colors of these annotated elements through the **Environment Options** dialog.

To open the **Environment Options** dialog

- Click **Options > Environment** on the MagicDraw main menu.

To customize animation colors

1. Open the **Environment Options** dialog.
2. Select **Simulation** on the left-hand side.
3. Customize the colors of the active Elements, visited Elements, breakpoints, and last visited elements.



Customizing animation colors in the Environment Options dialog.

Related page

- [Environment Options](#)