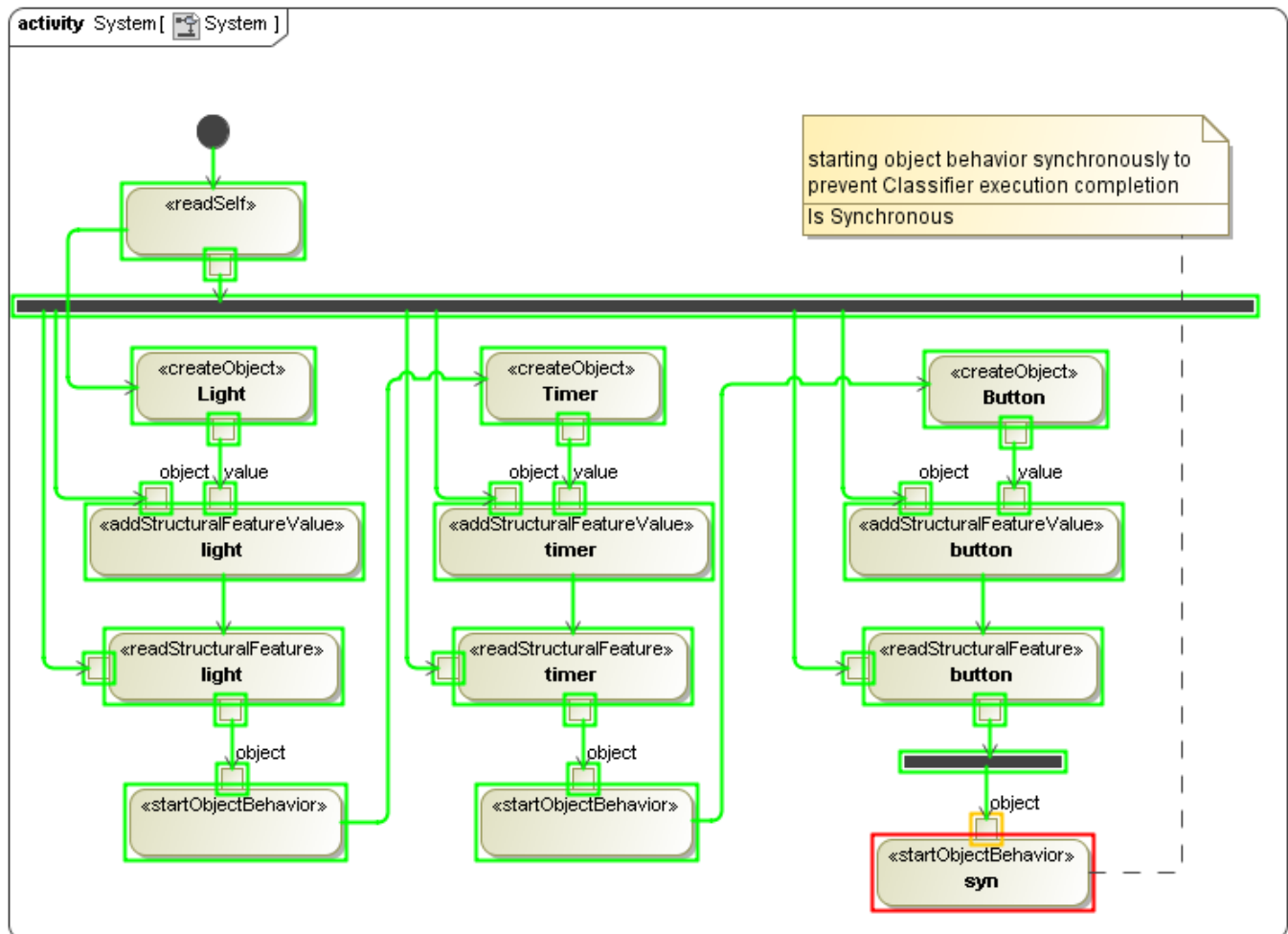


# Active, visited, and last visited elements

Active Elements are the Elements a simulation session is focusing on (see [Understanding simulation sessions](#) for more information). They can also be considered as the Elements that are currently being simulated in a simulation session. They will be annotated in red by default. Once an active Element has been simulated, it will become a visited Element and will be annotated in green by default. The last visited element will be annotated in orange.



Elements animation: active Element in red, last visited Element in orange, and visited Elements in green.

## Related page

- [Understanding simulation sessions](#)