

Missing data in diagrams, matrices, tables, and relation maps

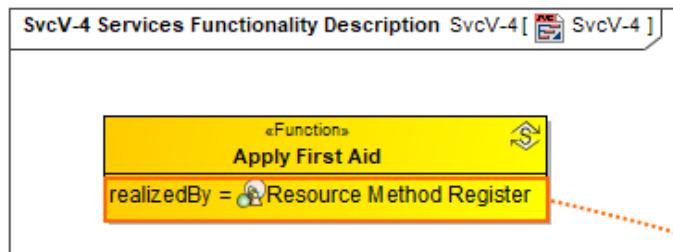
Since UPDM 2 profile [elements were removed](#), the Element Type of matrices, tables, and relation maps becomes empty after the migration. The same goes for the customized elements derived from the removed UPDM2 elements. If the UPDM2 [element is migrated](#) to the UAF element, the UAF element is set as an Element Type (criteria).



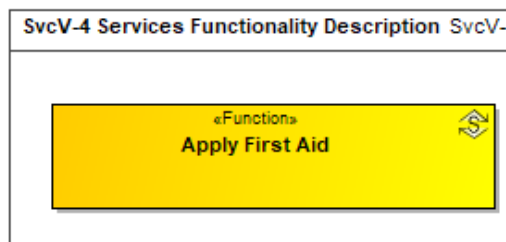
Exception

If Operational Event Trace, Resource Event Trace, Service Interaction was set as an Element Type criteria, after the migration an Interaction replaces those elements.

After the migration from UPDM 2 to UAF, some tags are no longer supported. During the migration process, all the information from those tags is moved to the **To Do** property of the tag owner. To find this property, open the appropriate element's Specification window. You can display the tag information in the note, anchored to the element.



Earlier versions



After migration to UAF in 19.0 version

The screenshot shows the 'Specification of Function Apply First Aid' window. The window has a title bar 'Specification of Function Apply First Aid'. Below the title bar, there is a section 'Specification of Function properties' with a description: 'Specify properties of the selected Function in the properties specification table. Choose the Expert or All options from the Properties drop-down list to see more properties.' To the right of this section is a document icon with a pencil. Below this is a table with the following content:

Apply First Aid	
Node	Reported Condition : Systems Viewpc
Image	
To Do	UAF: Realized By = Resource Method Resource Method Register
Name	The name of the NamedElement.

At the bottom of the window, there is a search bar with the text 'Type here to filter properties' and buttons for 'Close', 'Back', 'Forward', and 'Help'.