

Creating SvcV-8 diagram

To create a SvcV-8 diagram

- 1 [Create new Version Of Configuration](#)
- 2 [Define the resource for the Version Of Configuration](#)
- 3 [Specify Actual Project Milestones of the resource](#)

Create new Version Of Configuration

To create new Version Of Configuration in SV-8 diagram

1. Click the **Add New** button and select Version of Configuration.
2. Type the name of the newly created Version of Configuration.

Define the resource for the Version Of Configuration

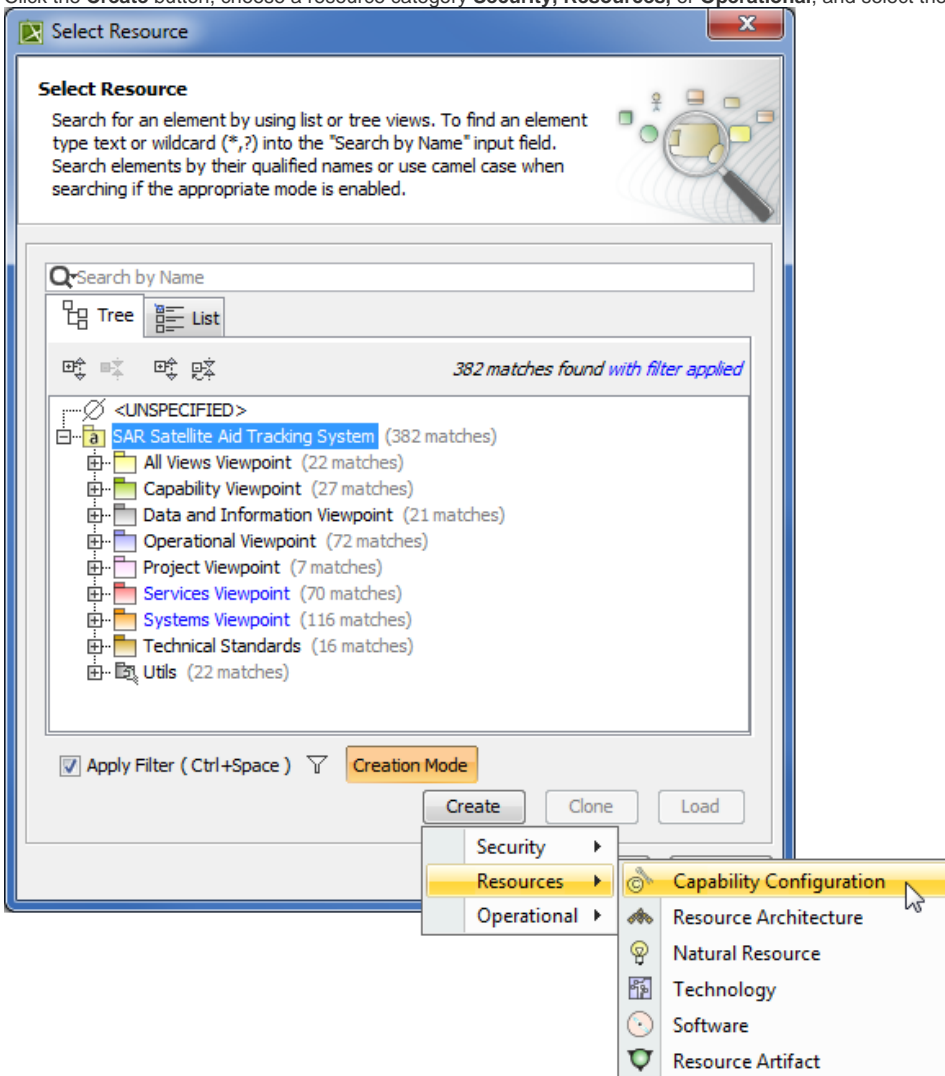
To define the resource for the Version Of Configuration

1. Right-click the Version Of Configuration in the diagram pane and select **Resource**.
2. In the **Select Resource** dialog do one of the following:
 - Select an existing resource that has milestones defined.
 - Create new resource (described in the following procedure).

To create new resource for the Version Of Configuration

1. In the **Select Resource** dialog switch on the **Creation Mode**.
2. Select package where you want to create a resource.

- Click the **Create** button, choose a resource category **Security**, **Resources**, or **Operational**, and select the desired resource.




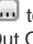
- In the Specification window of the newly created resource, type its name.

Specify Actual Project Milestones of the resource

 Each resource must have two Actual Project Milestone properties defined:

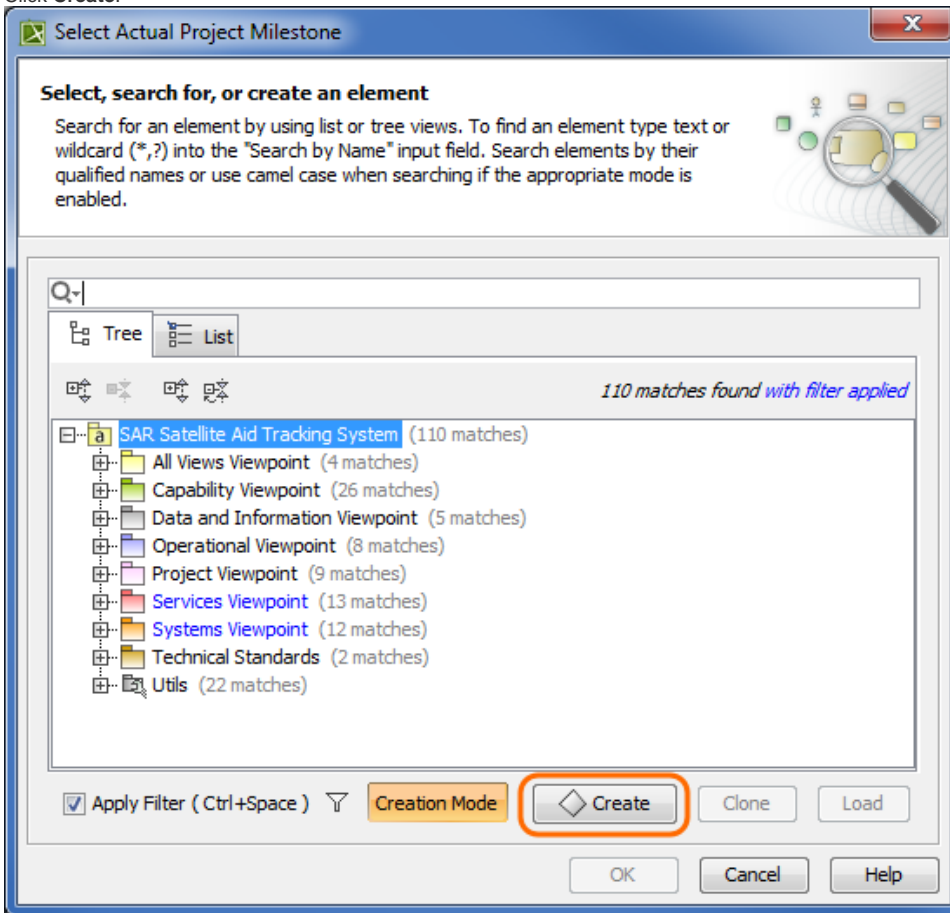
- Version Released At Milestone (defines the start of a period, Kind - InService).
- Version Withdrawn At Milestone (defines the end of a period, Kind - OutOfService).


To specify Actual Project Milestones of the resource

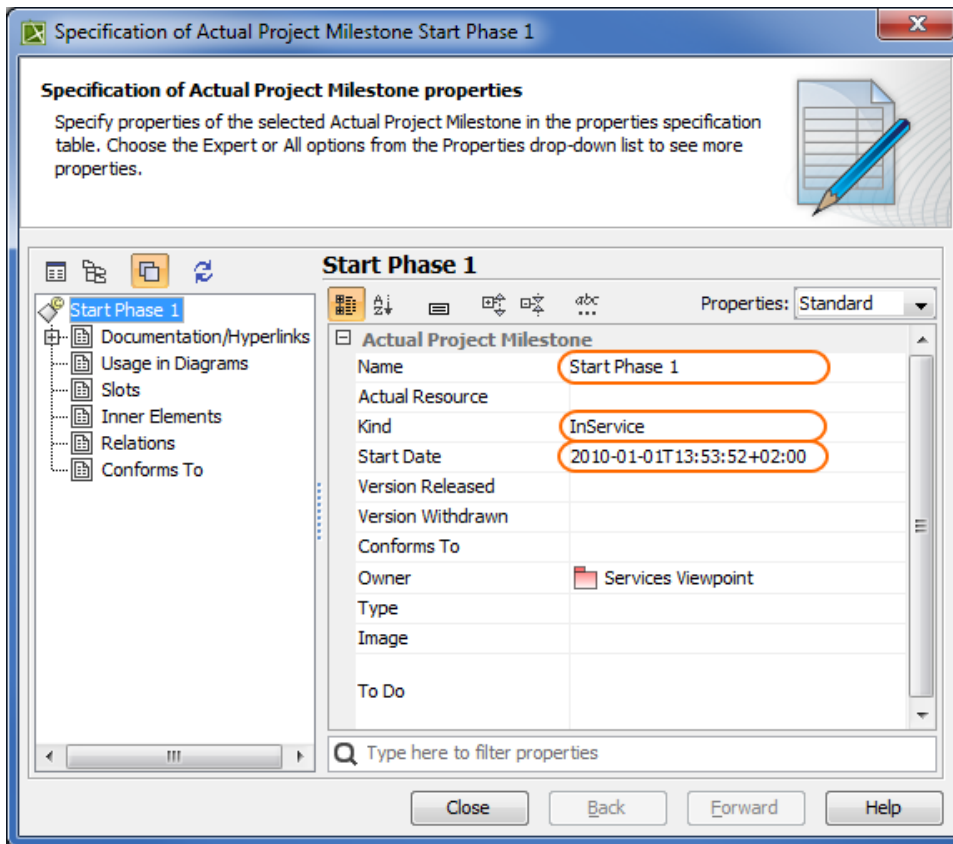
- In the Specification window of the newly created resource, specify:
 - the **Version Released At Milestone** property. Click  to open the **Select Actual Project Milestone** dialog and do one of the following:
 - Select an existing milestone defined with kind In Service.
 - Create new milestone (described in the following procedure "[To create new milestone with kind In Service](#)").
 - the **Version Withdrawn At Milestone** property. Click  to open the **Select Actual Project Milestone** dialog and do one of the following:
 - Select an existing milestone defined with kind Out Of Service.
 - Create new milestone (described in the following procedure "[To create new milestone with kind Out Of Service](#)").
- Click **Close > OK**.
The Actual Project Milestone is specified.

To create new milestone with kind In Service

1. In the **Select Actual Project Milestone** dialog, switch on the **Creation Mode**.
2. Select package where you want to create an Actual Project Milestone.
3. Click **Create**.



4. In the Specification window of the newly created Actual Project Milestone specify three properties:
 - a. Name. Type a name of the Actual Project Milestone.
 - b. Start Date. Define the start of a period. Select the Date property value cell and click . In the **Date and Time Settings** dialog choose a date and click **OK**.
 - c. Kind. Select the Kind property value cell and choose a milestone kind: In Service.

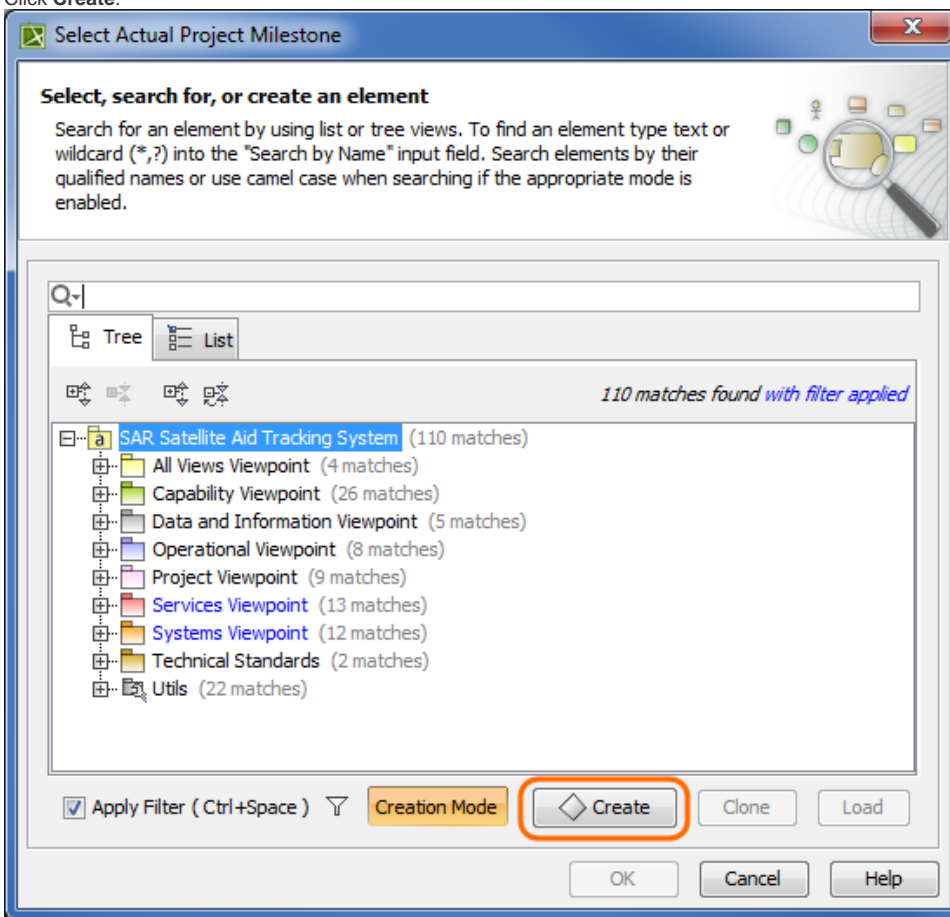



5. Click **Close** > **OK**.

To create new milestone with kind Out Of Service

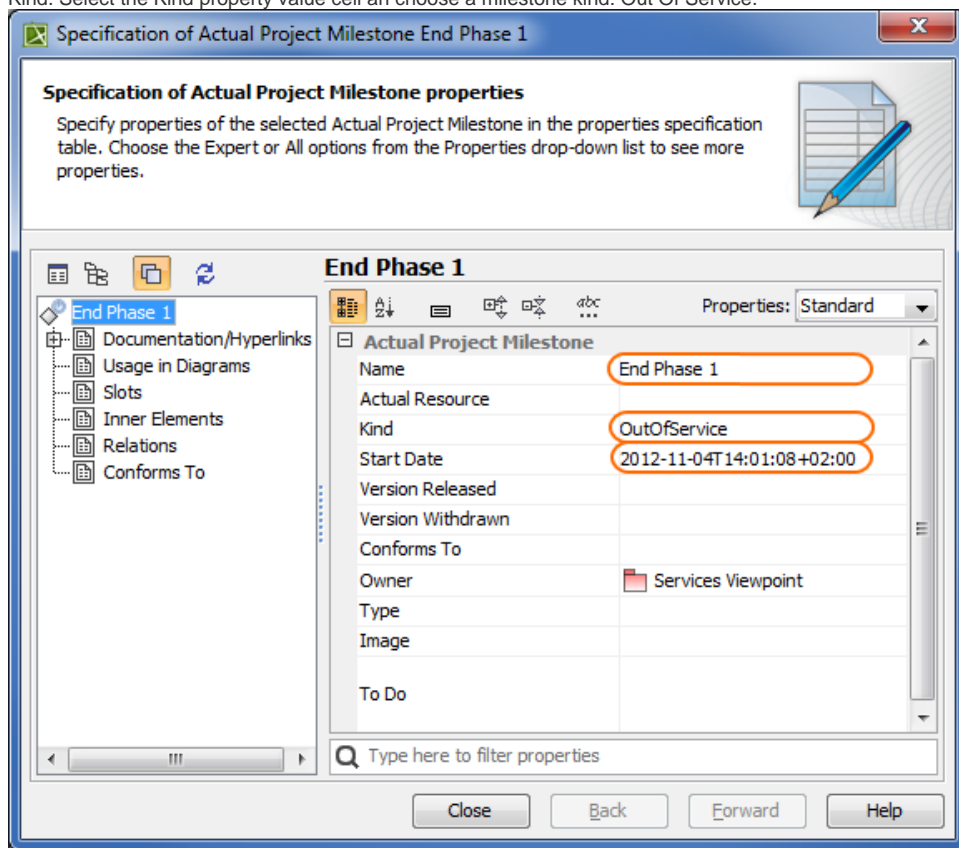
1. In the **Select Actual Project Milestone** dialog, switch on the **Creation Mode**.
2. Select package where you want to create an Actual Project Milestone.

3. Click **Create**.



4. In the Specification window of the newly created Actual Project Milestone specify three properties:
- Name. Type a name of the Actual Project Milestone.
 - Start Date. Define the end of a period. Select the Date property value cell and click . In the [Date and Time Settings dialog](#) choose a date and click **OK**.

- c. Kind. Select the Kind property value cell and choose a milestone kind: Out Of Service.

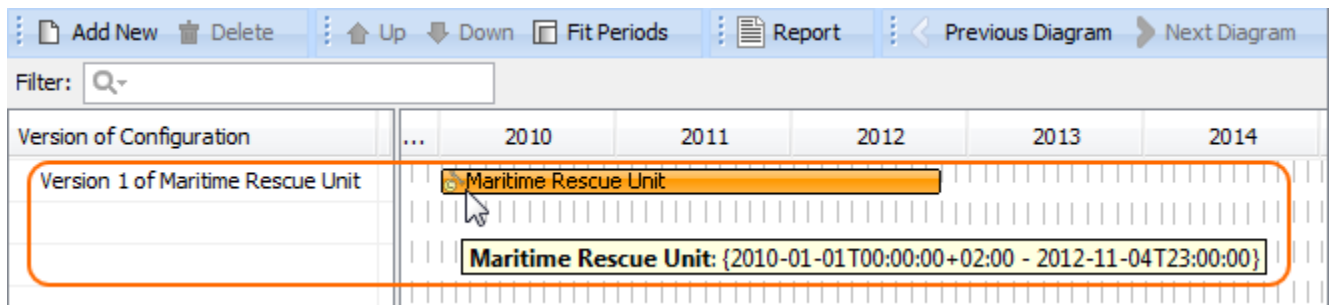


The dialog box is titled "Specification of Actual Project Milestone End Phase 1". It contains a section for "End Phase 1" with a tree view on the left showing "Documentation/Hyperlinks", "Usage in Diagrams", "Slots", "Inner Elements", "Relations", and "Conforms To". The main area displays the "Actual Project Milestone" properties table. The "Kind" property is set to "OutOfService" and the "Start Date" is "2012-11-04T14:01:08+02:00". The "Owner" is "Services Viewpoint".

End Phase 1	
Name	End Phase 1
Actual Resource	
Kind	OutOfService
Start Date	2012-11-04T14:01:08+02:00
Version Released	
Version Withdrawn	
Conforms To	
Owner	Services Viewpoint
Type	
Image	
To Do	

5. Click **Close** > **OK**.

The result of this procedure is as the following figure.



The table shows the configuration for the Maritime Rescue Unit. The "Version of Configuration" column lists "Version 1 of Maritime Rescue Unit". The "Maritime Rescue Unit" column shows a timeline from 2010 to 2014. The timeline is highlighted with an orange box, and the date range is shown as "Maritime Rescue Unit: {2010-01-01T00:00:00+02:00 - 2012-11-04T23:00:00}".

Version of Configuration	...	2010	2011	2012	2013	2014
Version 1 of Maritime Rescue Unit		Maritime Rescue Unit: {2010-01-01T00:00:00+02:00 - 2012-11-04T23:00:00}				