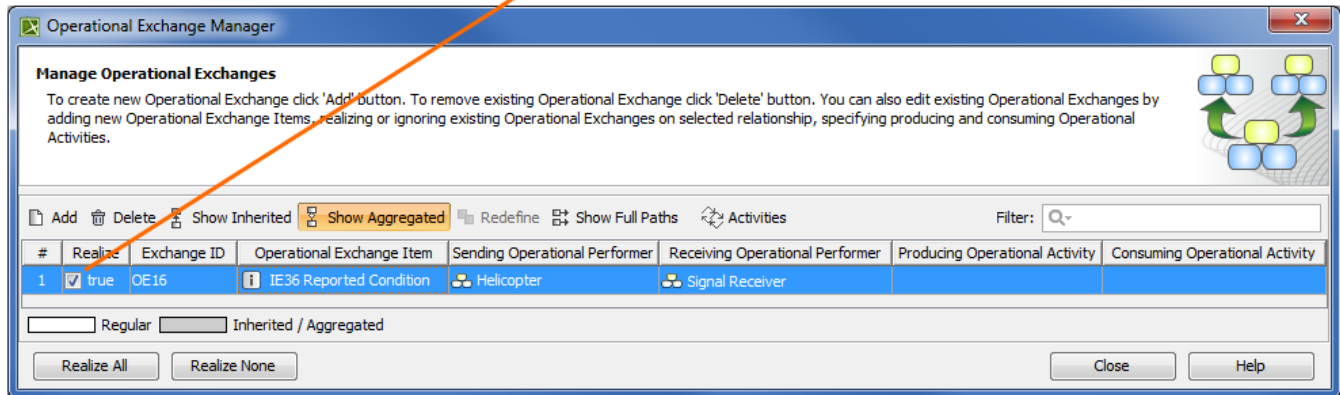
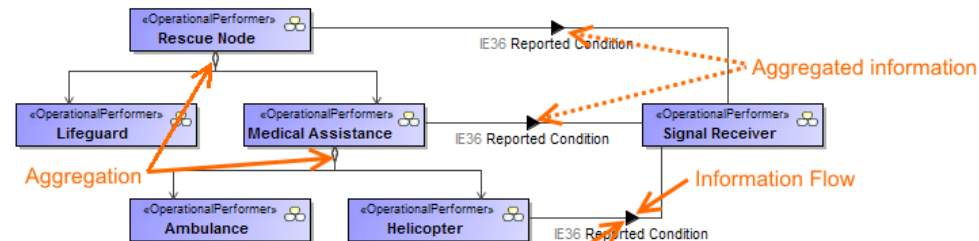


Inheritance, Aggregation, Composition, and Redefinition of Exchanges

The Operational Exchanges and Resource Exchanges can be inherited, aggregated, or composed. You can redefine the inherited flows.

You can see the inherited, aggregated, and composed exchanges in:


- [Operational Exchange Manager](#) dialog
- [Resource Exchange Manager](#) dialog
- Role-based tables [OV-3](#), [NOV-3](#), [SV-6](#), [NSV-6](#), [L3](#), and [P3](#).

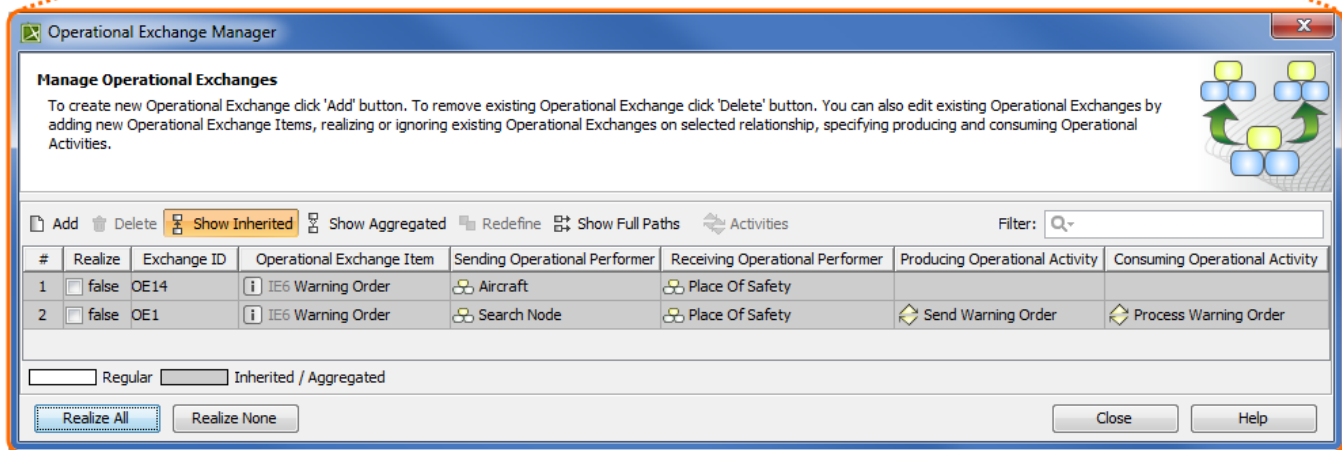
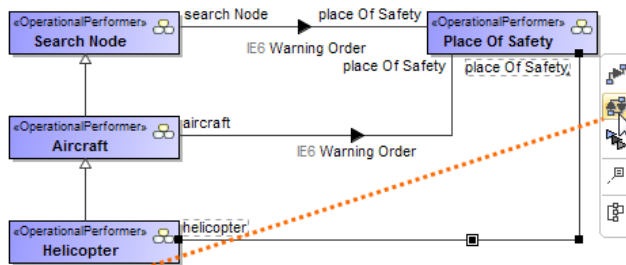


Case Study

Let's say, we have Operational Performers *Search Node* and *Place Of Safety* related with the Operational Exchange *Warning Order*. The Operational Performer *Aircraft* specifies Operational Performer *Search Node*. Then we draw an association between *Aircraft* and *Place Of Safety*. In this case, the drawn association inherits the Operational Exchange information that can be realized or not and also can be redefined.

Let's realize the Operational Exchange. We can do this in two ways:

- By clicking  in the association smart manipulator toolbar.
- By selecting the check box in the Realize column of the [Operational Exchange Manager](#) dialog.



i To hide inherited exchanges in dialogs

1. Click **Options > Project**.
2. In the **Project Options** dialog, select **General > UAF**.
3. Set the **Respect UAF Information Flows on Generalization** property value to *false*.

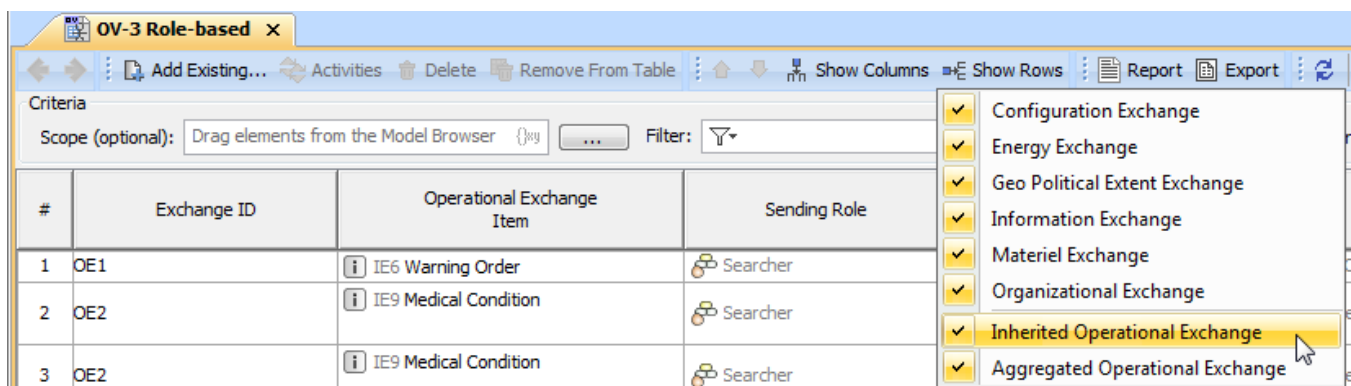


- The exchange is not created for the drawn association, it is only realized.
- The realization of the exchange will be removed from the association when Generalization or Exchange is removed.

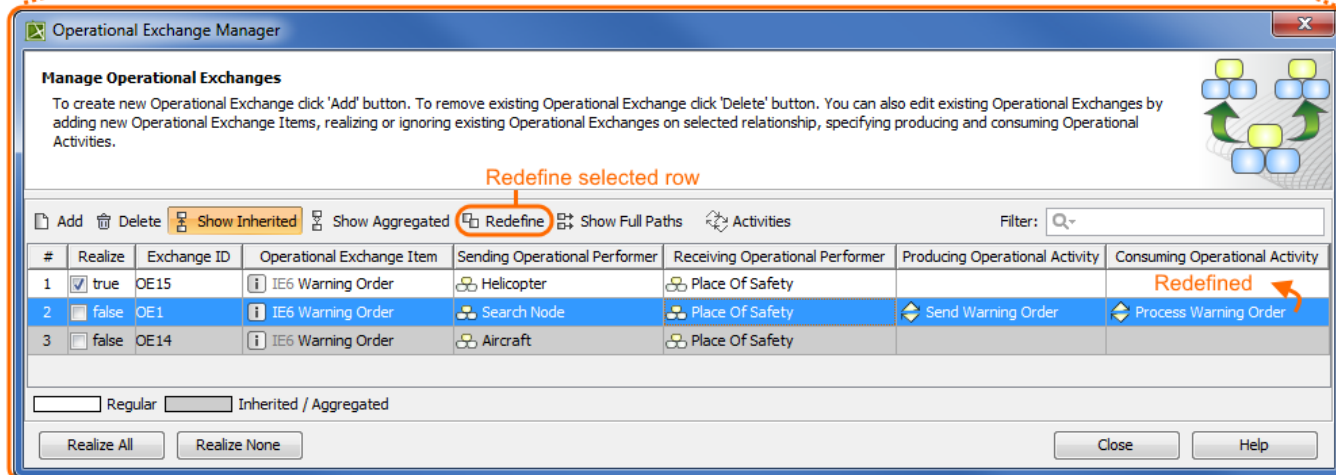
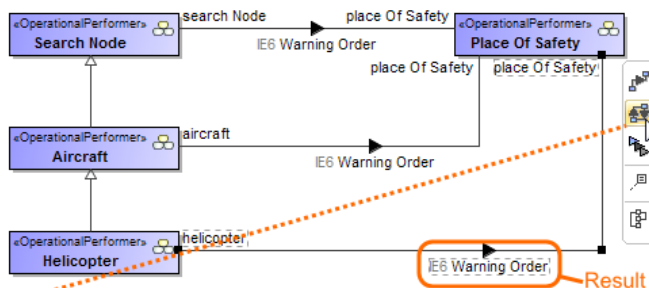
All the inherited exchanges can be also seen in the role-based tables. The inherited exchange rows are displayed in gray.

To see the inherited exchanges

1. On the table toolbar, select **Show Rows** and then click the **Inherited Operational Exchange** or **Resource Exchange** button.



When we have the inherited Operational Exchange, we can redefine it. This means, that the inherited Operational Exchange will be copied together with the information such as Actual Measurements, Conveyed Items, Documentation. The new Operational Exchange will be created in the model.



To redefine the Operational Exchange

1. In the **Operational Exchange Manager** dialog, select the inherited Operational Exchange and click the **Redefine** button. The new Operational Exchange is created.

i All the information that comes from the inherited exchange when redefining it can be modified in the model.